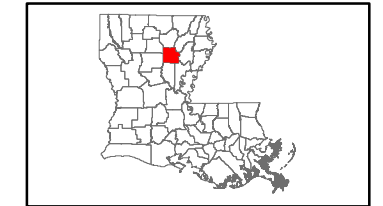


Exhibit K. Port of Columbia Site Electrical Transmission Infrastructure Map

Existing Electric Transmission
Port of Columbia Site
Caldwell Parish, LA

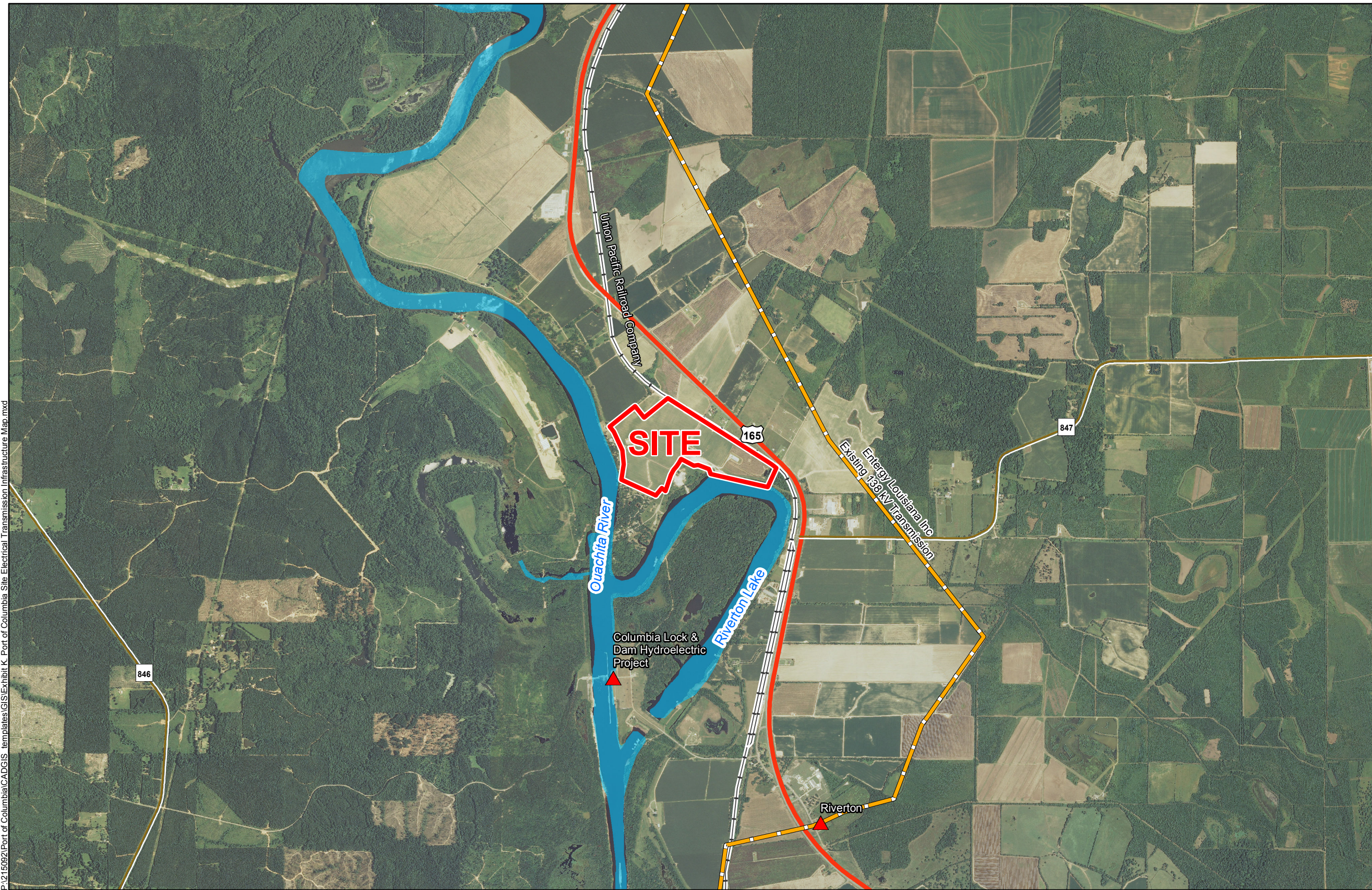
Columbia Port Commission



Caldwell Parish

LEGEND

- Site Boundary (171.37 Ac. +/-)
- Electric Transmission**
- Entergy - 138 kV
- ▲ Substation
- Existing Roadway**
- US Highway
- Rural State Highway
- Railroad
- Waterbody



P:\215092\Port of Columbia\CAD\GIS_templates\GIS\Exhibit K. Port of Columbia Site Electrical Transmission Infrastructure Map.mxd

- General Notes:
1. No attempt has been made by CSRS, Inc. to verify site boundary, title, actual legal ownership, deed restrictions, servitudes, easements, or other burdens on the property, other than that furnished by the client or his representative.
 2. Transportation data from 2013 TIGER datasets via U.S. Census Bureau at [ftp://ftp2.census.gov/geo/tiger/TIGER2013](http://ftp2.census.gov/geo/tiger/TIGER2013).
 3. Utility information from visual inspection and/or the individual utility operators. Exact field location has not been determined by survey. The lines shown are an approximate representation only and may have been offset for depiction purposes.
 4. 2013 aerial imagery from USDA-APFO National Agricultural Inventory Project (NAIP) and may not reflect current ground conditions.



NORTHEAST LOUISIANA
ECONOMIC ALLIANCE

NELEA

Date:	7/20/2015
Project Number:	215092
Drawn By:	AMB
Checked By:	JAY

CSRS
IMAGINE SHAPE DELIVER

6767 Perkins Road Suite 200 Baton Rouge, LA 70808
Telephone: 225 769-0546 Fax: 225 767-0060
www.csronline.com