

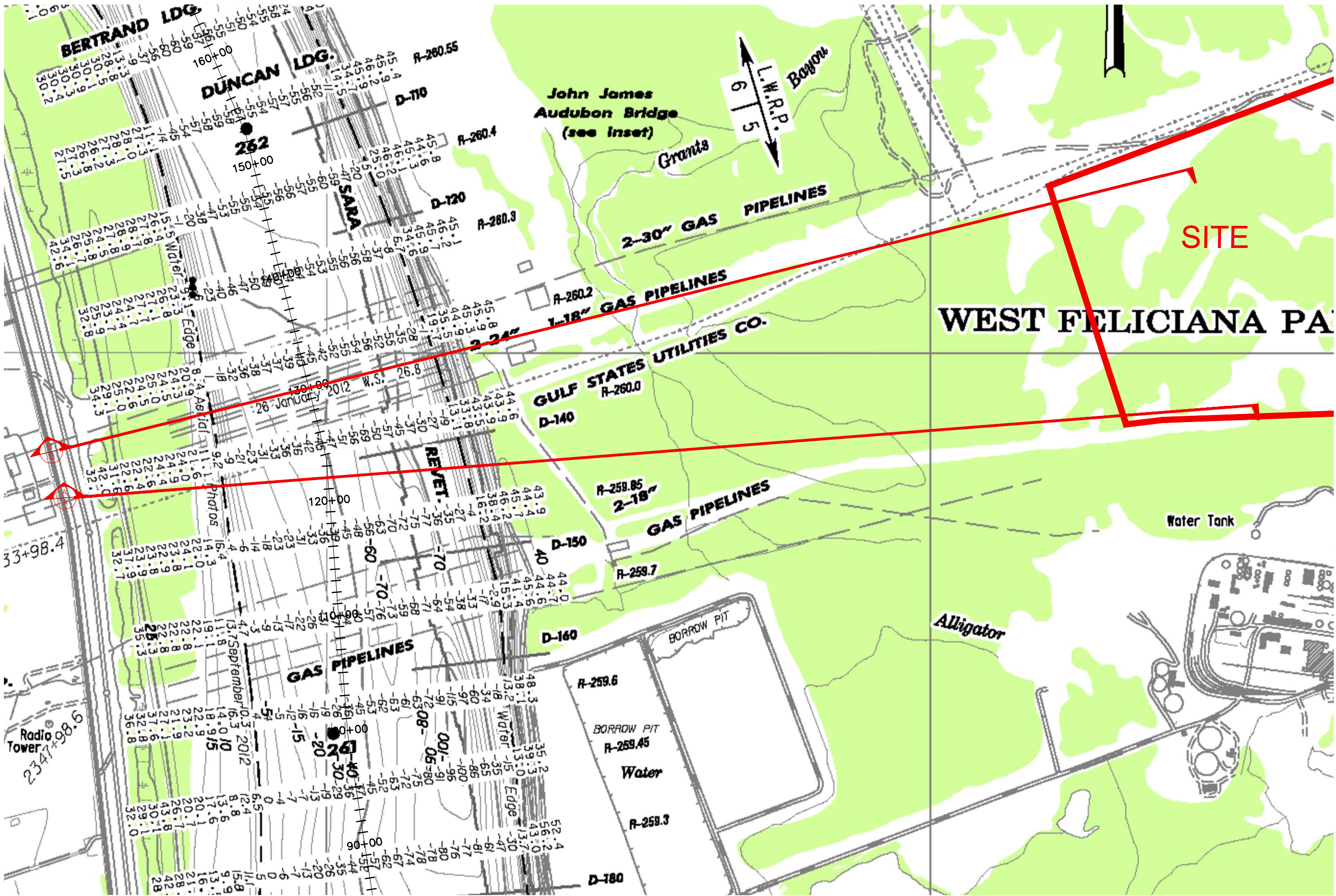
Exhibit JJ. West Feliciana Industrial Park  
Site USACE Hydrographic Survey  
Overlay and Cross Section Map





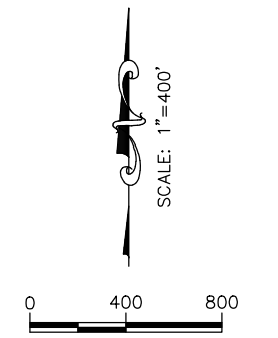
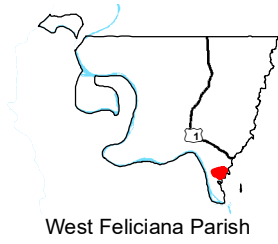
# West Feliciana Industrial Park Site USACE Hydrographic Survey Overlay and Cross Section Map

P:\212161\Sites Under Contract\019 - West Feliciana Industrial Park\CAD\GIS\_Templates\CAD\USACE Hydrographic Survey Overlay and Cross Section Maps.dwg May 08, 2017 - 9:25am



Project:  
**West Feliciana Industrial Park Site**  
 West Feliciana Parish

Client:  
**BRAC**  
 Baton Rouge Area Chamber.

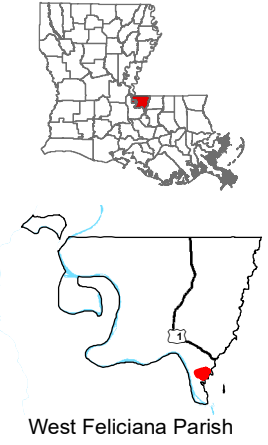
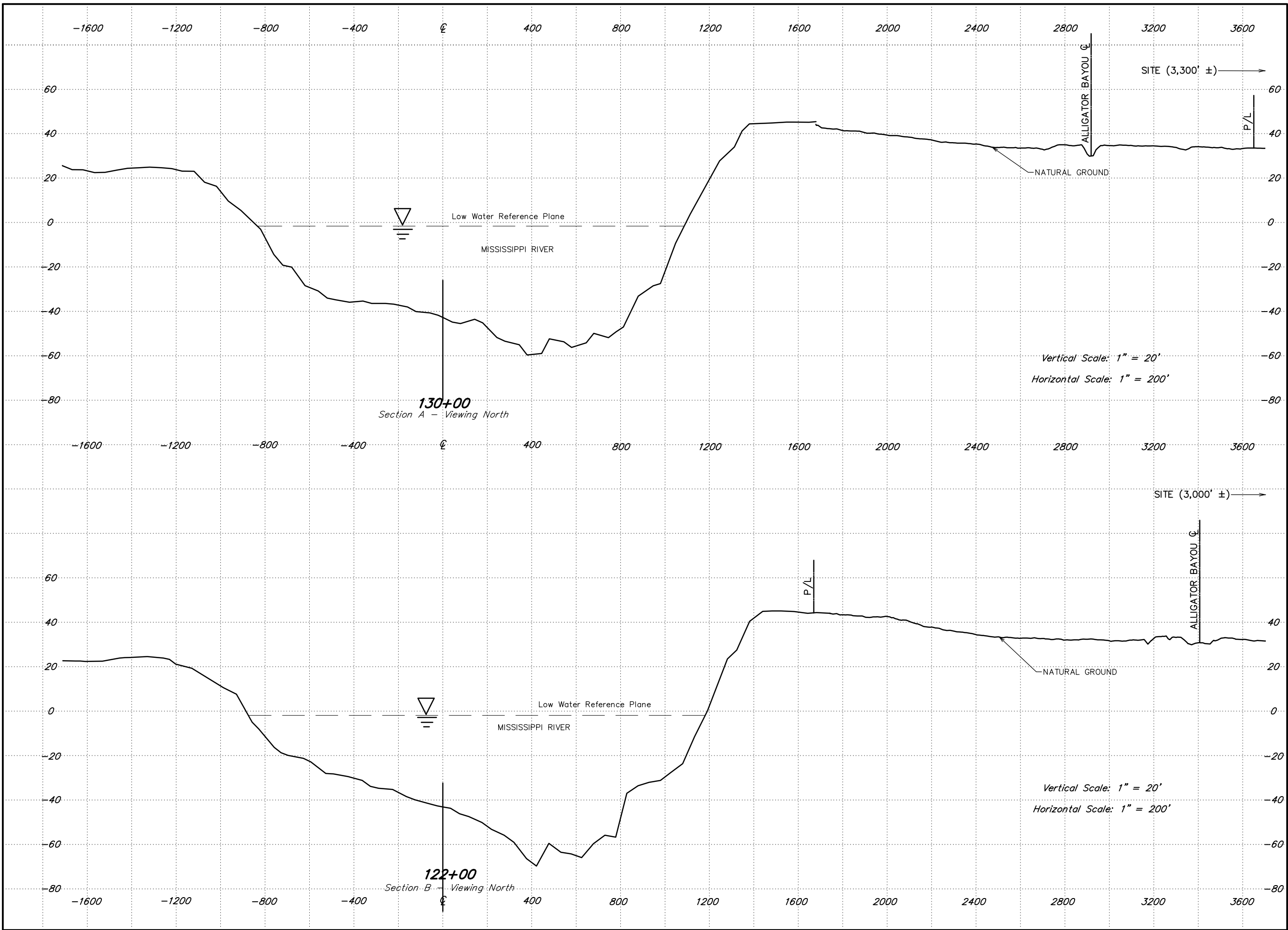


LEGEND  
 SITE BOUNDARY (547.31 Ac.)

Sheet Title:  
**Hydrographic Survey Overlay Exhibit**  
 Date: April 2017  
 Project Number: 212161  
 Drawn By: TMK  
 Checked By: JAY  
 Sheet:



P:\212161\Sites Under Contract\019 - West Feliciana Industrial Park\CAD\GIS\_templates\CAD\USACE Hydrographic Survey Overlay and Cross Section Maps.dwg May 12, 2017 - 9:39am



Revisions:

#	Date	Description

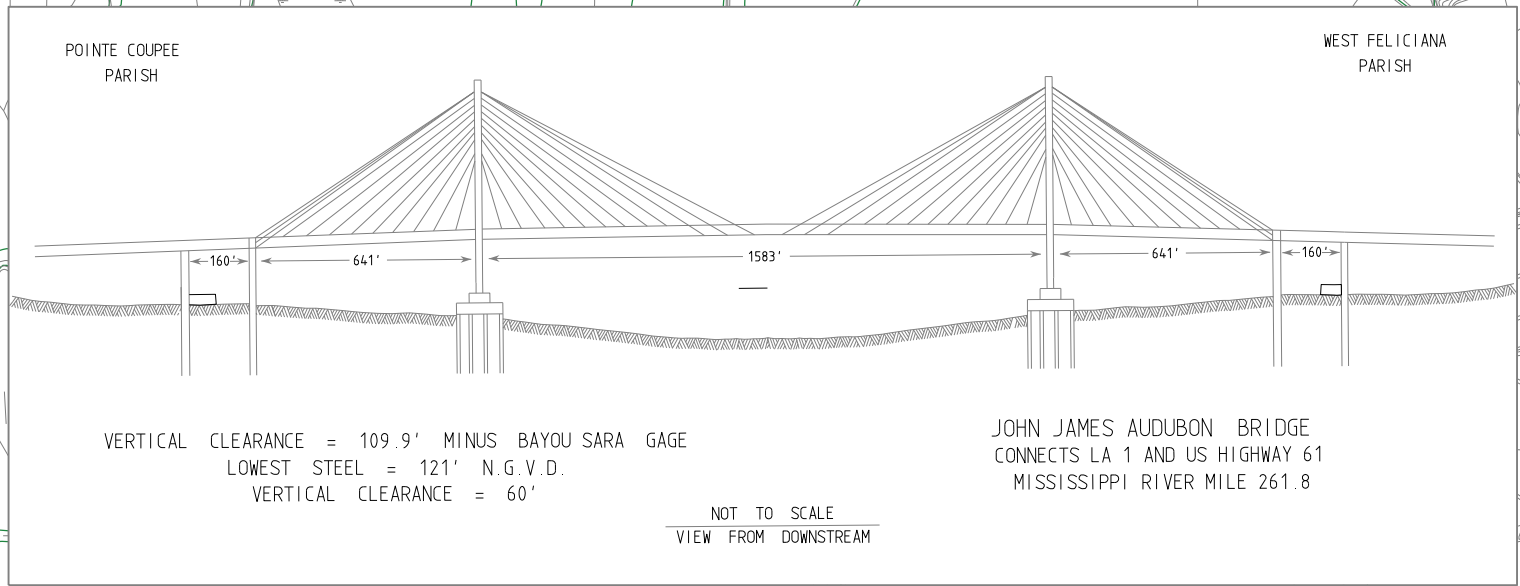
Key Plan:

Sheet Title:

**Cross Section Exhibit**

Date:	April 2017
Project Number:	212161
Drawn By:	TMK
Checked By:	JAY
Sheet:	

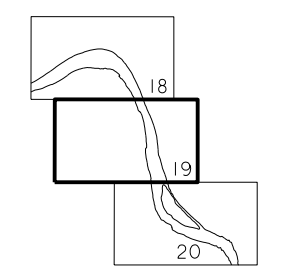
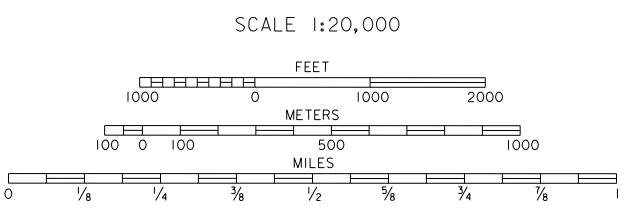




# West Feliciana Industrial Park Site USACE Hydrographic Survey Overlay and Cross Section Map



All elevations are expressed in feet and refer to North American Vertical Datum of 1988. Contours below Low Water Reference Plane are expressed in feet at 5 and 10 ft. intervals. Contours above Low Water Reference Plane are expressed in feet at 5 ft. intervals. Planimetry from aerial photographs from February 2002. Distances on Mississippi River above Head of Passes are shown at 1 mile intervals, 1962 survey. Projection ..... Lambert Conformal Conic Horizontal Datum ..... North American Datum 1983 (NAD 83) Ellipsoid ..... GRS 80 L.W.R.P. - Low Water Reference Plane.



MISSISSIPPI RIVER  
HYDROGRAPHIC SURVEY 2013  
BLACK HAWK, LA TO HEAD OF PASSES, LA  
ALSO SOUTHWEST, SOUTH, AND PASS A LOUTRE.  
IN 86 SHEETS  
U.S. ARMY ENGINEER DISTRICT, NEW ORLEANS,  
CORPS OF ENGINEERS