

Exhibit O.

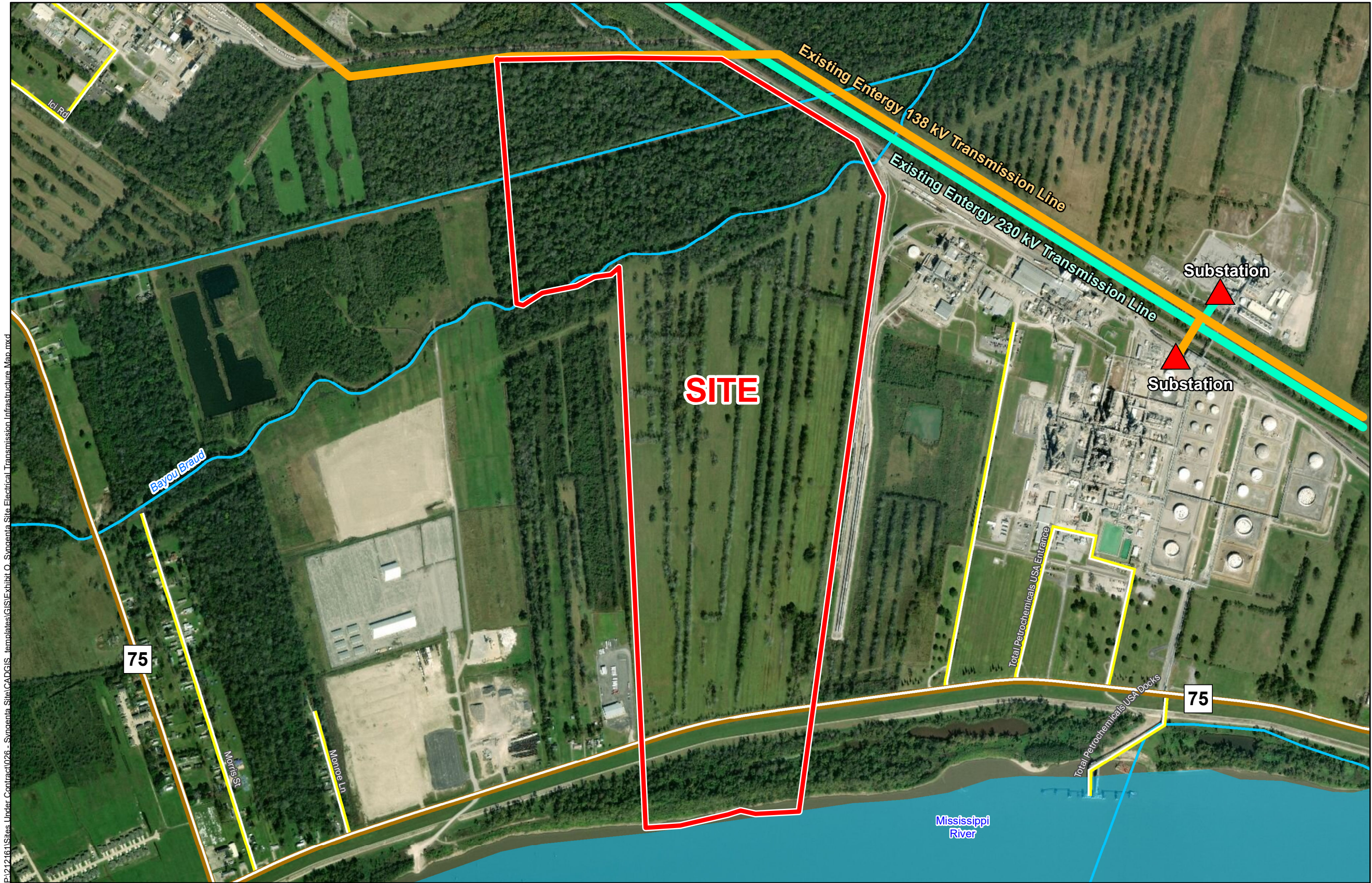
Syngenta Site

Electrical Transmission Infrastructure Map



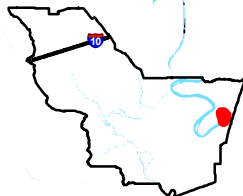
Baton Rouge Area Chamber®

Syngenta Site Electrical Transmission Infrastructure Map



Syngenta Site
Parish, LA

BRAC



Livingston Parish

LEGEND

- Site Boundary (358.77 Ac. ±)
- Substation
- Existing Entergy 138 kV Transmission Line
- Existing Entergy 230 kV Transmission Line
- Existing Roadway
 - Rural State Highway
 - Local
 - Stream
 - Waterbody



Date: 5/13/2020
Project Number: 212161
Drawn By: BNF
Checked By: EEB

CSRS

General Notes:
1. No attempt has been made by CSRS, Inc. to verify site boundary, title, actual legal ownership, deed restrictions, servitudes, easements, or other burdens on the property, other than that furnished by the client or his representative.
2. Transportation data from 2013 TIGER datasets via U.S. Census Bureau at ftp2.census.gov/geo/tiger/TIGER2013.
3. Utility information from visual inspection and/or the individual utility operators. Exact field location has not been determined by survey. The lines shown are an approximate representation only and may have been offset for depiction purposes.
4. 2015 aerial imagery from USDA-APFO National Agricultural Inventory Project (NAIP) and may not reflect current ground conditions.

