

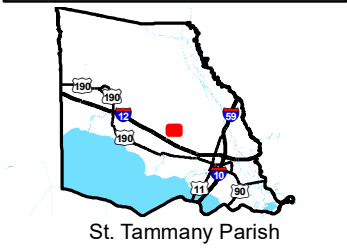
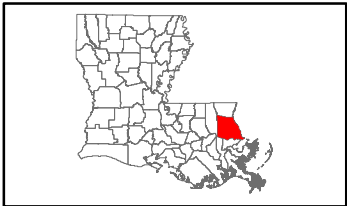
Exhibit M. Tamanend Business Park East Site Natural Gas Infrastructure Upgrade Map



Tamanend Business Park East Site Natural Gas Infrastructure Upgrade Map

Natural Gas Infrastructure
Tamanend Business Park East Site
St. Tammany Parish, LA

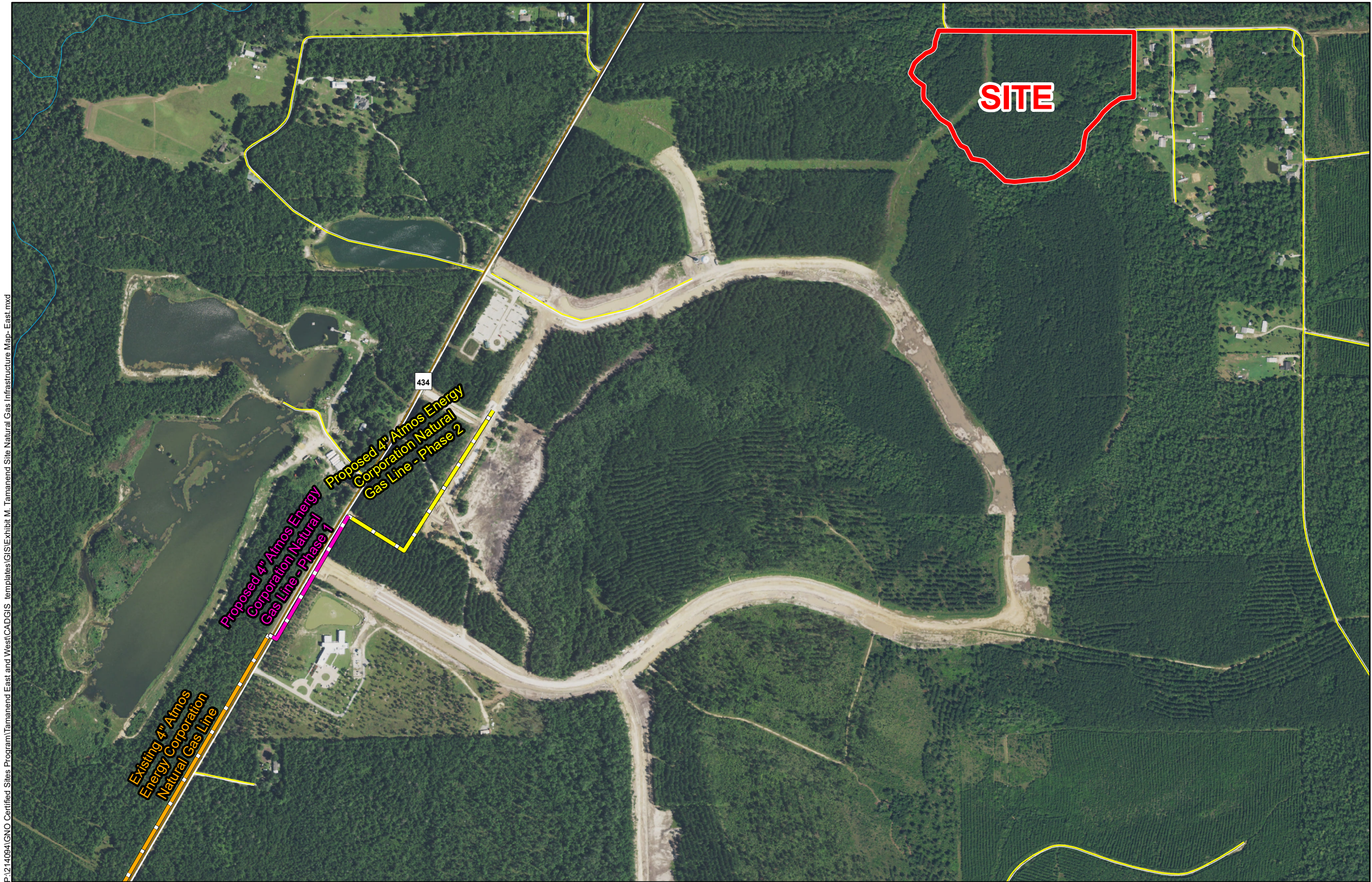
St. Tammany EDF



LEGEND

- Site Boundary (31.86 Ac. ±)
- Existing Natural Gas Distribution**
 - Existing 4" Atmos Energy Corporation Natural Gas Line
- Proposed Natural Gas Distribution**
 - Existing 4" Atmos Energy Corporation Natural Gas Line - Phase 1
 - Proposed 4" Atmos Energy Corporation Natural Gas Line - Phase 2
- Existing Roadway**
 - Rural State Highway
 - Local Roads
 - Stream

P:\214094\GNO Certified Sites Program\Tamanend East and West\CAD\GIS templates\GIS\Exhibit M. Tamanend Site Natural Gas Infrastructure Map- East.mxd



General Notes:

1. No attempt has been made by CSRS, Inc. to verify site boundary, title, actual legal ownership, deed restrictions, servitudes, easements, or other burdens on the property, other than that furnished by the client or his representative.
2. Transportation data from 2013 TIGER datasets via U.S. Census Bureau at ftp2.census.gov/geo/tiger/TIGER2013.
3. Utility information from visual inspection and/or the individual utility operators. Exact field location has not been determined by survey. The lines shown are an approximate representation only and may have been offset for depiction purposes.
4. 2015 aerial imagery from USDA-APFO National Agricultural Inventory Project (NAIP) and may not reflect current ground conditions.



Scale 1:9,000
0 480 960 Feet



| | |
|-----------------|-----------|
| Date: | 8/23/2016 |
| Project Number: | 214094 |
| Drawn By: | TMK |
| Checked By: | JAY |

CSRS
IMAGINE SHAPE DELIVER
6767 Perkins Road Suite 200 Baton Rouge, LA 70808
Telephone: 225 769-0546 Fax: 225 767-0060
www.csrsonline.com

PROPOSED GAS MAIN LOCATION



Proposed Atmos Gas - preliminary
Tamanend Business Park Site
St Tammany Advanced Campus
Hwy. 434
Lacombe, LA

PROJECT NO. 020.34973

SHEET 1 OF 1

DATE 08/22/2016

N.T.S.

MAP #



© 2009 ATMOS ENERGY

Maps, drawings and electronic data (products) are created for the internal purposes of Atmos Energy with an implication of suitability or fitness for the internal use of the recipient. Atmos Energy will make good faith efforts to provide products that are free from error but does not warrant the accuracy or quality of such products. The locations shown are approximations and are not intended to show exact locations. Products provided to other parties by Atmos Energy are for the internal use of the recipient, and the recipient agrees not to duplicate or distribute the products or any portion of the products to third parties without the prior written permission of Atmos Energy. The recipient further agrees to hold harmless and indemnify Atmos Energy against all claims, costs, expenses and damages resulting from or predicated upon strict liability for personal injuries, death or property damage, on account of any defects in the property provided hereunder.

