

# Exhibit O.

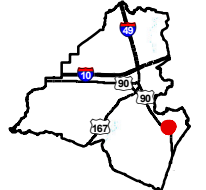
## Maxie & Vida Girouard Site Electrical Transmission Infrastructure Map



# Maxie & Vida Girouard Site Electrical Transmission Infrastructure Map

Maxie & Vida Girouard Site  
Lafayette Parish, LA

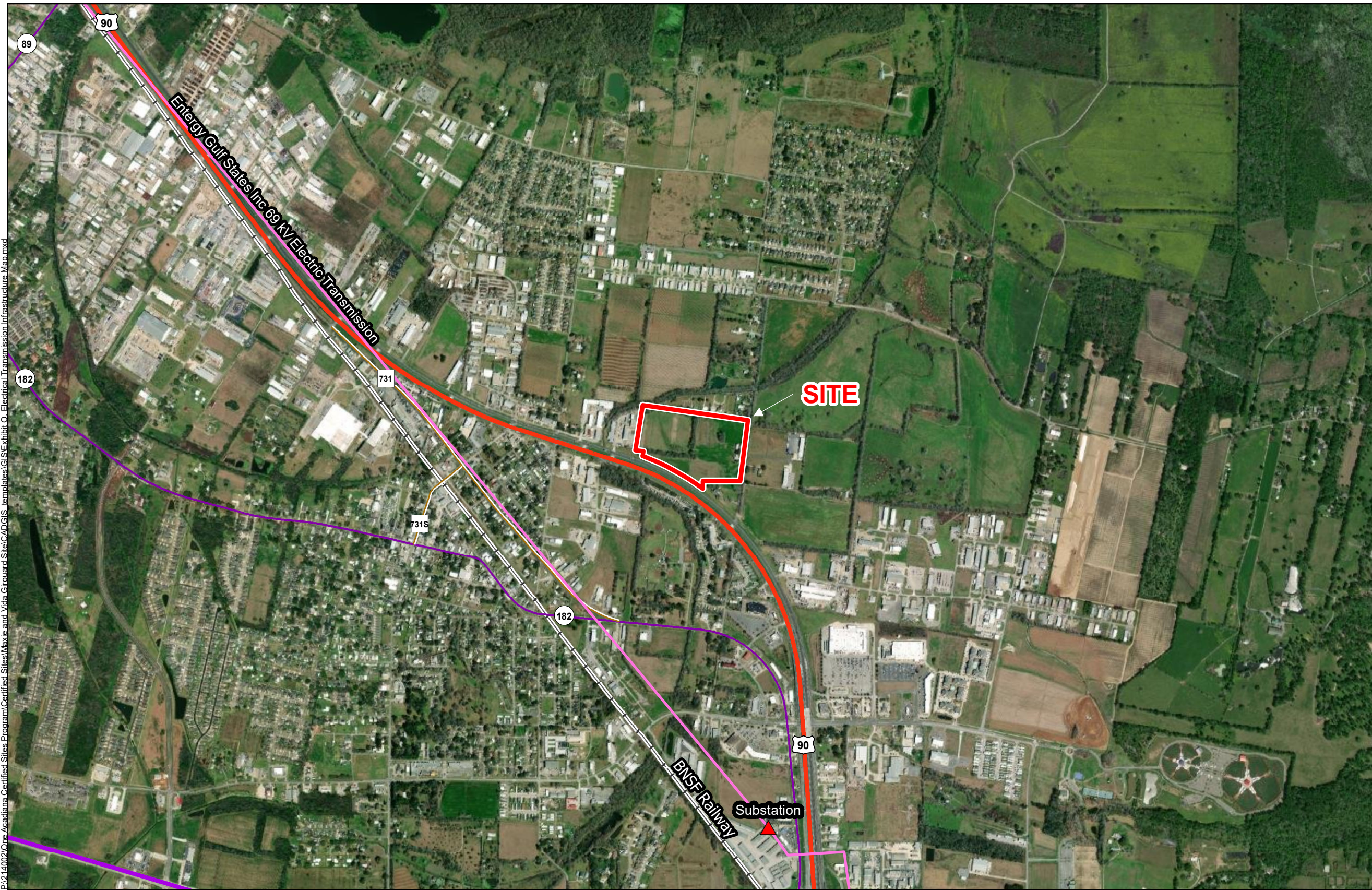
One Acadiana



Lafayette Parish

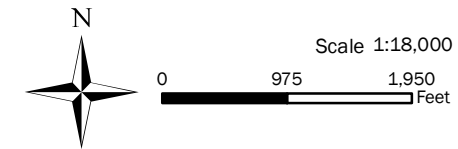
## LEGEND

- Site Boundary (33.43± ac.)
- Electrical Transmission**
- 69 kV
- ▲ Substation
- Existing Roadway**
- US Highway
- 4-Lane State Highway
- Urban State
- Rural State Highway
- Railroad



P:\214002\One Acadiana Certified Sites Program\Certified Sites\Maxie and Vida Girouard Site\CAD\GIS Templates\GIS\Exhibit O - Electrical Transmission Infrastructure Map.mxd

General Notes:  
 1. No attempt has been made by CSRS, Inc. to verify site boundary, title, actual legal ownership, deed restrictions, servitudes, easements, or other burdens on the property, other than that furnished by the client or his representative.  
 2. Transportation data from 2013 TIGER datasets via U.S. Census Bureau at <ftp://ftp2.census.gov/geo/tiger/TIGER2013>.  
 3. Utility information from visual inspection and/or the individual utility operators. Exact field location has not been determined by survey. The lines shown are an approximate representation only and may have been offset for depiction purposes.  
 4. 2015 aerial imagery from USDA-APFO National Agricultural Inventory Project (NAIP) and may not reflect current ground conditions.



Date:	5/9/2023
Project Number:	214002
Drawn By:	BMS
Checked By:	EEB

