

OVERVIEW

AERIAL

SURVEY

DEMOGRAPHICS



FOR SALE

PROPERTY OVERVIEW

4.6 Acres just off Bullard Ave. Accessed from Bullard via Levy Dr. this property has great access to the surrounding market area and quick connectivity to I-10. Great location for storage, multifamily, hospitality, office and last mile distribution.

PRICE

- \$475,000

SIZE

- 4.6 Acres

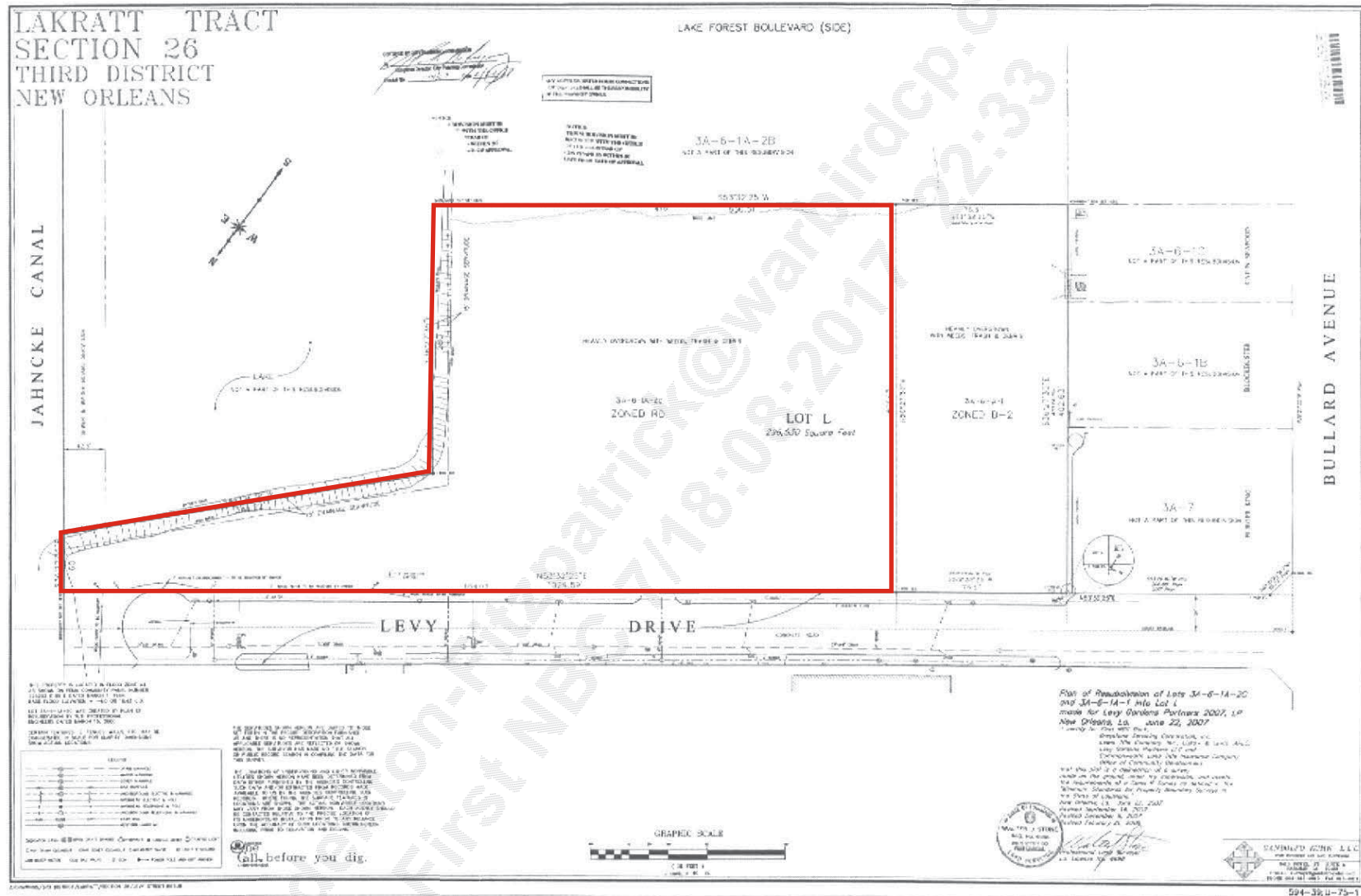
ZONING

- C-1 Commercial

FRONTAGE ON LEVY DR.

- 1,029 FT





CLICK IMAGE FOR LARGER VIEW

Member of
 RETAIL BROKERS NETWORK