

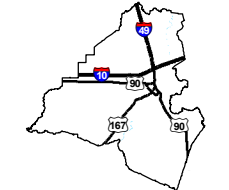
# Exhibit Q. Martial Farms Local Product Pipelines Map





# Martial Farms Local Product Pipelines Map

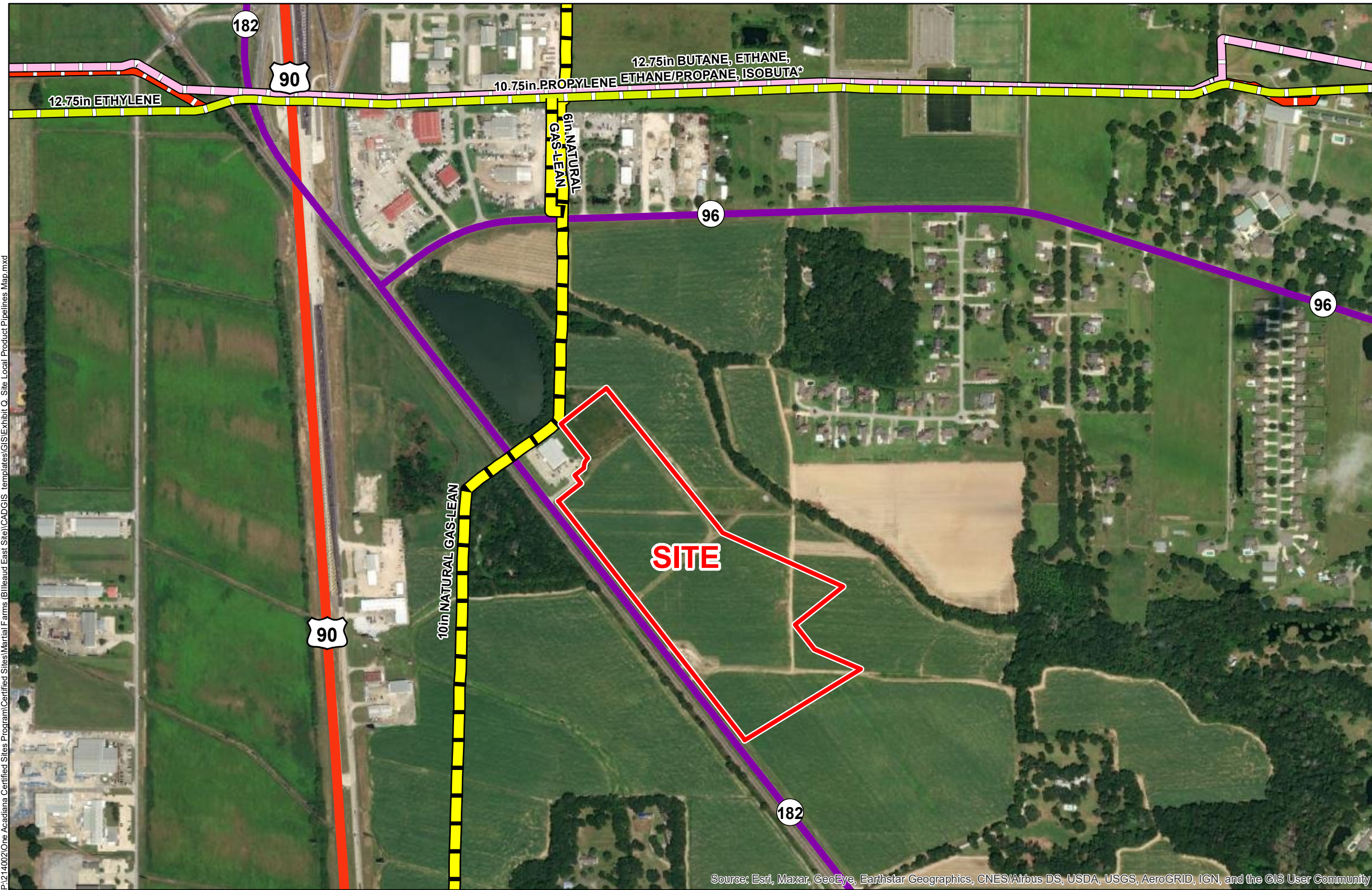
Martial Farms  
Lafayette Parish, LA



Lafayette Parish

## LEGEND

- ▭ Site Boundary (32.55 Ac.±)
- NPMS\_Pipelines**
- ▭ PRODUCT SERVICE PIPELINE
- ▭ ETHYLENE
- ▭ NATURAL GAS-LEAN
- ▭ PROPYLENE
- Existing Roadway**
- ▭ US Highway
- ▭ Urban State Highway



P:\214002\One Acadiana Certified Sites Program\Certified Sites\Martial Farms (Billeaud East Site)\CAD\GIS templates\GIS\Exhibit C\_Site Local Product Pipelines Map.mxd

Source: Esri, Maxar, GeoEye, Earthstar Geographics, CNES/Airbus DS, USDA, USGS, AeroGRID, IGN, and the GIS User Community

- General Notes:
1. No attempt has been made by CSRS, Inc. to verify site boundary, title, actual legal ownership, deed restrictions, servitudes, easements, or other burdens on the property, other than that furnished by the client or his representative.
  2. Transportation data from 2013 TIGER datasets via U.S. Census Bureau at [ftp2.census.gov/geo/tiger/TIGER2013](http://ftp2.census.gov/geo/tiger/TIGER2013).
  3. Pipeline information from IHS, Inc. and is current as of 09/2015. Product types in individual lines can vary and products represented here are current as of the publication of this exhibit, but may change depending on the demands and requirements of each system. Exact field location has not been determined by survey. The lines shown are an approximate representation only and may have been offset for depiction purposes.
  4. 2015 aerial imagery from USDA-APFO National Agricultural Inventory Project (NAIP) and may not reflect current ground conditions.



Date:	6/28/2021
Project Number:	214002
Drawn By:	SEW
Checked By:	EEB

