

Exhibit U. I-12 Industrial Site Drive Time Map

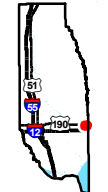


CSRS

I - 12 Industrial Site Drive Time Map

I - 12 Industrial Site
Tangipahoa Parish, LA

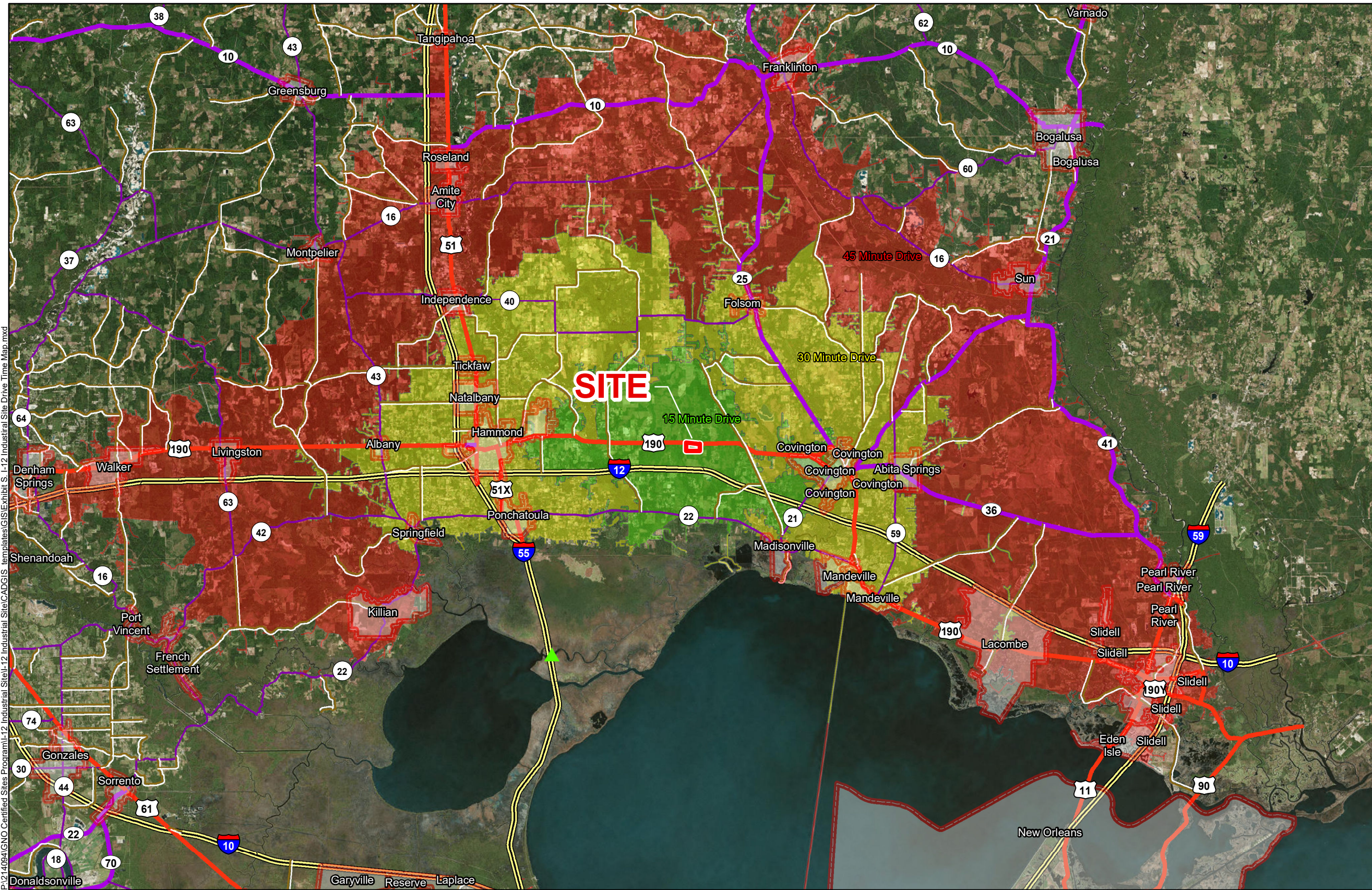
GNO



Tangipahoa Parish

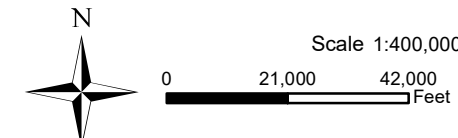
LEGEND

- Site Boundary
- Drive Times**
- 15 Minute Drive
- 30 Minute Drive
- 45 Minute Drive
- ▲ Shallow Draft Port
- City Limits
- Existing Roadway**
- Interstate
- US Highway
- 4-Lane State Highway
- Urban State Highway
- Rural State Highway



P:\214094\GNO Certified Sites Program\I-12 Industrial Site\I-12 Industrial Site\CAD\GIS templates\GIS\Exhibit S- I-12 Industrial Site Drive Time Map.mxd

General Notes:
 1. No attempt has been made by CSRS, Inc. to verify site boundary, title, actual legal ownership, deed restrictions, servitudes, easements, or other burdens on the property, other than that furnished by the client or his representative.
 2. Transportation data from 2013 TIGER datasets via U.S. Census Bureau at [ftp://ftp2.census.gov/geo/tiger/TIGER2013](http://ftp2.census.gov/geo/tiger/TIGER2013).
 3. 2015 aerial imagery from ESRI Online Basemaps and may not reflect current ground conditions.



Date: 5/2/2019
 Project Number: 214094
 Drawn By: AMB
 Checked By: DWC

