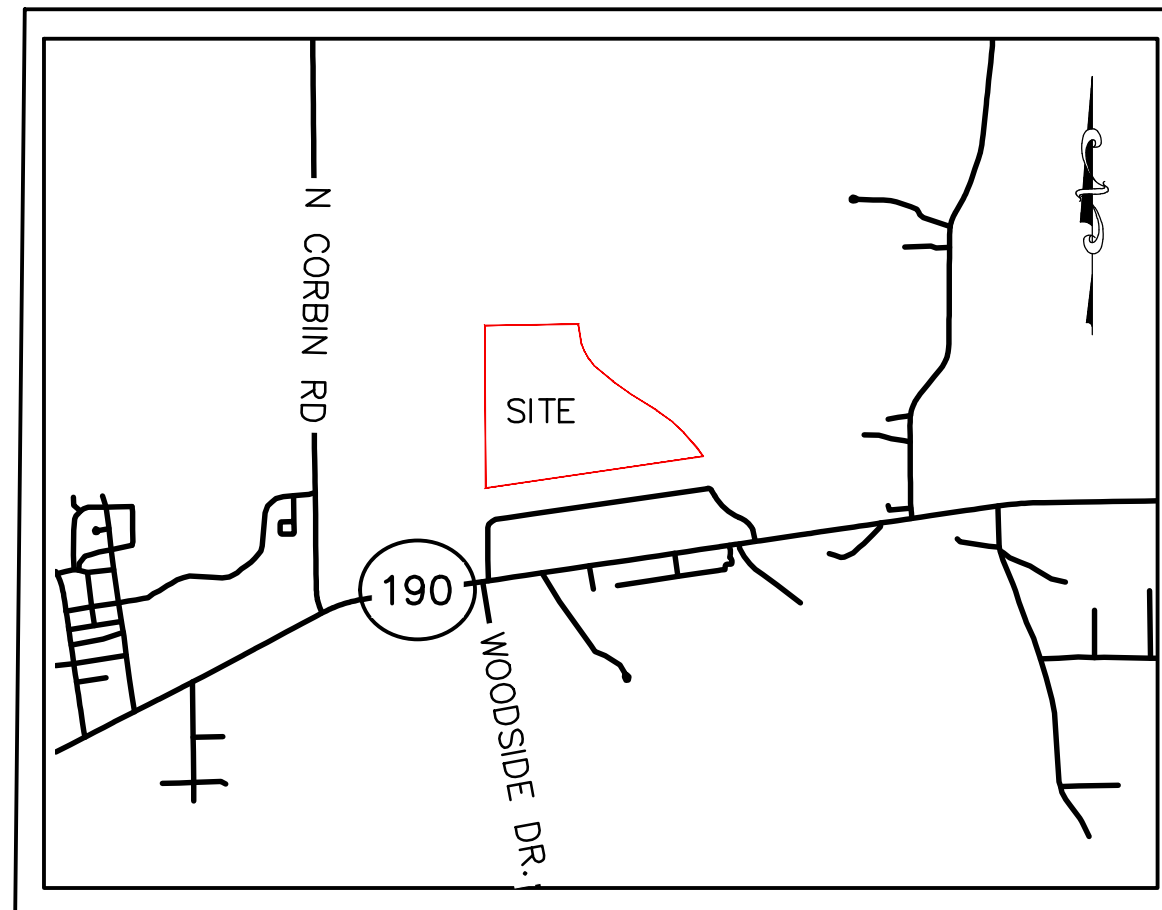


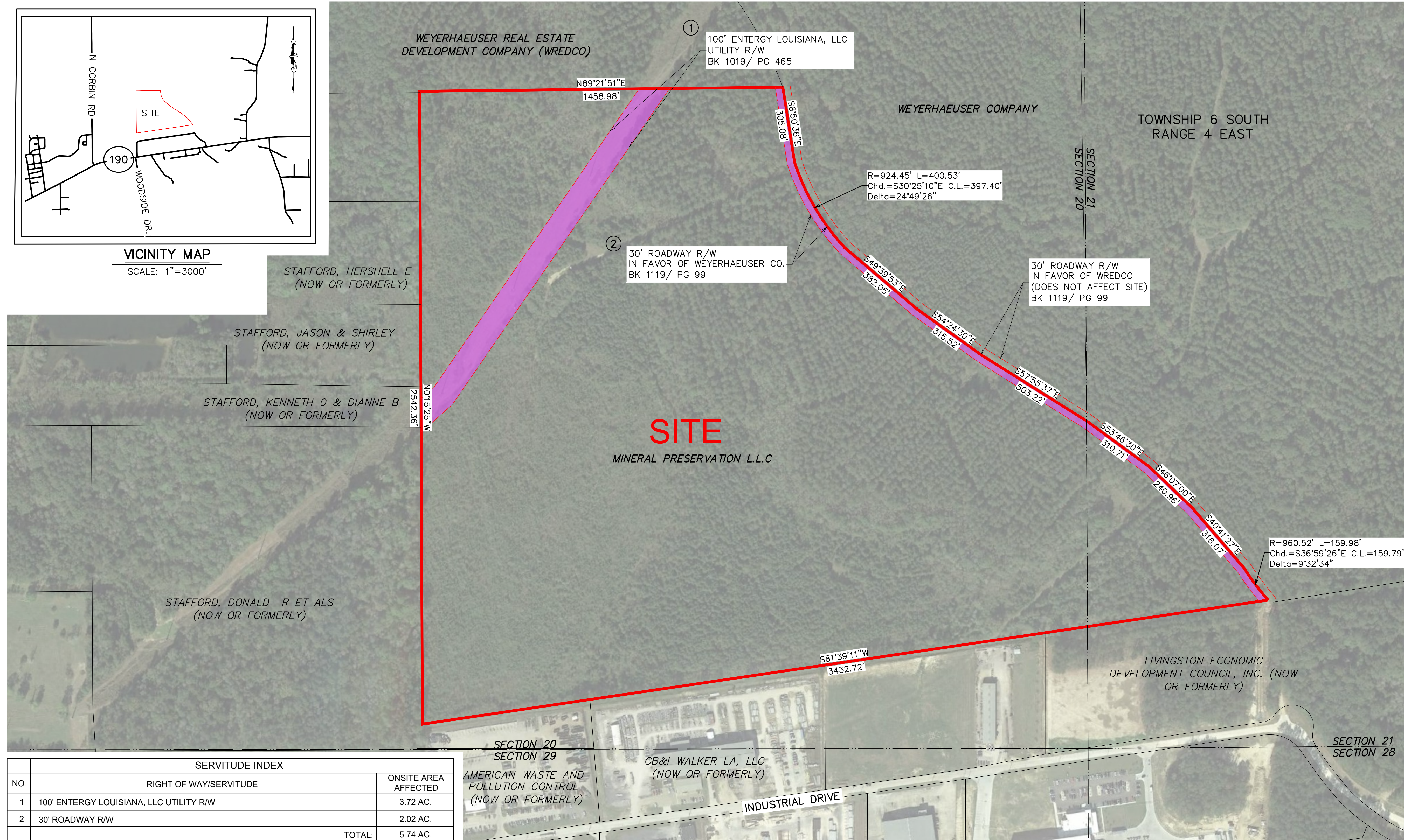
Exhibit H. Hornsby Industrial Park Property Rights of Way Exhibit



Hornsby Industrial Park Property Rights of Way Exhibit



VICINITY MAP
 SCALE: 1"=3000'

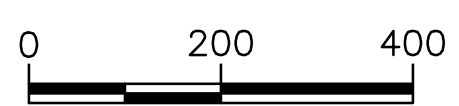


Project:

**Hornsby Industrial Park
 Livingston Parish, Louisiana**

Client:

BRAC



Revisions:

#	Date	Description

Key Plan:

LEGEND

- SITE BOUNDARY (127.25 AC.)
- ON-SITE RIGHT OF WAY OR EASEMENT (5.74 AC.)

Sheet Title:

Property Rights Exhibit

Date:	JANUARY 2018
Project Number:	212161
Drawn By:	TMK
Checked By:	TMG
Sheet:	

SERVITUDE INDEX		
NO.	RIGHT OF WAY/SERVITUDE	ONSITE AREA AFFECTED
1	100' ENTERGY LOUISIANA, LLC UTILITY R/W	3.72 AC.
2	30' ROADWAY R/W	2.02 AC.
TOTAL:		5.74 AC.

GENERAL NOTES:

1. No attempt has been made by CSRS, Inc. to verify title, actual legal ownership, deed restrictions, servitudes, easements, or other burdens on the property, other than that furnished by the client or his representative.
2. Depicted exhibit based on "Map Showing Survey & Division of a 475.924 Acre Tract into JS-1 & JS-2 Located in Section 17, 20 and 21, T 6 S-R 4 E, Greensburg Land District, Livingston Parish, Louisiana for Joel Sanders" by McLin and Associates Inc. dated December 12, 2011.
3. This is not a property boundary survey and is not intended to meet the Louisiana standards of practice for property boundary surveys. Bearings and distances of tracts were obtained from document referenced above.
4. The coordinate system used is NAD83 Louisiana State Plane South (US feet). Coordinates were derived by overlaying the boundary on an aerial photograph and are within 100' of true location.
5. Rights of Way, Easements, and Servitudes shown hereon have not been verified in the field and any shown are for general locative information only.

P:\212161\Sites Under Contract\021 - Hornsby Industrial Park\CAD\IS_templates\CAD\ Site Boundary.dwg Apr 26, 2018 - 1:49pm