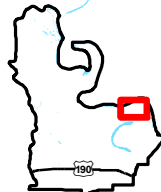


Exhibit R. Angel Ranch Site US Geological Survey Quad Map


USGS Topographic Map
Angel Ranch Site
Pointe Coupee Parish, LA

BRAC

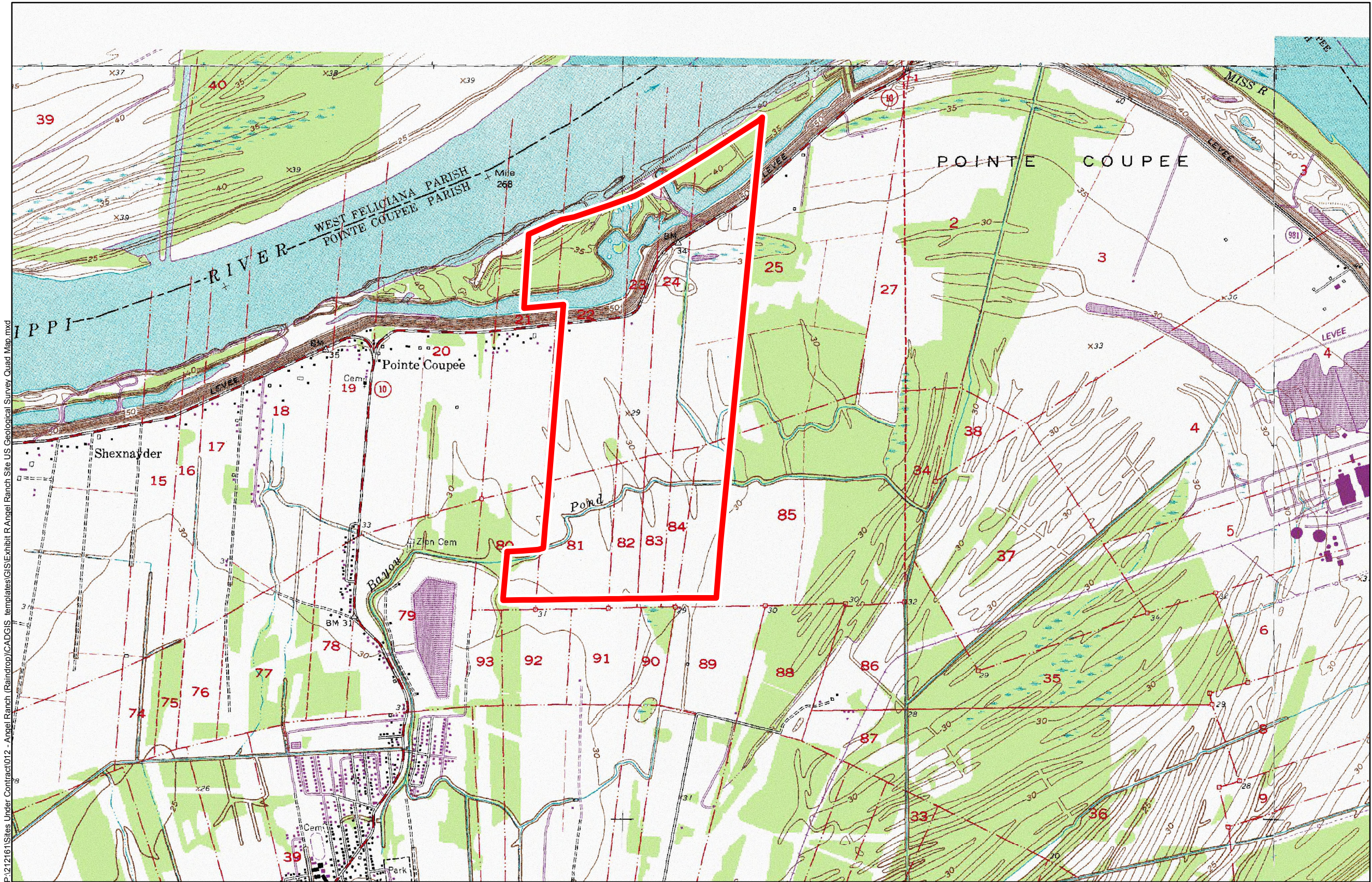


Pointe Coupee Parish

LEGEND

 Site Boundary
(731.56 Acres +/-)

P:\212161\Sites Under Contract\012 - Angel Ranch (Raindrop)\CADGIS templates\GIS\Exhibit R\Angel Ranch Site US Geological Survey Quad Map.mxd



General Notes:
1. No attempt has been made by CSRS, Inc. to verify site boundary, title, actual legal ownership, deed restrictions, servitudes, easements, or other burdens on the property, other than that furnished by the client or his representative.
2. Topo data and symbologies from USDA NRCS site <http://datagateway.nrcs.usda.gov/GDGOrder.aspx> as created by USDA/NRCS National Geospatial Center of Excellence "USDA-NRCS-NCGC Digital Raster Graphic MrSID Mosaic".
3. Parcel information taken from Pointe Coupee Parish Assessor GIS data provided by BRAC. **Parcels in the Site are: 00309900, 00277335 and 00277340. Site size is approximately 731.56 Acres +/-.**



Scale 1:24,000
0 1,250 2,500 Feet



Date: 10/28/2014
Project Number: 212161.20.012
Drawn By: MMS
Checked By: TMG

CSRS
IMAGINE SHAPE DELIVER

6767 Perkins Road Suite 200 Baton Rouge, LA 70808
Telephone: 225 769-0546 Fax: 225 767-0060
www.csrsonline.com