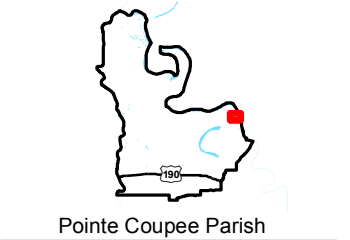


Exhibit Y. Moseley North Site Color Aerial Photo Map

2013 Aerial Imagery
Moseley North Site
Pointe Coupee Parish, LA

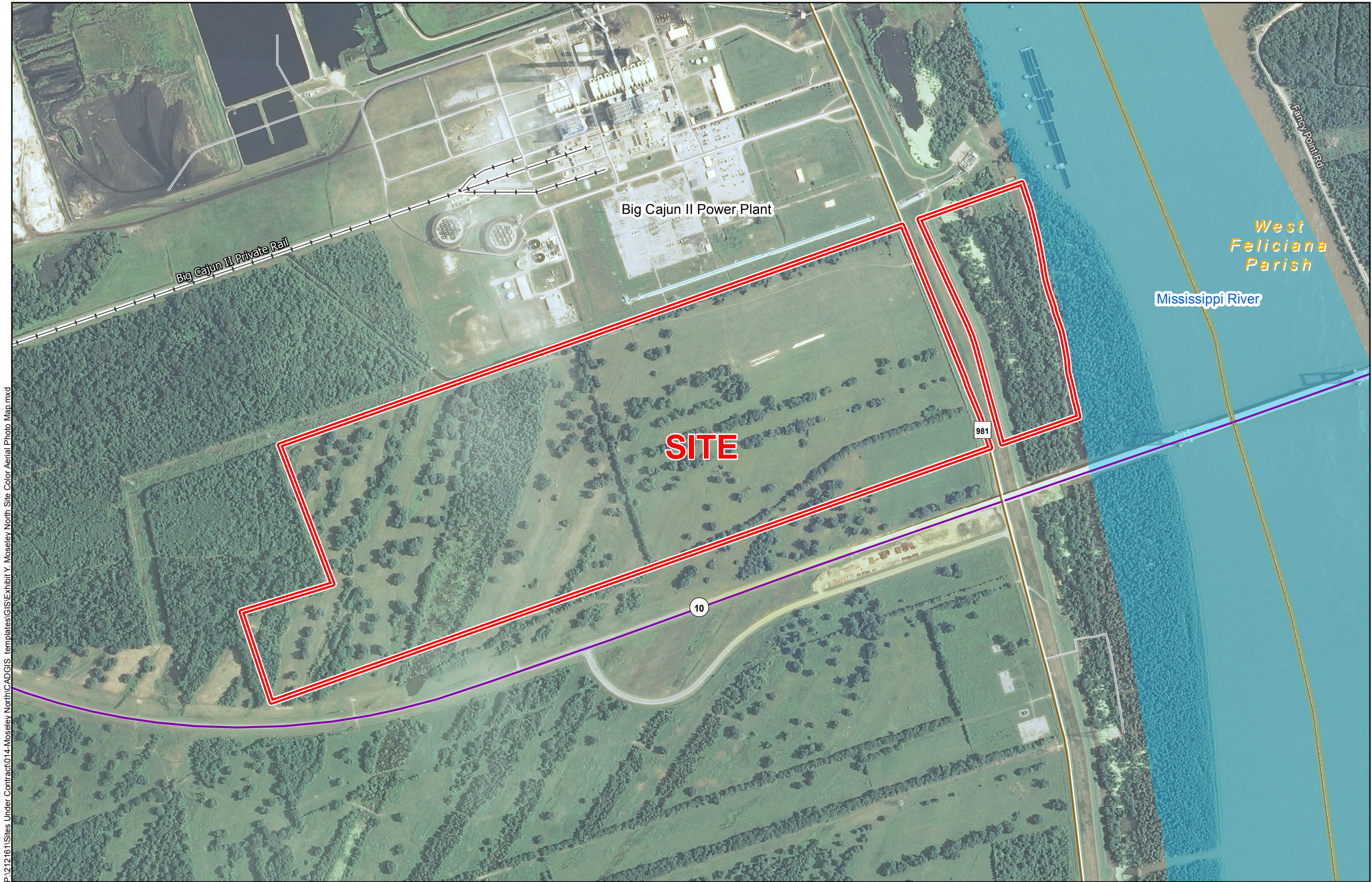
BRAC



Pointe Coupee Parish

LEGEND

Site Boundary (304.24 Acres +/-)



P:\212161\Sites Under Contract\014-Moseley North\CAD\GIS templates\GIS\Exhibit Y. Moseley North Site Color Aerial Photo Map.mxd

- General Notes:
1. No attempt has been made by CSRS, Inc. to verify site boundary, title, actual legal ownership, deed restrictions, servitudes, easements, or other burdens on the property, other than that furnished by the client or his representative.
 2. Transportation data from 2013 TIGER datasets via U.S. Census Bureau at <ftp://ftp2.census.gov/geo/tiger/TIGER2013>.
 3. 2013 aerial imagery from USDA-APFO National Agricultural Inventory Project (NAIP) and may not reflect current ground conditions.
 4. Site Boundary data depicted according to the Pointe Coupee Parish Assessor GIS data provided by BRAC. **Parcels in the Site are: 00299083, 00305514, 00305530, 00305521, and 00299065. Site size is approximately 326.71 Acres +/-.**
 5. 2013 aerial imagery from USDA-APFO National Agricultural Inventory Project (NAIP) and may not reflect current ground conditions.



Scale 1:10,000
0 540 1,080 Feet



Date: 8/10/2015
Project Number: 212161.20.014
Drawn By: MAT
Checked By: TMG

CSRS
IMAGINE SHAPE DELIVER

6767 Perkins Road Suite 200 Baton Rouge, LA 70808
Telephone: 225 769-0546 Fax: 225 767-0060
www.csrsonline.com