

# Exhibit V. Calhoun Technology Park - North Site Soils Conservation Service Map

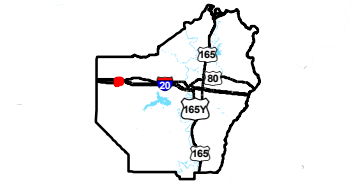
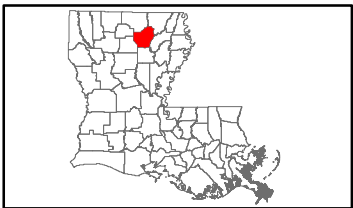




# Calhoun Technology Park- North Site Soils Conservation Service Map

Calhoun Technology  
Park- North Site  
Ouachita Parish, LA

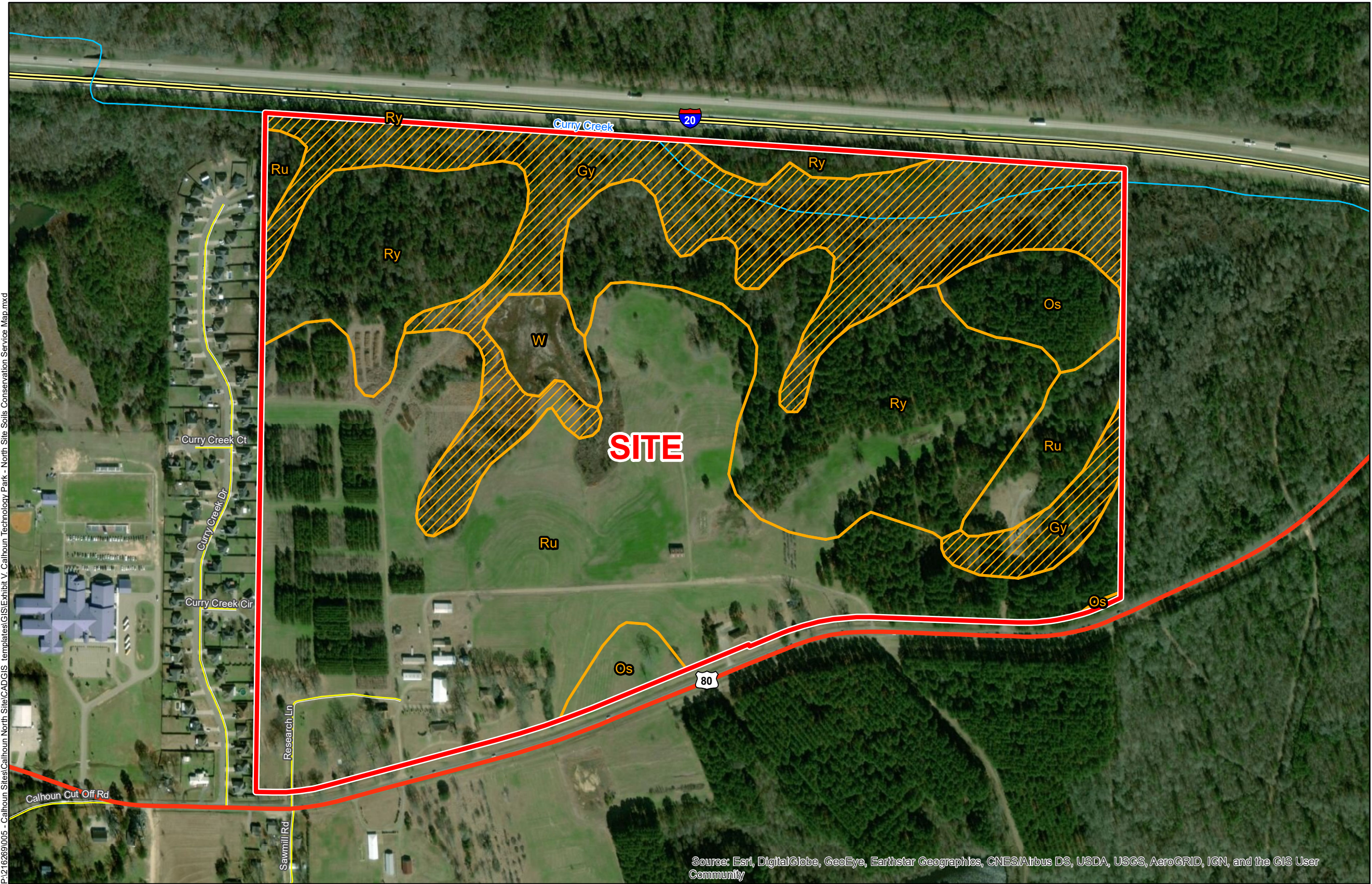
NLEP



Ouachita Parish

LEGEND

- Site Boundary
- Soil Type
  - Gy - Guyton-Rosebloom complex, frequently flooded (80% hydric)
  - Os - Ora-Savannah association, gently rolling (0% hydric)
  - Ru - Ruston-Lucy association, undulating (0% hydric)
  - Ry - Ruston-Lucy association, hilly (0% hydric)
  - W- Water
- Existing Roadway
  - Interstate
  - US Highway
  - Local Roads
  - Stream or River



General Notes:  
1. No attempt has been made by CSRS, Inc. to verify site boundary, title, actual legal ownership, deed restrictions, servitudes, easements, or other burdens on the property, other than that furnished by the client or his representative.  
2. Transportation data from 2013 TIGER datasets via U.S. Census Bureau at <http://ftp2.census.gov/geo/tiger/TIGER2013>.  
3. Soils data from USDA SSURGO website: <http://websoilsurvey.sc.egov.usda.gov/App/WebSoilSurvey.aspx>.  
4. 2015 aerial imagery from USDA-APFO National Agricultural Inventory Project (NAIP) and may not reflect current ground conditions.

Source: Esri, DigitalGlobe, GeoEye, Earthstar Geographics, CNES/Airbus DS, USDA, USGS, AeroGRID, IGN, and the GIS User Community



Scale 1:5,500  
0 290 580 Feet

north louisiana  
economic partnership

Date: 3/8/2019  
Project Number: 216269  
Drawn By: DWC  
Checked By: TMK

CSRS  
IMAGINE SHAPE DELIVER  
6767 Perkins Road Suite 200 Baton Rouge, LA 70808  
Telephone: 225 769-0546 Fax: 225 767-0060  
[www.csrsonline.com](http://www.csrsonline.com)