

Exhibit A.

Crosspoint North Site Color Aerial Photo Map

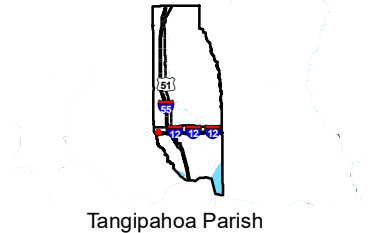
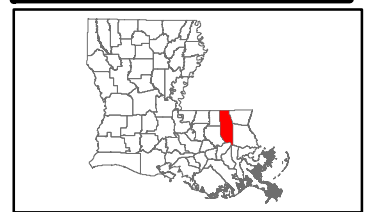


GREATER NEW ORLEANS
INC
REGIONAL ECONOMIC DEVELOPMENT

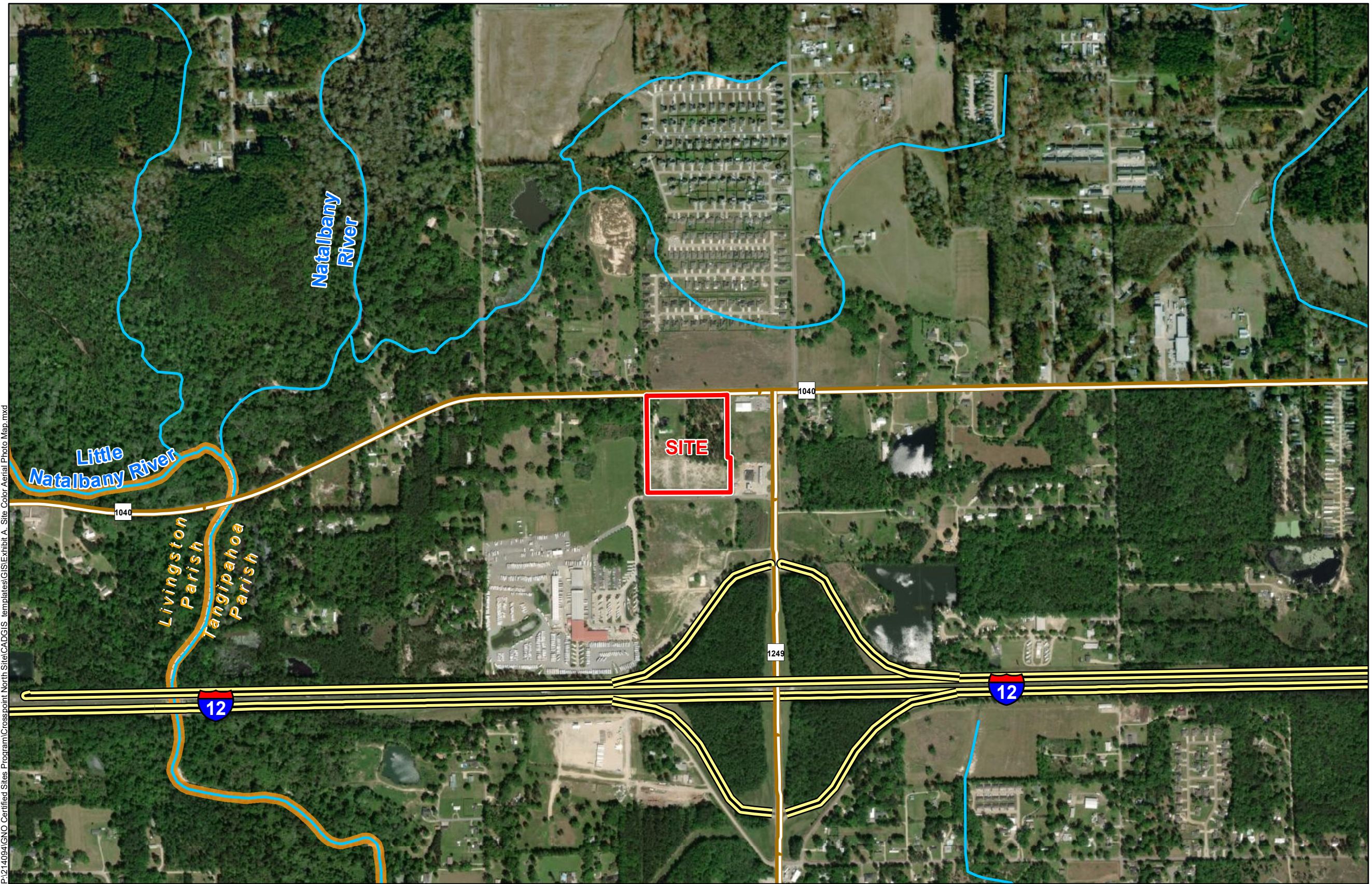
Crosspoint North Site Color Aerial Photo Map

Crosspoint North Site
Tangipahoa Parish, LA

GNO

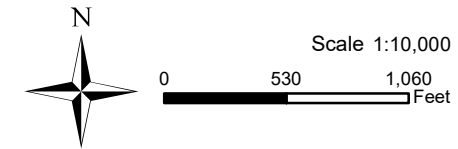


- LEGEND**
- Site Boundary (12.74 Ac. ±)
 - Parish Boundary
 - Existing Roadway**
 - Interstate
 - Rural State Highway
 - Local Roads
 - Stream



P:\214094\GNO_Certified_Sites_Program\Crosspoint_North_Site\CADGIS_templates\GIS\Exhibit_A_Site_Color_Aerial_Photo_Map.mxd

General Notes:
 1. No attempt has been made by CSRS, Inc. to verify site boundary, title, actual legal ownership, deed restrictions, servitudes, easements, or other burdens on the property, other than that furnished by the client or his representative.
 2. Transportation data from 2013 TIGER datasets via U.S. Census Bureau at [ftp://ftp2.census.gov/geo/tiger/TIGER2013](http://ftp2.census.gov/geo/tiger/TIGER2013).
 3. 2015 aerial imagery from USDA-APFO National Agricultural Inventory Project (NAIP) and may not reflect current ground conditions.



Date: 2/11/2021
 Project Number: 214094
 Drawn By: SEW
 Checked By: EEB

