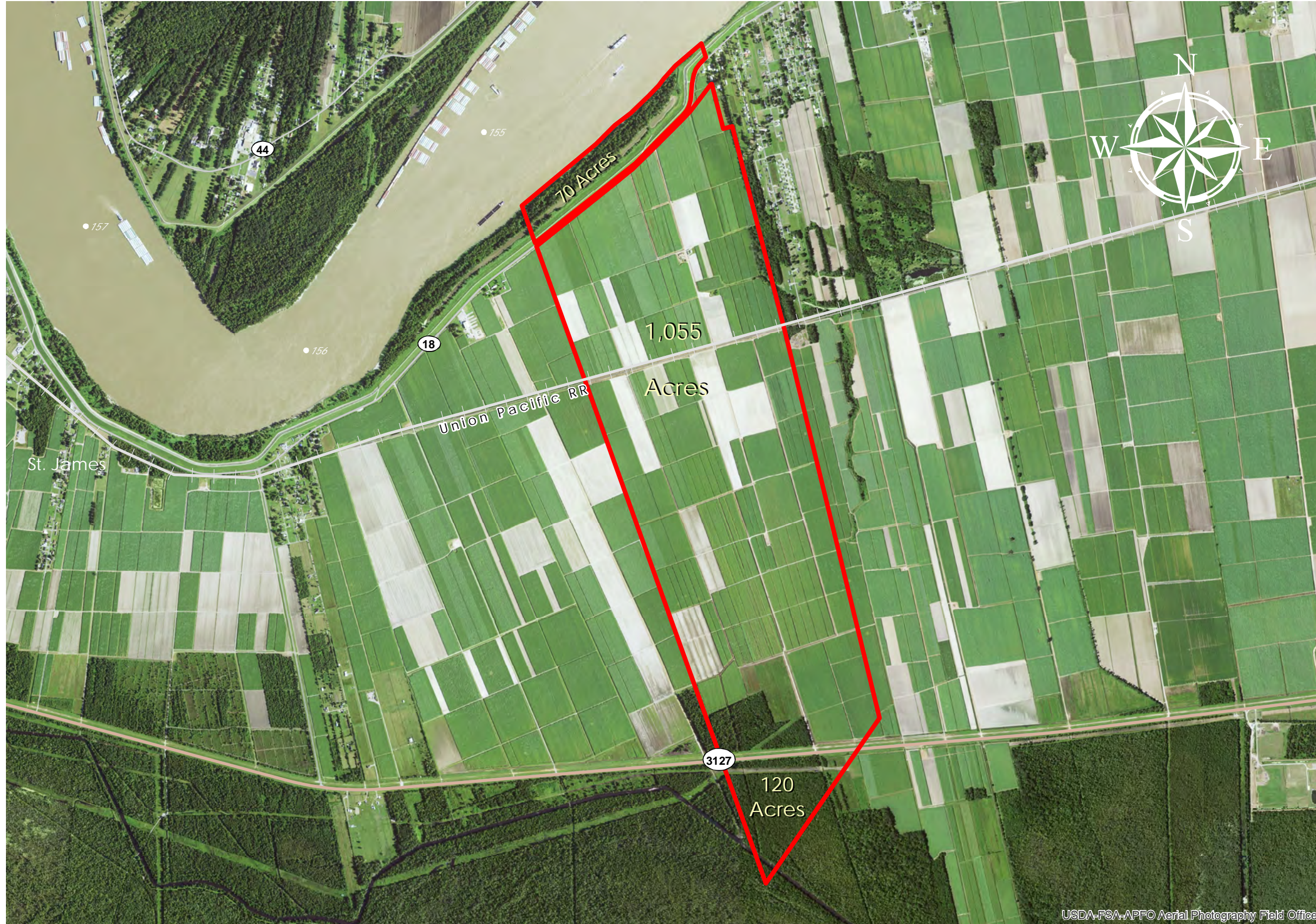


BESSIE-K (#89)



BESSIE-K

+/- 1,245 Acres 503.8 Hectares
 +/- 4,900' River Frontage 1,493.5m River Frontage
 +/- 4,100' UP Rail Onsite 1,249.7m UP Rail Onsite

Resident Industry

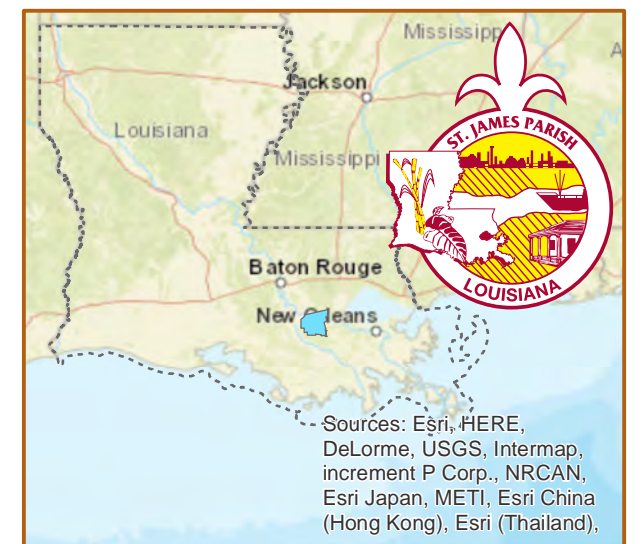
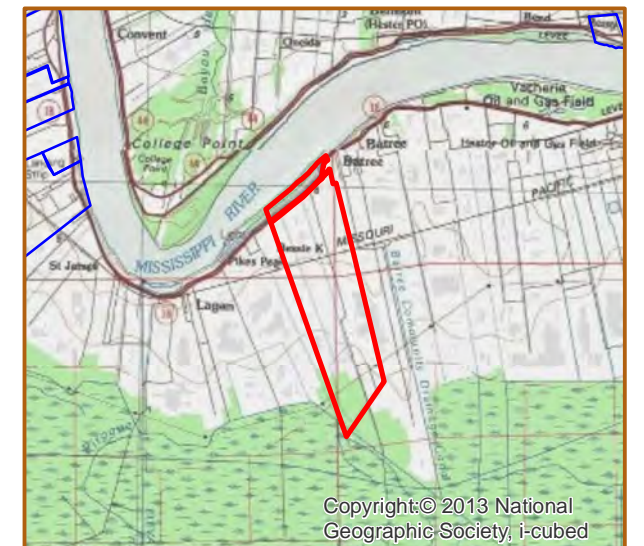
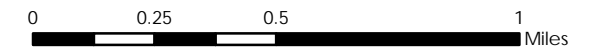
— Interstates

Railroads

U.S. Highway

State Highway

Updated 2018-05-14



USDA-FSA-APFO Aerial Photography Field Office

Available Site Descriptions

PROPERTY NAME: **BESSIE-K** Map #: **89**

Mile Marker: **W 154.8** Acreage: **1,245.00** Hectares: **503.84**

GENERAL DETAILS

Site Draft: **Deep Draft** River Frontage (in ft.): **4,900.00** Rail Frontage (in ft.): **4,100.00**

AGENT DETAILS

Agent: **Linda Prudhomme** Company: **Port of South Louisiana** Phone: **985-652-9278**

TRANSPORTATION

Airport: **Louis Armstrong International (42 miles); Baton Rouge Metropolitan (57 miles); PSL Executive Regional Airport (20 miles)**

Rail: **UP (Onsite - 4,100 ft)**

Highway: **I-10 (16 miles); US 61 (13 miles); LA 70 (13 miles); LA 3127 (Onsite); LA 18 (Borders)**

Zoning: **None** Adjacent Land Use: **Agricultural**

Access Road: **Paved** Parish: **St. James**

UTILITIES

Electricity: **Entergy** Water: **St. James Parish Utilities**

Natural Gas: **St. James Parish Utilities** Sewage: **St. James Parish Utilities**

Telecommunications: **AT&T**