

# 1924 Lafayette Street and 717 S. Claiborne Ave. **NAL**Latter & Blum

1924 Lafayette Street and 717 S. Claiborne Ave., New Orleans, LA 70113

Listing ID: 30794339  
 Status: Active  
 Property Type: Industrial For Lease  
 Industrial Type: Flex Space  
 Contiguous Space: 2,750 - 12,607 SF  
 Total Available: 12,607 SF  
 Lease Rate: \$7.75 PSF (Annual)  
 Base Monthly Rent: \$8,142  
 Lease Type: NNN  
 Loading: 2 Doors  
 Ceiling: 18 ft.  
 Drive-In Bays: 2 Bays



## Overview/Comments

1924 Lafayette Street is a total of 12,617 square feet warehouse office in two buildings with a 13,824 square foot fenced yard area.. The site has a 9,867 square foot warehouse/office building (1,950 sf of office) and a 2,750 square foot warehouse/office building (approx. 900 sf of office)

The larger building has two 12' x 12' grade level doors and two 10' x 10' van height docks. The smaller building has a 10X 10 grade level door

Central location adjacent to Expressway in the CBD. 3 phase electric and natural gas.

## More Information Online

<https://www.lacdb.com//listing/30794339>

## QR Code

Scan this image with your mobile device:



## General Information

Tax ID/APN: 41031567  
 Industrial Type: Flex Space  
 Zoning: H-1

## Available Space

Suite/Unit Number:	1924 & 717	Lease Rate:	\$7.75 PSF (Annual)
Space Available:	12,607 SF	Lease Type:	NNN
Minimum Divisible:	2,750 SF	Offices:	4
Maximum Contiguous:	12,607 SF	Kitchen/Breakroom:	Yes
Space Type:	New	Loading Doors:	2
Date Available:	06/01/2022	Drive In Bays:	2
Lease Term (Months):	36 Months	Clear Height:	18

## Area & Location

Property Located Between: Cypress, Lafayette and S. Derbigny  
 Area Description: New Orleans, LA

## Building Related

Total Number of Buildings:	2	Parking Description:	Ample
Number of Stories:	1	Amps:	400
Year Built:	1940	Volts:	240
Year Renovated:	2011	Heat Type:	Natural Gas
Construction/Siding:	Metal Siding	Heat Source:	Central
Exterior Description:	Masonry	Lighting:	Fluorescent

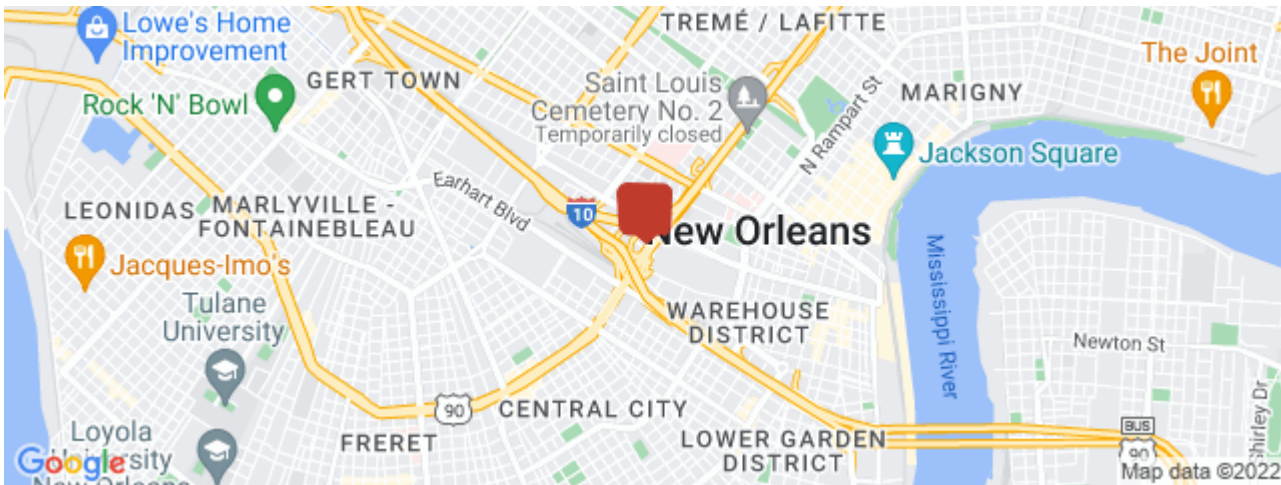
## Land Related

Lot Frontage: 125  
Lot Depth: 125

## Location

Address: 1924 Lafayette Street and 717 S. Claiborne Ave.,  
New Orleans, LA 70113  
County: Orleans

MSA: New Orleans-Metairie  
Submarket: Uptown-Garden District



## Property Images



1924Lafayette\_shot07



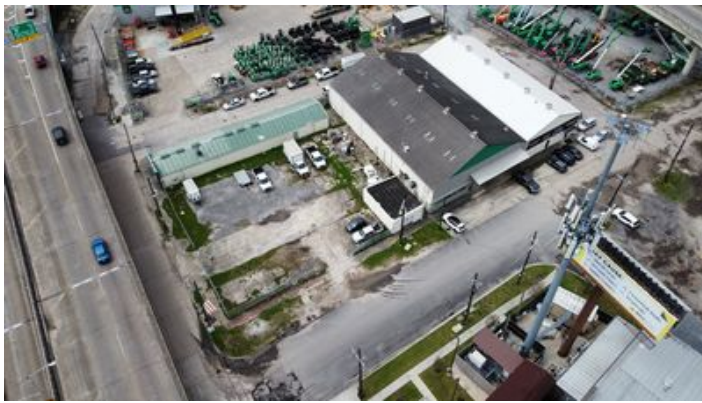
1924Lafayette\_drone05



1924Lafayette\_shot06



1924Lafayette\_drone04



1924Lafayettettdrone03



1924Lafayettettdrone02

## Property Contacts

---



### R D Friend

NAI/Latter & Blum Commercial New Orleans

504-525-1311 [0]

dfriend@latterblum.com