

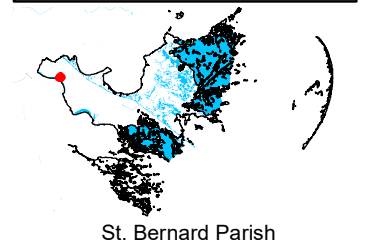
Exhibit L. Sinclair Site Electrical Distribution Infrastructure Map



Sinclair Site Electrical Distribution Infrastructure Map

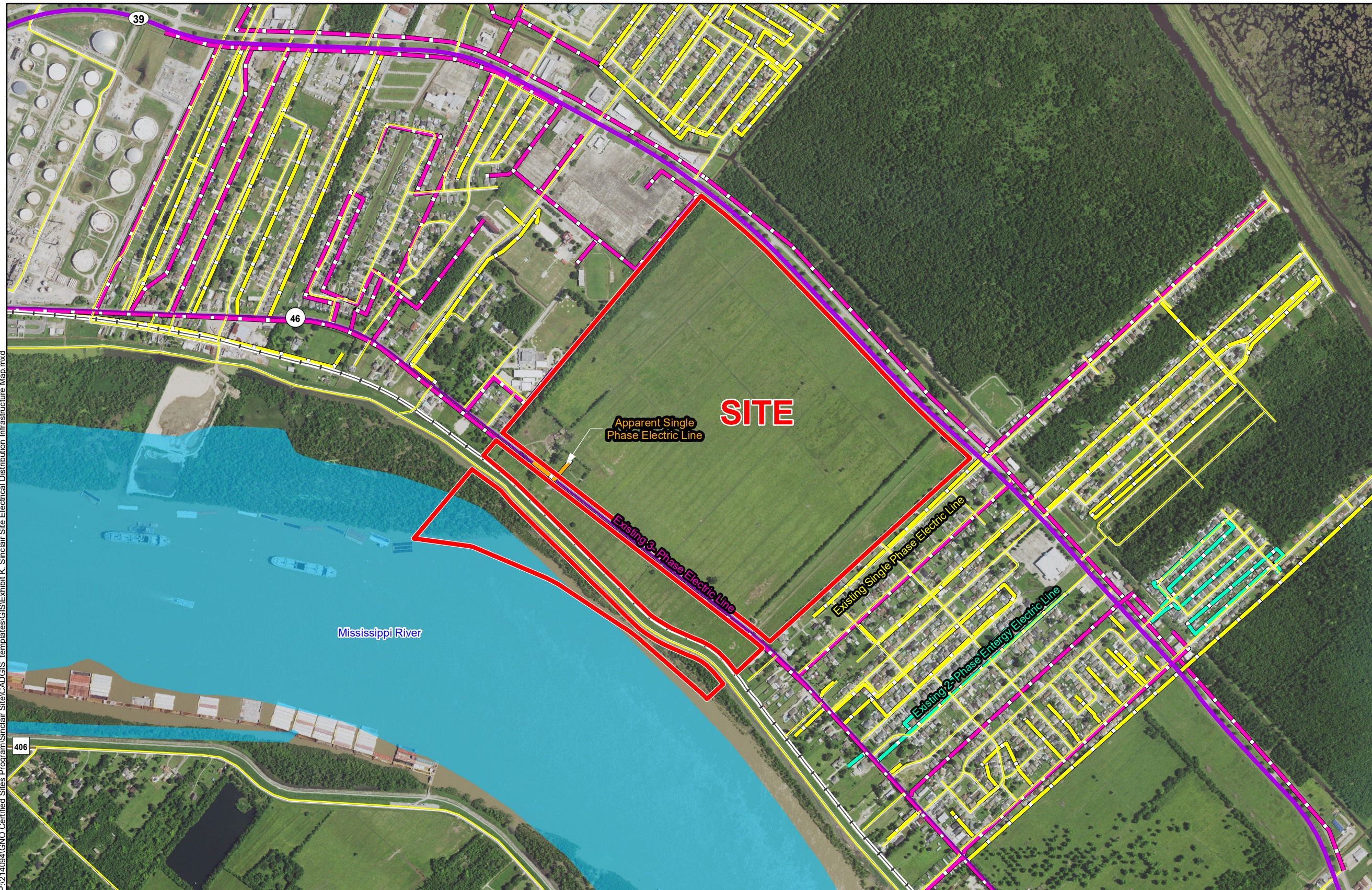
Existing Electric Distribution
Sinclair Site
St. Bernard Parish, LA

St. Bernard EDF



LEGEND

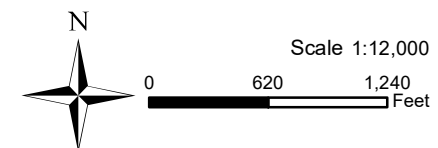
- Sinclair Site Boundary (285.64 Ac. ±)
- Existing Energy Electric Distribution**
- Existing 2-Phase Energy Electric Line
- Existing 3-Phase Energy Electric Line
- Existing Single-Phase Energy Electric Line
- Apparent Electric Distribution**
- Apparent Single-Phase Electric Line
- Existing Roadway**
- 4-Lane State Highway
- Urban State Highway
- Rural State Highway
- Local Roads
- Railroad
- Waterbody



P:\214094\GNO Certified Sites Program\Sinclair Site\CAD\GIS templates\GIS\Exhibit K. Sinclair Site Electrical Distribution Infrastructure Map.mxd

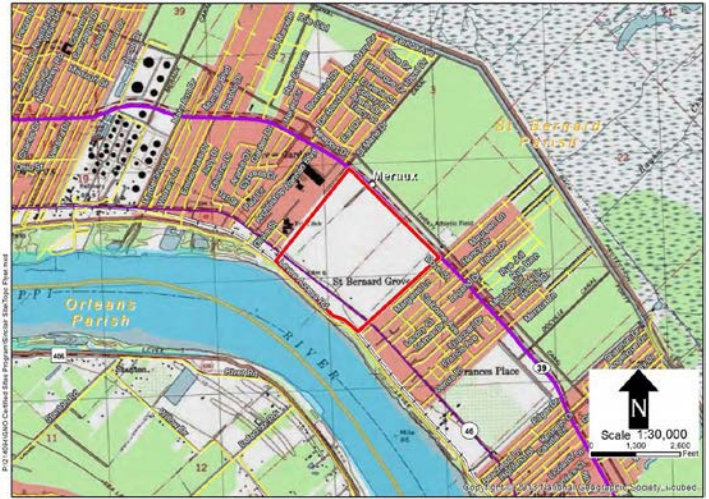
General Notes:

1. No attempt has been made by CSRS, Inc. to verify site boundary, title, actual legal ownership, deed restrictions, servitudes, easements, or other burdens on the property, other than that furnished by the client or his representative.
2. Transportation data from 2013 TIGER datasets via U.S. Census Bureau at [ftp://ftp2.census.gov/geo/tiger/TIGER2013](http://ftp2.census.gov/geo/tiger/TIGER2013).
3. Utility information from visual inspection and/or the individual utility operators. Exact field location has not been determined by survey. The lines shown are an approximate representation only and may have been offset for depiction purposes.
4. 2015 aerial imagery from USDA-APFO National Agricultural Inventory Project (NAIP) and may not reflect current ground conditions.



Date:	10/17/2016
Project Number:	214094
Drawn By:	TMK
Checked By:	JAY

CSRS
IMAGINE SHAPE DELIVER
6767 Perkins Road Suite 200 Baton Rouge, LA 70808
Telephone: 225 769-0546 Fax: 225 767-0060
www.csrsonline.com



Sinclair Site Electric Distribution Infrastructure Map

Date: 06/15/2016

Provider Name:

Entergy

Address:

4809 Jefferson Highway

City:

Jefferson

State:

LA

Zip Code:

70121

Contact Information

Name:

Chris Gilliland

Phone:

504-840-2516

Email:

cgillil@entergy.com

Title:

Sr. Project Manager

Is electric distribution currently available at this site?

Yes

No

Is 3-Phase service currently available to this site?

Yes

No

Is dual feed currently available to this site?

Yes

No

What is the size of the nearest **distribution** line and distance (feet) to the site?

Size (kV) 13.8

Distance 0

If 3-phase is not available at the site, what is the size (kV) of and distance (feet) to the nearest three-phase line?

Size (kV)

Distance

What is the size of and distance (miles) to the nearest **transmission** line with a 69kV or greater?

Size (kV) 230

Distance 1.4

What is the distance (miles) to the nearest **substation** to serve the site?

Distance 1.4

Name Meroux

What is the distance (miles) to the next closest **substation** to serve the site?

Distance 3

Name Chalmette

What is the current **Peak Load** capacity available to this site (MW)? If no load information is available, please provide minimum MW currently available to the site.

Peak MW

0

Is a plan underway to improve services at or near this site within the next year? If so, please provide anticipated upgrades, location, and time for implementation.

No known planned upgrades at this time. Peak load capacity (MW) will change over time and is dependent on several factors. Please contact Entergy for project specific evaluations to verify available capacity.

Sinclair Site Electric Distribution Infrastructure Map



**BUSINESS
DEVELOPMENT**

LOUISIANA

The Sinclair Tract

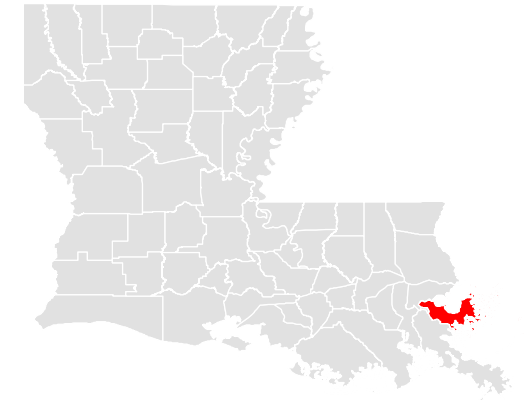
Entergy's Electrical Infrastructure

446 North Blvd
Baton Rouge, LA 70802

Phone: 1-800-542-2668
laed@entergy.com

goentergy.com

ST BERNARD



VICINITY



LEGEND

Property Boundary

Transmission

Substations

230 kV

115 kV

Distribution

Single Phase, 13.8kV

Two Phase, 13.8kV

Three Phase, 13.8kV

NOTE

These drawings are provided merely to assist in economic development efforts. The Entergy Companies make no representations or warranties whatsoever regarding the accuracy or completeness of any information contained herein nor the condition or suitability of any properties. Users should direct inquiries about any property to the listing broker for that property.

SOURCE

Service Layer Credits: Image courtesy of USGS Earthstar Geographics SIO
© 2016 Microsoft Corporation
© Harris Corp, Earthstar Geographics LLC Earthstar Geographics SIO ©
2016 Microsoft Corporation

Source: Transmission-Entergy, 2014;
Distribution-Entergy, 2014 & 2015

Created by: RPG
Date: 06/2016

TRANSMISSION



DISTRIBUTION



Electric line locations are for illustrative purposes only and may not depict the actual physical location.