

Exhibit M. Port Barre Industrial Park- East Site Electrical Transmission Infrastructure Map



Port Barre Industrial Park - East Site Electrical Transmission Infrastructure Map

Port Barre Industrial Park - East Site
St. Landry Parish, LA

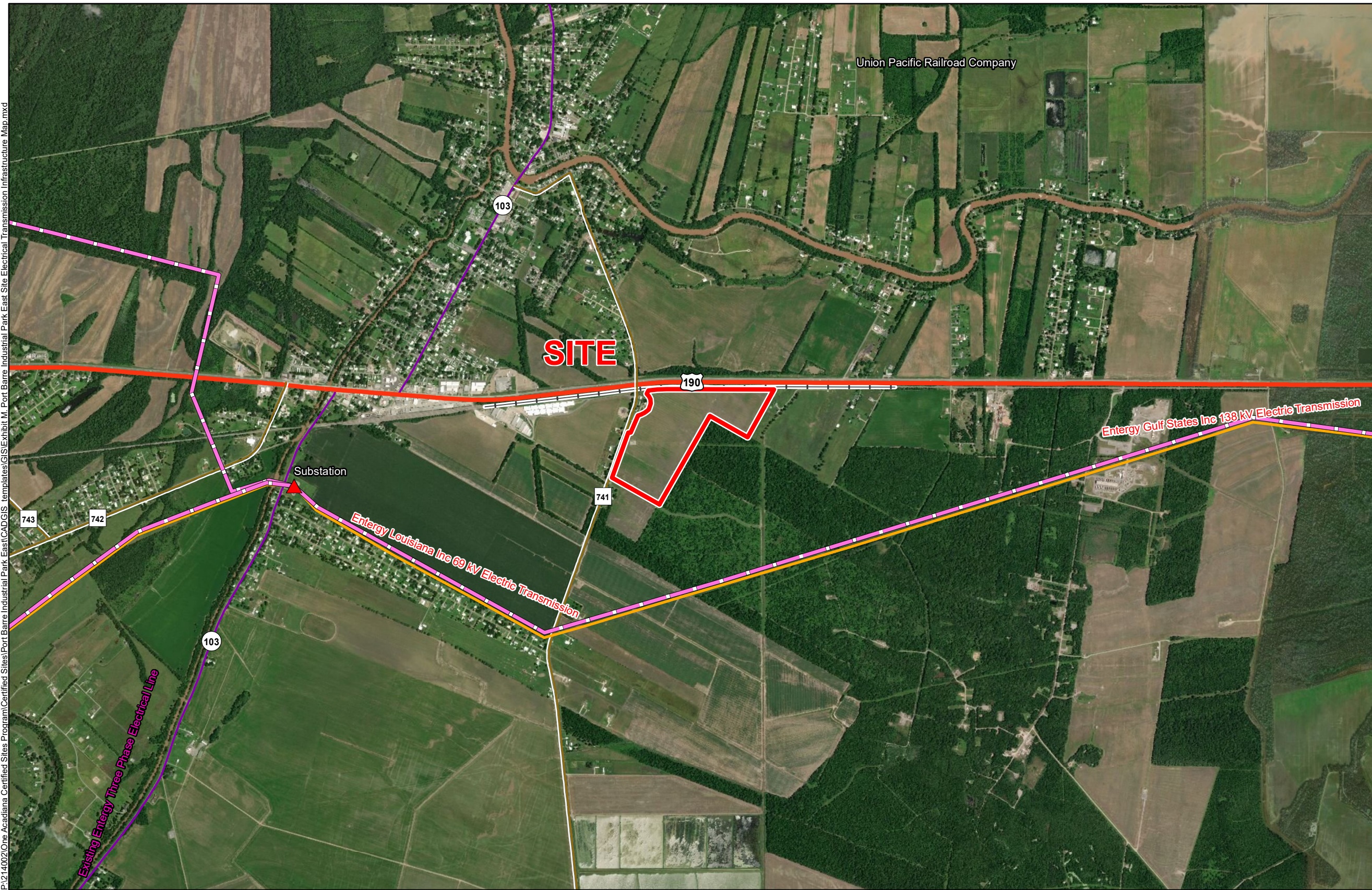
One Acadiana



St. Landry Parish

LEGEND

- Site Boundary
- ▲ Substation
- LA_TransmissionLines_2008**
- Electric Transmission**
- 138 kV
- 69 kV
- Existing Roadway**
- US Highway
- Urban State Highway
- Rural State Highway
- Railroad



P:\214002\One Acadiana Certified Sites Program\Certified Sites\Port Barre Industrial Park East\CAD\GIS templates\GIS\Exhibit M - Port Barre Industrial Park East Site Electrical Transmission Infrastructure Map.mxd

- General Notes:
1. No attempt has been made by CSRS, Inc. to verify site boundary, title, actual legal ownership, deed restrictions, servitudes, easements, or other burdens on the property, other than that furnished by the client or his representative.
 2. Transportation data from 2013 TIGER datasets via U.S. Census Bureau at <ftp://ftp2.census.gov/geo/tiger/TIGER2013>.
 3. Utility information from visual inspection and/or the individual utility operators. Exact field location has not been determined by survey. The lines shown are an approximate representation only and may have been offset for depiction purposes.
 4. 2015 aerial imagery from USDA-APFO National Agricultural Inventory Project (NAIP) and may not reflect current ground conditions.



Date:	3/19/2019
Project Number:	214002
Drawn By:	DWC
Checked By:	EEB

CSRS
IMAGINE SHAPE DELIVER
6767 Perkins Road Suite 200 Baton Rouge, LA 70808
Telephone: 225 769-0546 Fax: 225 767-0060
www.csrsonline.com