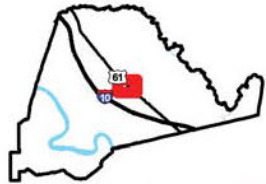


Exhibit V. Britco Site National Wetlands Inventory Map

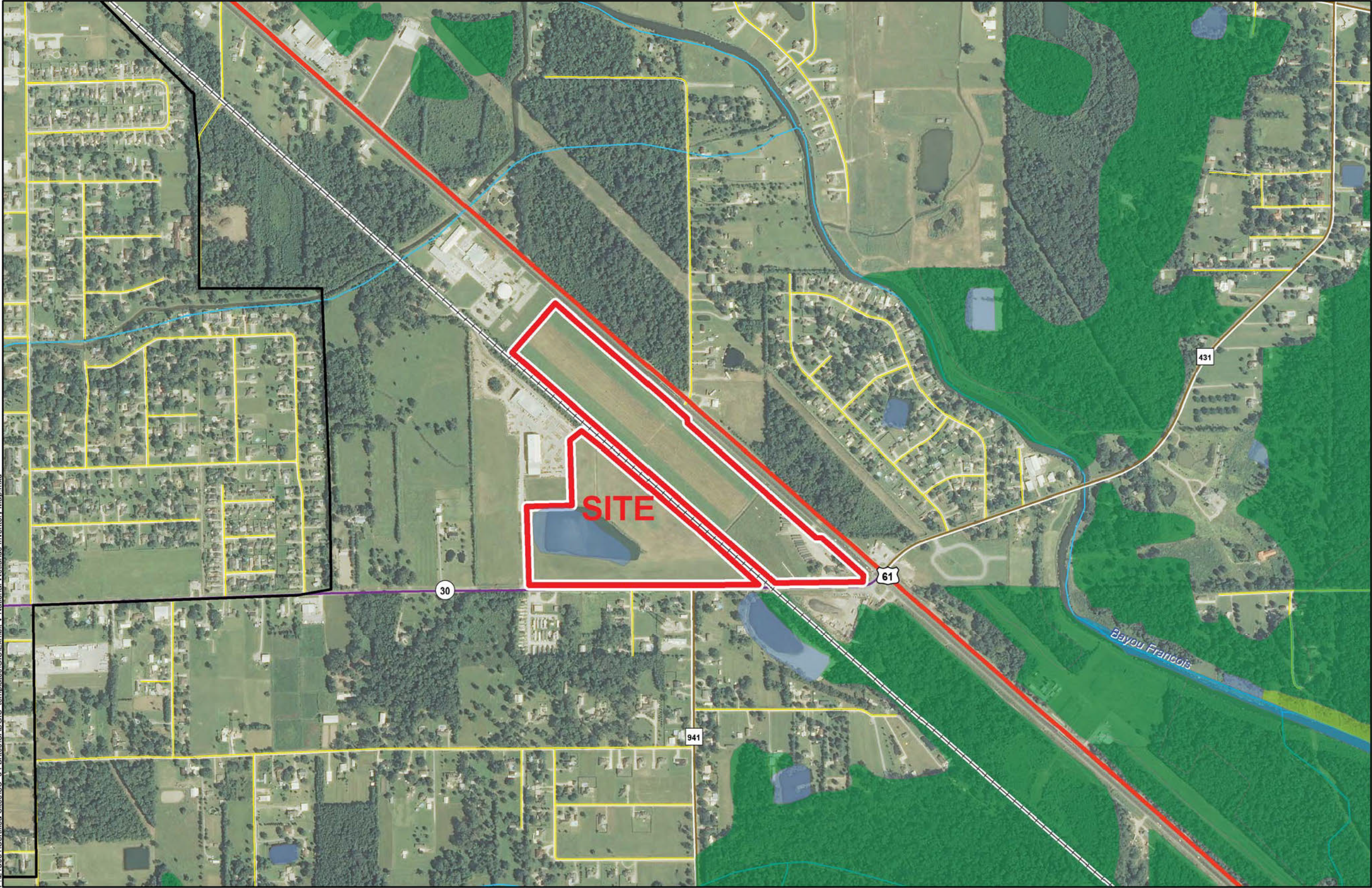
National Wetlands Inventory
Britco Site
Ascension Parish, LA



Ascension Parish

LEGEND

- Site Boundary (68.13 Acres +/-)
- Wetlands Type**
- Freshwater - Forested and Shrub Wetland
- Freshwater Emergent Wetland
- Freshwater Pond
- Riverine
- Gonzales City Boundary
- Existing Roadway**
- US Highway
- Urban State Highway
- Rural State Highway
- Local Roads
- Railroad
- Stream

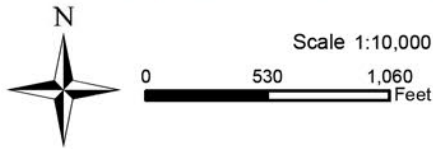


Site Details	
Appx. Site Size:	68.13 Ac. ±
Potential Wetlands:	5.73 Ac. ±



Date:	10/23/2014
Project Number:	213084.20.004
Drawn By:	MMS
Checked By:	TMG

- General Notes:**
1. No attempt has been made by CSRS, Inc. to verify site boundary, title, actual legal ownership, deed restrictions, servitudes, easements, or other burdens on the property, other than that furnished by the client or his representative.
 2. Transportation data from 2013 TIGER datasets via U.S. Census Bureau at <ftp://ftp2.census.gov/geo/tiger/TIGER2013>.
 3. National Wetlands Inventory (NWI) data from http://www.fws.gov/wetlands/Downloads/State/LA_wetlands.zip. A professional wetlands consultant should be contacted to determine if jurisdictional wetlands exist on site.
 4. 2013 aerial imagery from USDA-APFO National Agricultural Inventory Project (NAIP) and may not reflect current ground conditions.



P:\213084\Certified Sites\SC_04 Britco\CAD\GIS_templates\GIS\Exhibit V National Wetlands Inventory Map.mxd