

# Exhibit R. Hornsby Industrial Park Roadway Transportation Infrastructure Wide Map





# Hornsby Industrial Park Roadway Transportation Infrastructure Wide Map

Hornsby Industrial Park  
Livingston Parish, LA

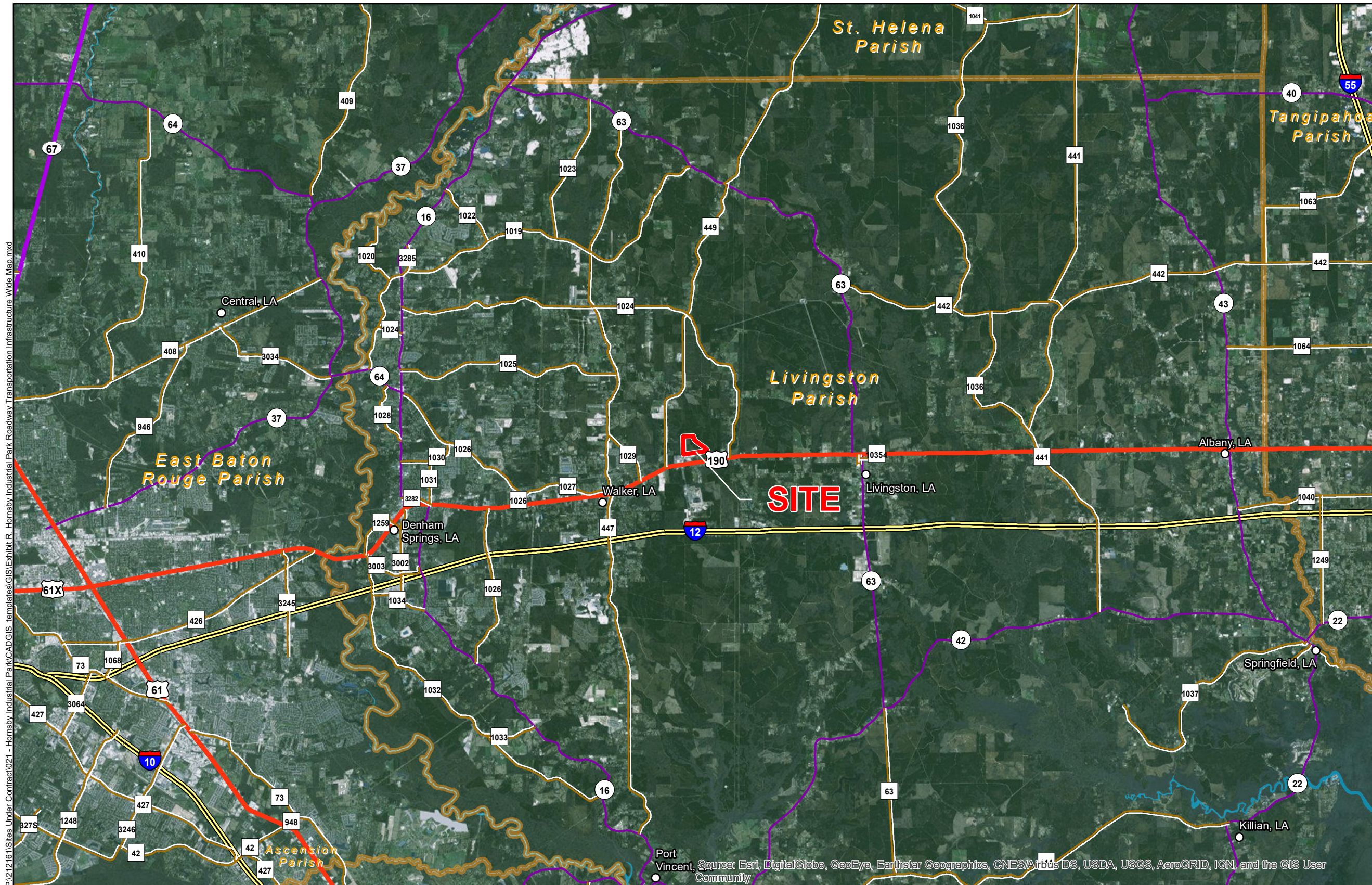
BRAC



Livingston Parish

LEGEND

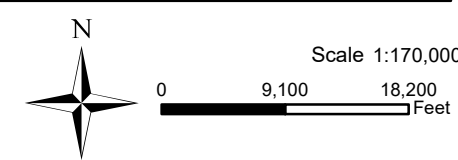
- Site Boundary
- Existing Roadway**
- Interstate
- US Highway
- 4-Lane State Highway
- Urban State Highway
- Rural State Highway
- Cities
- Waterbody
- Parish Boundary



P:\212161\Sites Under Contract\021 - Hornsby Industrial Park\CAD\GIS - Hornsby Industrial Park Roadway Transportation Infrastructure Wide Map.mxd

Source: Esri, DigitalGlobe, GeoEye, Earthstar Geographics, CNES/Airbus DS, USDA, USGS, AeroGRID, IGN, and the GIS User Community

- General Notes:
1. No attempt has been made by CSRS, Inc. to verify site boundary, title, actual legal ownership, deed restrictions, servitudes, easements, or other burdens on the property, other than that furnished by the client or his representative.
  2. Transportation data from 2013 TIGER datasets via U.S. Census Bureau at [ftp://ftp2.census.gov/geo/tiger/TIGER2013](http://ftp2.census.gov/geo/tiger/TIGER2013).
  3. 2015 aerial imagery from USDA-APFO National Agricultural Inventory Project (NAIP) and may not reflect current ground conditions.



Date:	11/6/2017
Project Number:	212161
Drawn By:	TMK
Checked By:	TMG

**CSRS**  
IMAGINE SHAPE DELIVER

6767 Perkins Road Suite 200 Baton Rouge, LA 70808  
Telephone: 225 769-0546 Fax: 225 767-0060  
[www.csrsonline.com](http://www.csrsonline.com)