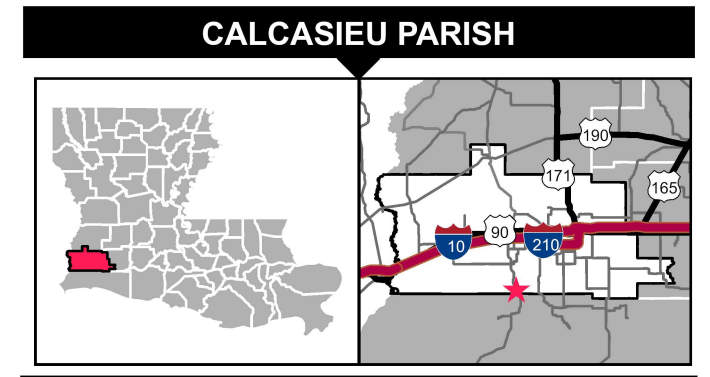
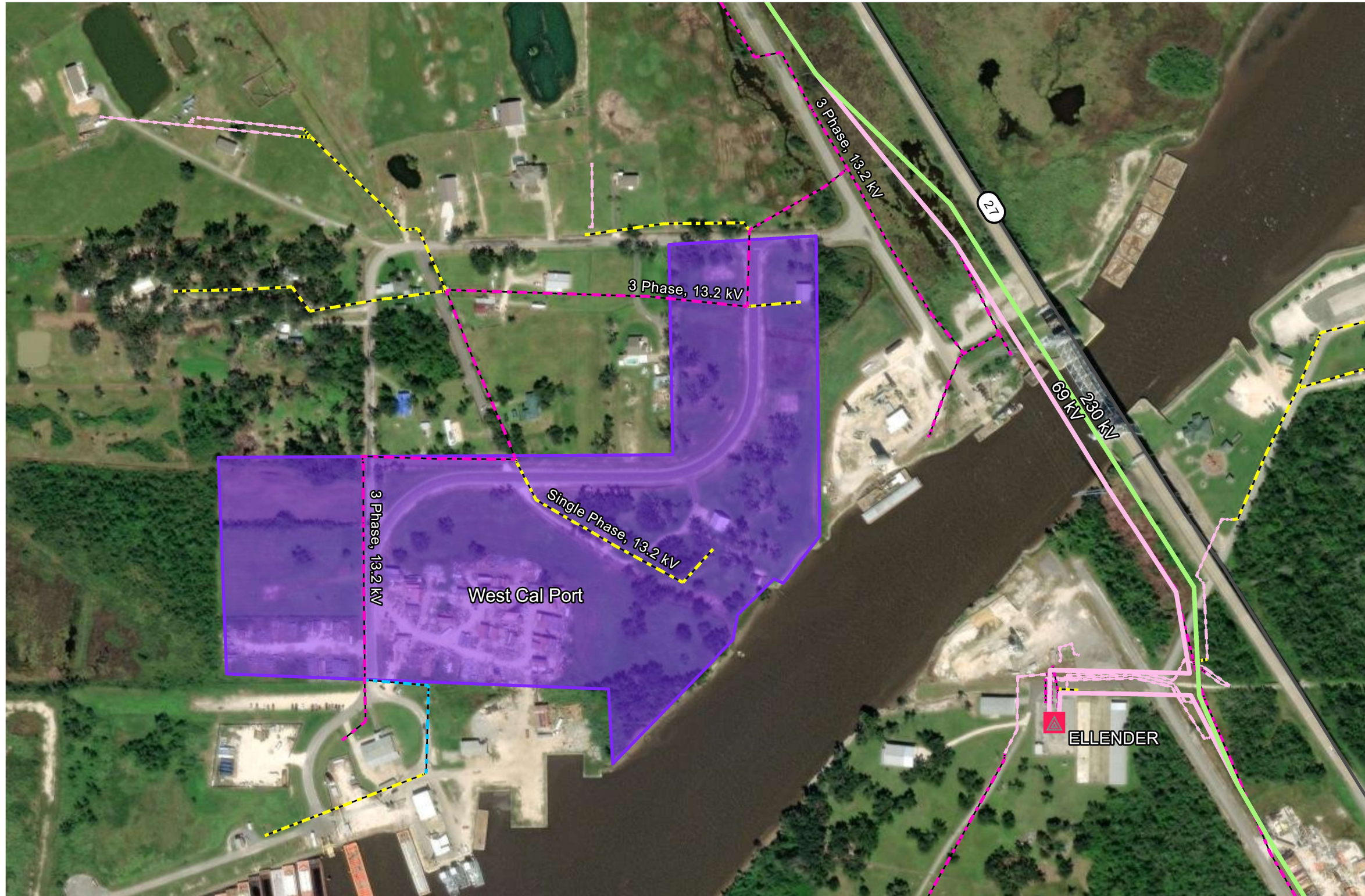



# WEST CAL PORT



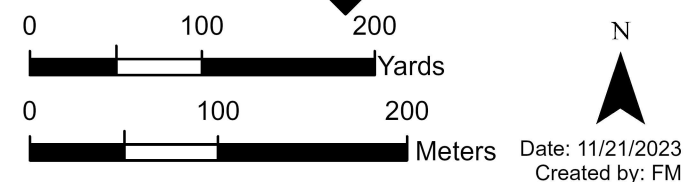
### LEGEND

-  Entergy Substation
- Entergy Transmission**
  -  230 kV
  -  69 kV
- Entergy Distribution**
  -  3 Phase, Overhead
  -  2 Phase, Overhead
  -  Single Phase, Overhead
  -  Underground
- Primary Routes**
  -  State Highway
  -  West Cal Port

### SOURCE

Roads: Census/Tiger database, 2021.  
Electrical Infrastructure: Entergy Services Inc., 2023.

### SCALE



These drawings are provided merely to assist in economic development efforts. The Entergy Companies make no representations or warranties whatsoever regarding the accuracy or completeness of any information contained herein nor the condition or suitability of any properties. Users should direct inquiries about any property to the listing broker for that property.