

# Exhibit N. Sinclair Site Natural Gas Infrastructure Map

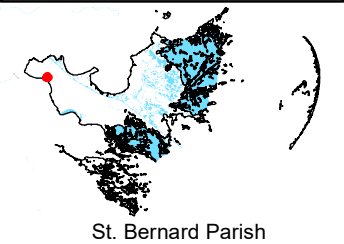
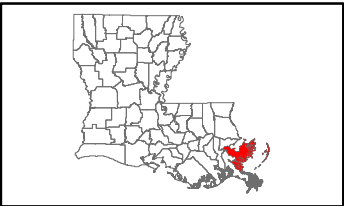




# Sinclair Site Natural Gas Infrastructure Upgrade Map

Natural Gas Infrastructure  
Sinclair Site  
St. Bernard Parish, LA

St. Bernard EDF



St. Bernard Parish

LEGEND

- Sinclair Site Boundary (285.64 Ac. ±)
- Existing Natural Gas Distribution**
  - Existing Atmos Energy Natural Gas Line
- Existing Roadway**
  - 4-Lane State Highway
  - Urban State Highway
  - Local Roads
  - Railroad
  - Stream
  - Waterbody



Date:	10/18/2016
Project Number:	214094
Drawn By:	TMK
Checked By:	JAY

**CSRS**  
IMAGINE SHAPE DELIVER  
6767 Perkins Road Suite 200 Baton Rouge, LA 70808  
Telephone: 225 769-0546 Fax: 225 767-0060  
www.csrsonline.com

P:\214094\GNO Certified Sites Program\Sinclair Site\CAD\GIS templates\GIS\Exhibit M. Sinclair Site Natural Gas Infrastructure Map.mxd

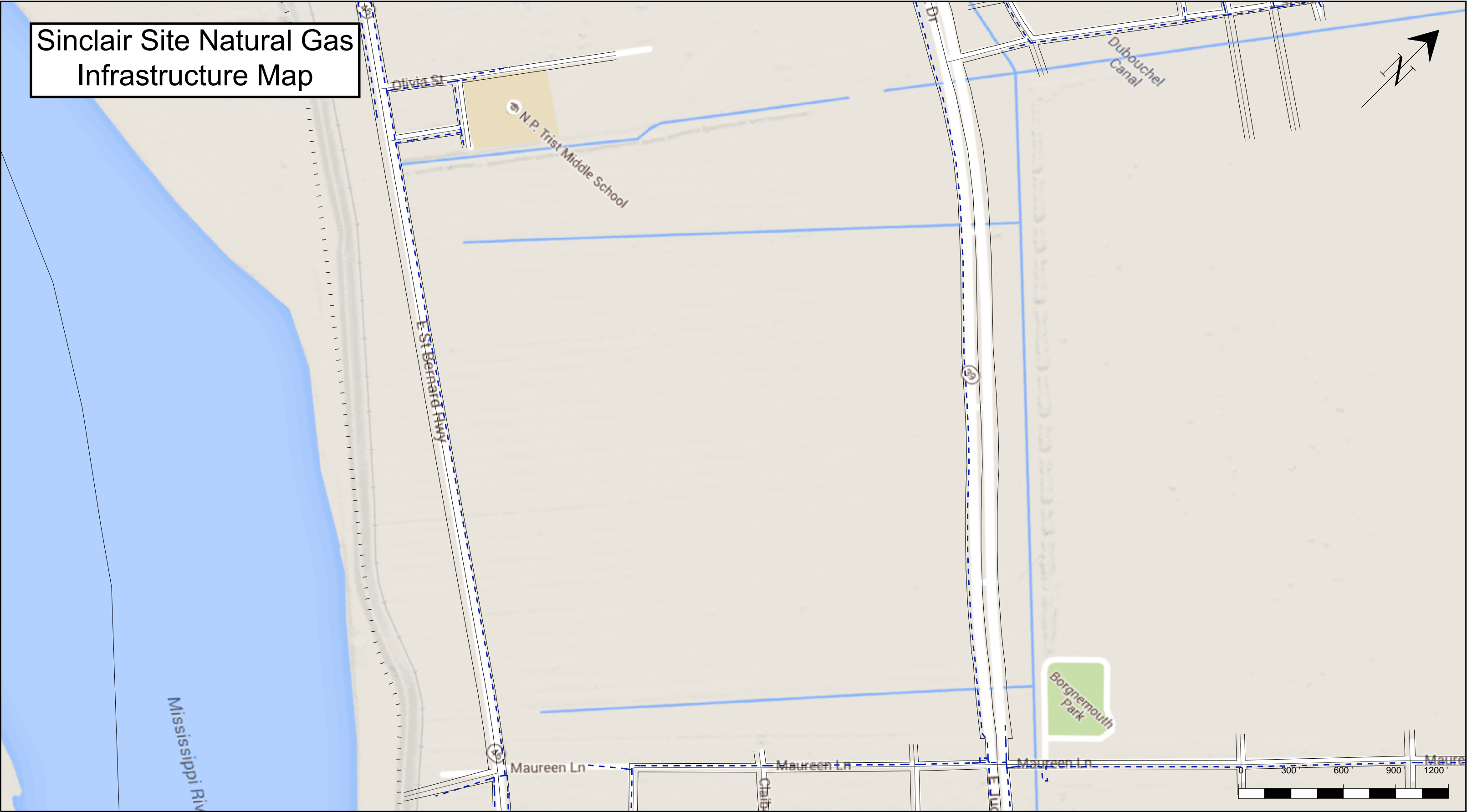
- General Notes:
1. No attempt has been made by CSRS, Inc. to verify site boundary, title, actual legal ownership, deed restrictions, servitudes, easements, or other burdens on the property, other than that furnished by the client or his representative.
  2. Transportation data from 2013 TIGER datasets via U.S. Census Bureau at [ftp2.census.gov/geo/tiger/TIGER2013](http://ftp2.census.gov/geo/tiger/TIGER2013).
  3. Utility information from visual inspection and/or the individual utility operators. Exact field location has not been determined by survey. The lines shown are an approximate representation only and may have been offset for depiction purposes.
  4. 2015 aerial imagery from USDA-APFO National Agricultural Inventory Project (NAIP) and may not reflect current ground conditions.



Scale 1:7,000  
0 375 750 Feet



Sinclair Site Natural Gas  
Infrastructure Map



Gas Utility Map

SHEET 1 OF 1  
CONTACT: Beach, Lawson  
DATE: 06/15/2016  
PHONE: 504-849-4415



Maps, drawings and electronic data (products) are created for the internal purposes of Atmos Energy with on implication of suitability or fitness for the internal use of the recipient. Atmos Energy will make good faith efforts to provide products that are free from error, but does not warrant the accuracy or quality of such products. The locations shown are approximations and are not intended to show exact locations. Products provided to other parties by Atmos Energy are for the internal use of the recipient, and the recipient agrees not to duplicate or distribute the products or any portion of the products to third parties without the prior written permission of Atmos Energy. The recipient further agrees to hold harmless and indemnify Atmos Energy against all claims, costs, expenses and damages resulting from or predicated upon strict liability for personal injuries, death or property damage, on account of any defects in the property provided hereunder.

Legend

- Main.Existing Intermediate Pressure Route
- Main.Existing Medium Pressure Route

