

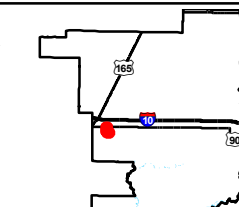
Exhibit K. T.O. Allen Industrial Park South Electrical Distribution Infrastructure Map



T.O. Allen Industrial Park South Electrical Distribution Infrastructure Map

Existing Electric Distribution
Allen Estates South Site
Jefferson Davis Parish, LA

One Acadiana

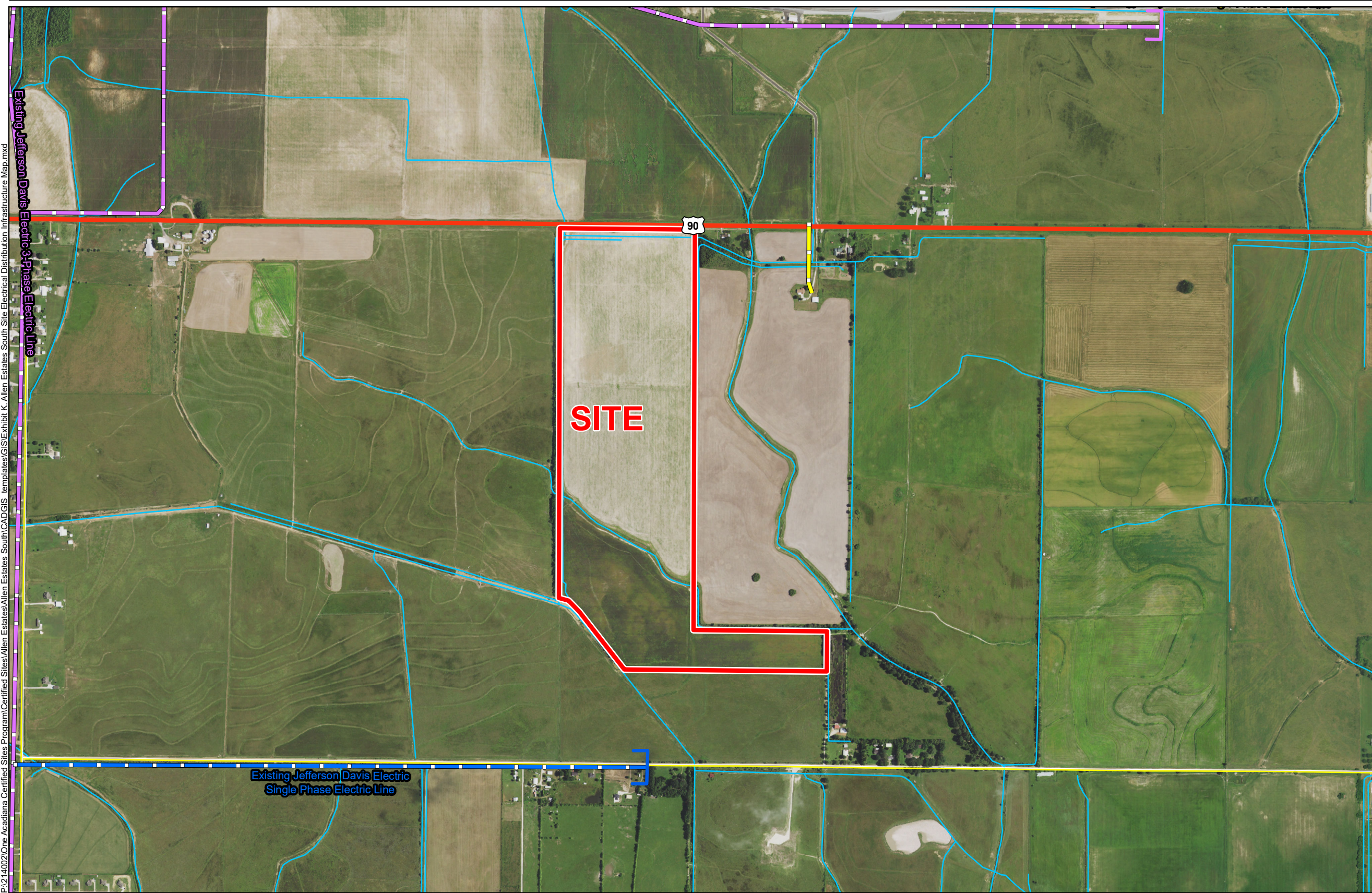


Jefferson Davis Parish

LEGEND

- Site Boundary (142.59 Ac. ±)
- Existing Entergy Corporation Electric Distribution**
- Existing Entergy Corporation Single Phase Electric Line
- Existing Jefferson Davis Electric Distribution**
- Existing Jefferson Davis Electric 3-Phase Electric Line
- Existing Jefferson Davis Electric Single Phase Electric Line
- Existing Roadway**
- US Highway
- Local Roads
- Stream

P:\214002\One Acadiana Certified Sites Program\Certified Sites\Allen Estates\Allen Estates South\CAD\GIS Templates\GIS\Exhibit K-Allen Estates South Site Electrical Distribution Infrastructure Map.mxd



Date:	1/19/2017
Project Number:	214002
Drawn By:	TMK
Checked By:	JAY

- General Notes:
1. No attempt has been made by CSRS, Inc. to verify site boundary, title, actual legal ownership, deed restrictions, servitudes, easements, or other burdens on the property, other than that furnished by the client or his representative.
 2. Transportation data from 2013 TIGER datasets via U.S. Census Bureau at <ftp://ftp2.census.gov/geo/tiger/TIGER2013>.
 3. Utility information from visual inspection and/or the individual utility operators. Exact field location has not been determined by survey. The lines shown are an approximate representation only and may have been offset for depiction purposes.
 4. 2015 aerial imagery from USDA-APFO National Agricultural Inventory Project (NAIP) and may not reflect current ground conditions.



CSRS
IMAGINE SHAPE DELIVER

6767 Perkins Road Suite 200 Baton Rouge, LA 70808
Telephone: 225 769-0546 Fax: 225 767-0060
www.csrsonline.com