

Exhibit Q.

CSX Almonaster Site

Local Product Pipelines Map

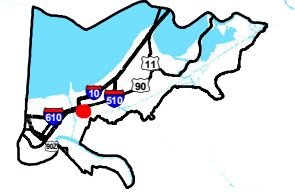


GREATER NEW ORLEANS
INC
REGIONAL ECONOMIC DEVELOPMENT

CSX Almonaster Site Local Product Pipelines Map

CSX Almonaster Site
Orleans Parish, LA

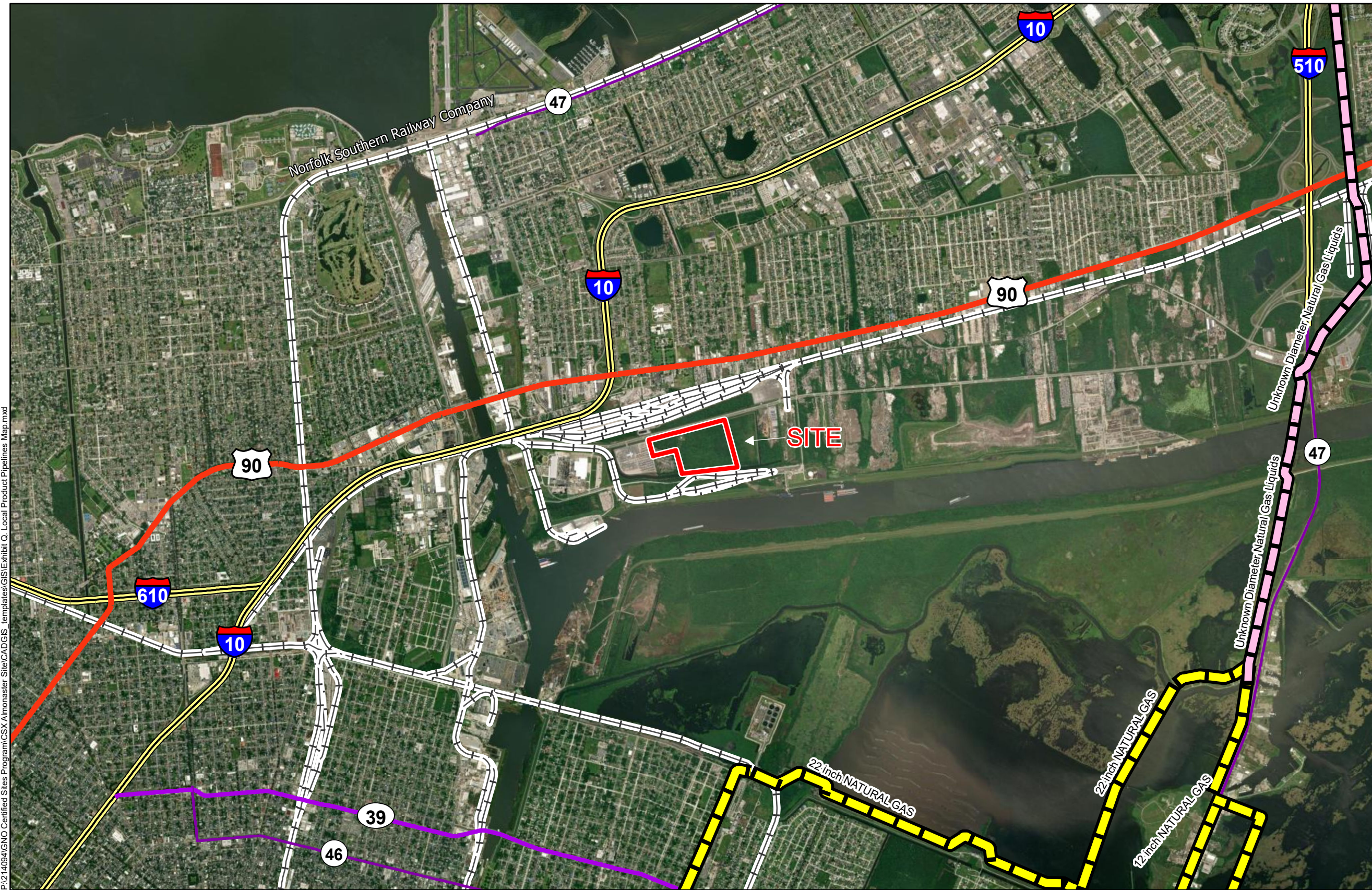
GNO



Orleans Parish

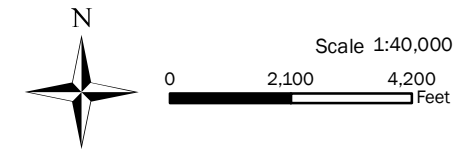
LEGEND

- Site Boundary (73.23± ac.)
- Pipeline Commodity**
- Natural Gas
- Product Service Pipeline
- Existing Roadway**
- Interstate
- US Highway
- 4-Lane State Highway
- Urban State Highway
- Railroad



P:\214094\GNO Certified Sites Program\CSX Almonaster Site\CAD\GIS - templates\GIS\Exhibit Q - Local Product Pipelines Map.mxd

- General Notes:
1. No attempt has been made by CSRS, Inc. to verify site boundary, title, actual legal ownership, deed restrictions, servitudes, easements, or other burdens on the property, other than that furnished by the client or his representative.
 2. Transportation data from 2013 TIGER datasets via U.S. Census Bureau at <ftp://ftp2.census.gov/geo/tiger/TIGER2013>.
 3. Utility information from visual inspection and/or the individual utility operators. Exact field location has not been determined by survey. The lines shown are an approximate representation only and may have been offset for depiction purposes.
 4. 2015 aerial imagery from USDA-APFO National Agricultural Inventory Project (NAIP) and may not reflect current ground conditions.



Date:	4/22/2024
Project Number:	214094
Drawn By:	BMS
Checked By:	EEB

