

Exhibit Q.

Terre Haute Development Local Product Pipelines Map

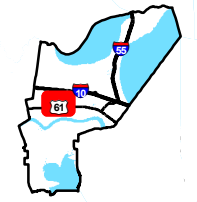


GREATER NEW ORLEANS
INC
REGIONAL ECONOMIC DEVELOPMENT

Terre Haute Development Local Product Pipelines Map

Terre Haute Development
St. John the Baptist
Parish, LA

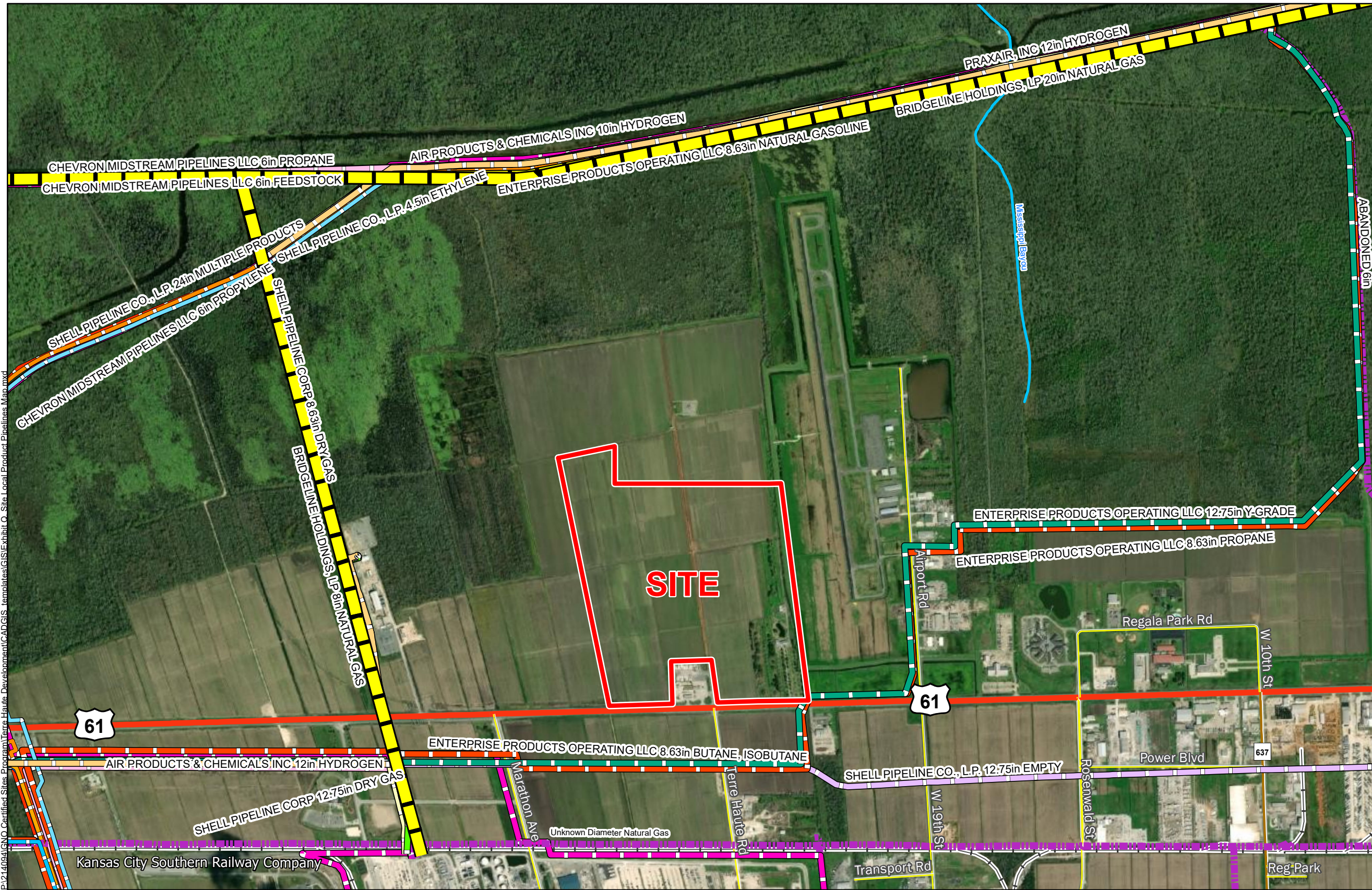
GNO



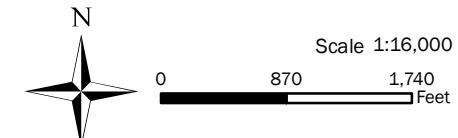
St. John the Baptist Parish

LEGEND

- Enlink Natural Gas Line
- Site Boundary (185.5 Ac.±)
- National Pipeline Mapping System**
- Other
- BUTANE, ISOBUTANE
- BUTANE, PROPANE
- CRUDE OIL
- DRY GAS
- EMPTY
- ETHYLENE
- FEEDSTOCK
- HYDROGEN
- MULTIPLE PRODUCTS
- NATURAL GAS
- NATURAL GASOLINE
- NITROGEN
- PETROLEUM PRODUCT
- PROPANE
- PROPYLENE
- Y-GRADE
- Existing Roadway**
- US Highway
- Rural State Highway
- Local Roads
- Railroad
- Stream



General Notes:
 1. No attempt has been made by CSRS, Inc. to verify site boundary, title, actual legal ownership, deed restrictions, servitudes, easements, or other burdens on the property, other than that furnished by the client or his representative.
 2. Transportation data from 2013 TIGER datasets via U.S. Census Bureau at <ftp://ftp2.census.gov/geo/tiger/TIGER2013>.
 3. Utility information from visual inspection and/or the individual utility operators. Exact field location has not been determined by survey. The lines shown are an approximate representation only and may have been offset for depiction purposes.
 4. 2015 aerial imagery from USDA-APFO National Agricultural Inventory Project (NAIP) and may not reflect current ground conditions.



Date:	2/17/2021
Project Number:	214094
Drawn By:	SEW
Checked By:	EEB

