

Exhibit A. I-12 Industrial Site Color Aerial Photo Map

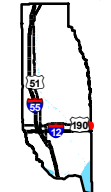
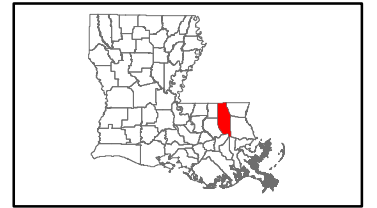


CSRS

I - 12 Industrial Site Color Aerial Photo Map

I - 12 Industrial Site
Tangipahoa Parish, LA

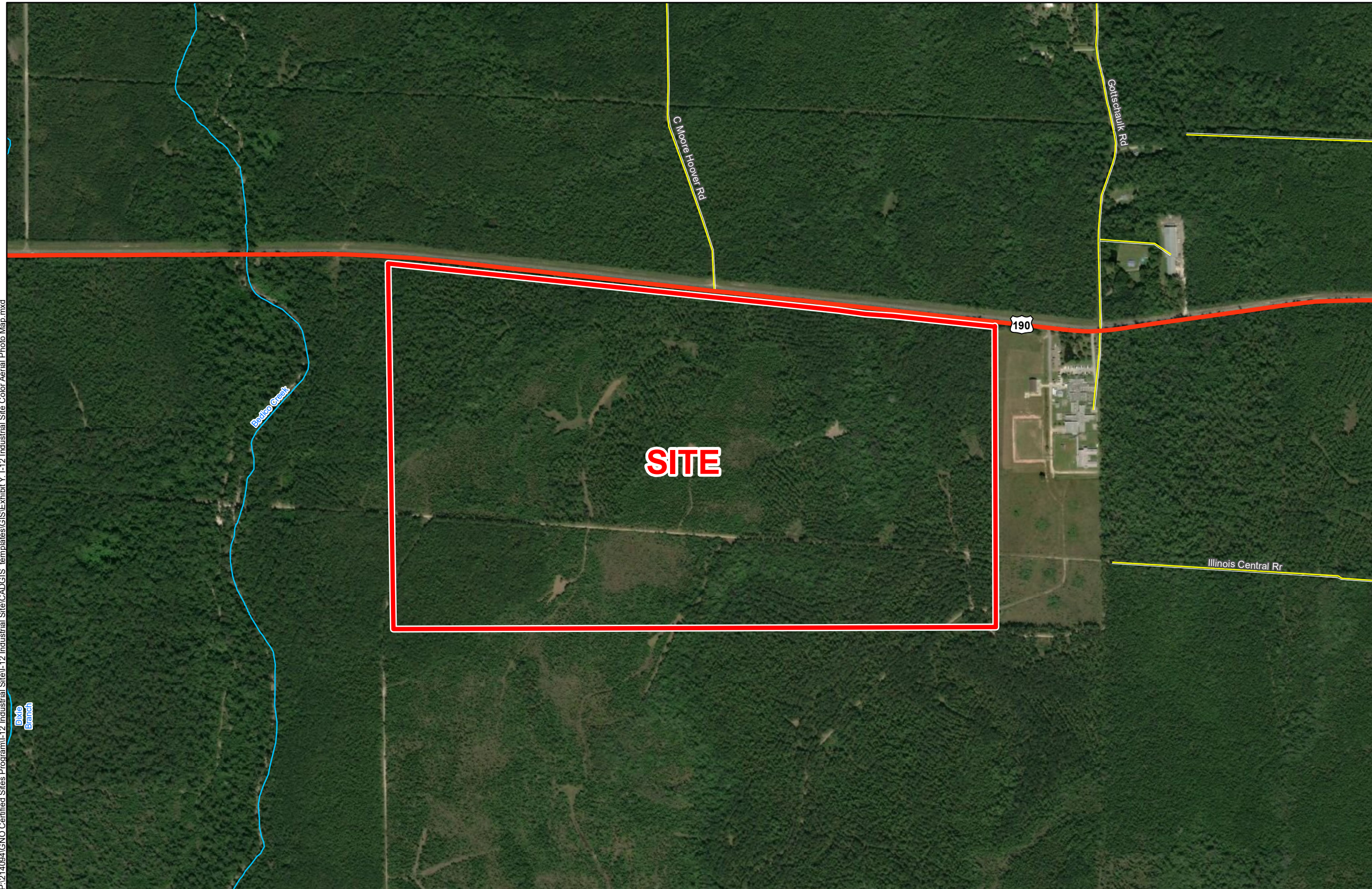
GNO



Tangipahoa Parish

LEGEND

- Site Boundary (257.99 Ac.±)
- Major Roads**
- Existing Roadway**
- Interstate
- US Highway
- 4-Lane State Highway
- Urban State Highway
- Rural State Highway



P:\214094\GNO Certified Sites Program\L12 Industrial Site\L12 Industrial Site\CAD\GIS templates\GIS\Exhibit Y. I-12 Industrial Site Color Aerial Photo Map.mxd

Duke
Blanch

General Notes:

1. No attempt has been made by CSRS, Inc. to verify site boundary, title, actual legal ownership, deed restrictions, servitudes, easements, or other burdens on the property, other than that furnished by the client or his representative.
2. Transportation data from 2013 TIGER datasets via U.S. Census Bureau at <ftp://ftp2.census.gov/geo/tiger/TIGER2013>.
3. 2015 aerial imagery from USDA-APFO National Agricultural Inventory Project (NAIP) and may not reflect current ground conditions.



Scale 1:9,000
0 480 960 Feet



Date:	5/2/2019
Project Number:	214094
Drawn By:	DWC
Checked By:	EEB

CSRS
IMAGINE SHAPE DELIVER
6767 Perkins Road Suite 200 Baton Rouge, LA 70808
Telephone: 225 769-0546 Fax: 225 767-0060
www.csrsonline.com