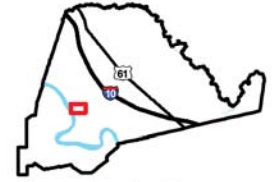


# Exhibit T. Parks Geismar Site Soils Conservation Service Map

NRCS Soils Map  
Parks Geismar Site  
Ascension Parish, LA

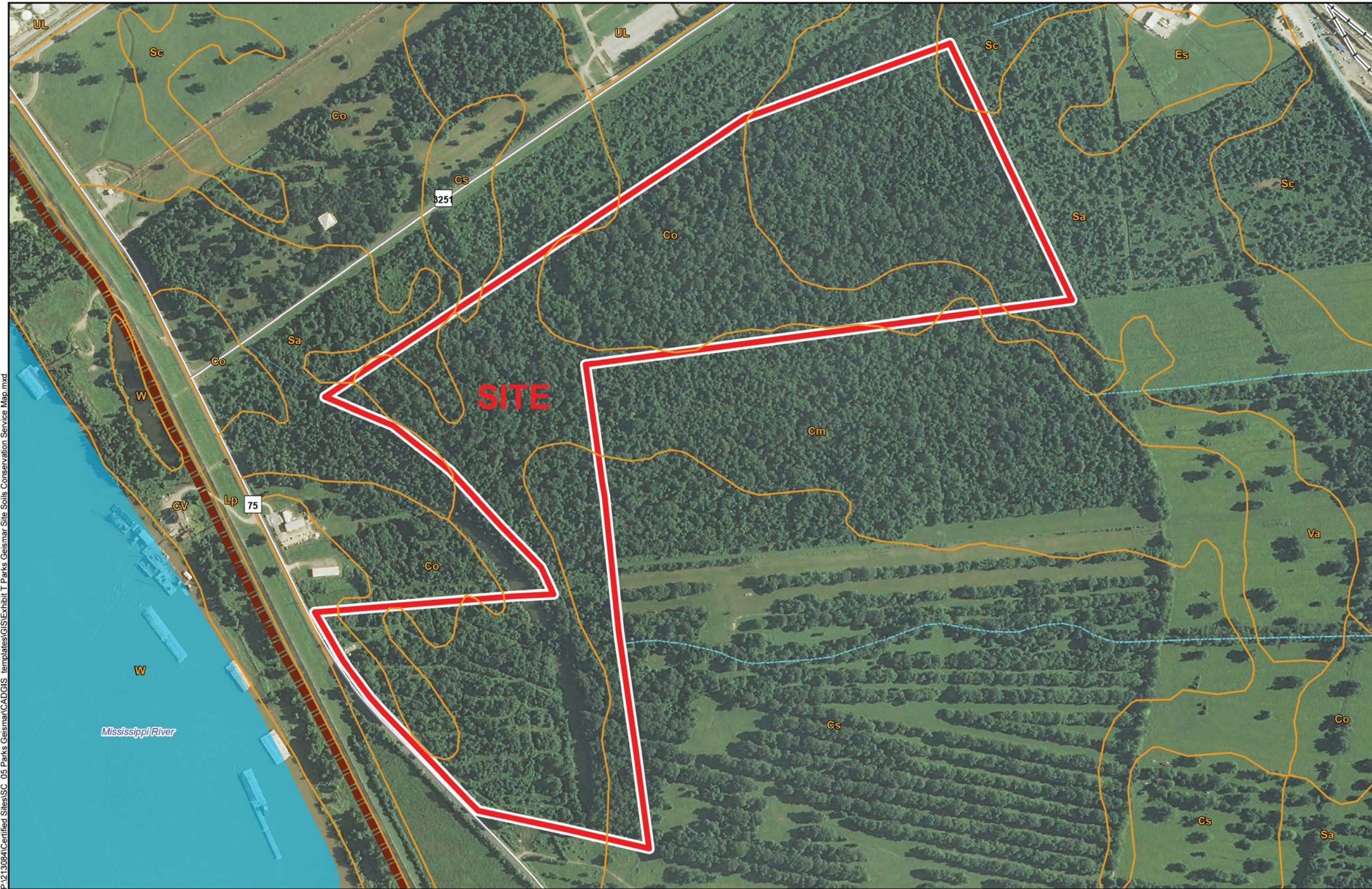
AEDC



Ascension Parish

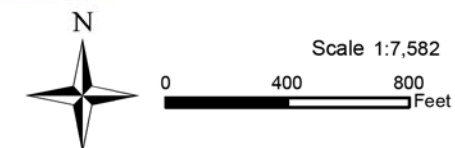
LEGEND

- Site Boundary (183.51 Acres +/-)
- Soil Type**
- See Soil Report for Definitions
- Existing Roadway**
- Rural State Highway
- Railroad
- Levee
- Canal or Ditch
- Stream or River
- Waterbody



P:\213084\Certified Sites\SC\_05 Parks Geismar\CAD\GIS\_templates\GIS\Exhibit T Parks Geismar Site Soils Conservation Service Map.mxd

- General Notes:
1. No attempt has been made by CSRS, Inc. to verify site boundary, title, actual legal ownership, deed restrictions, servitudes, easements, or other burdens on the property, other than that furnished by the client or his representative.
  2. Transportation data from 2013 TIGER datasets via U.S. Census Bureau at [ftp://ftp2.census.gov/geo/tiger/TIGER2013](http://ftp2.census.gov/geo/tiger/TIGER2013).
  3. Soils data from USDA SSURGO website: <http://websoilsurvey.sc.egov.usda.gov/App/WebSoilSurvey.aspx>.
  4. 2013 aerial imagery from USDA-APFO National Agricultural Inventory Project (NAIP) and may not reflect current ground conditions.



Date: 12/16/2014  
Project Number: 213084.20.005  
Drawn By: MAT  
Checked By: TMG

