

Exhibit S. Angel Ranch Site Soils Conservation Service Map

NRCS Soils Map
Angel Ranch Site
Pointe Coupee Parish, LA

BRAC

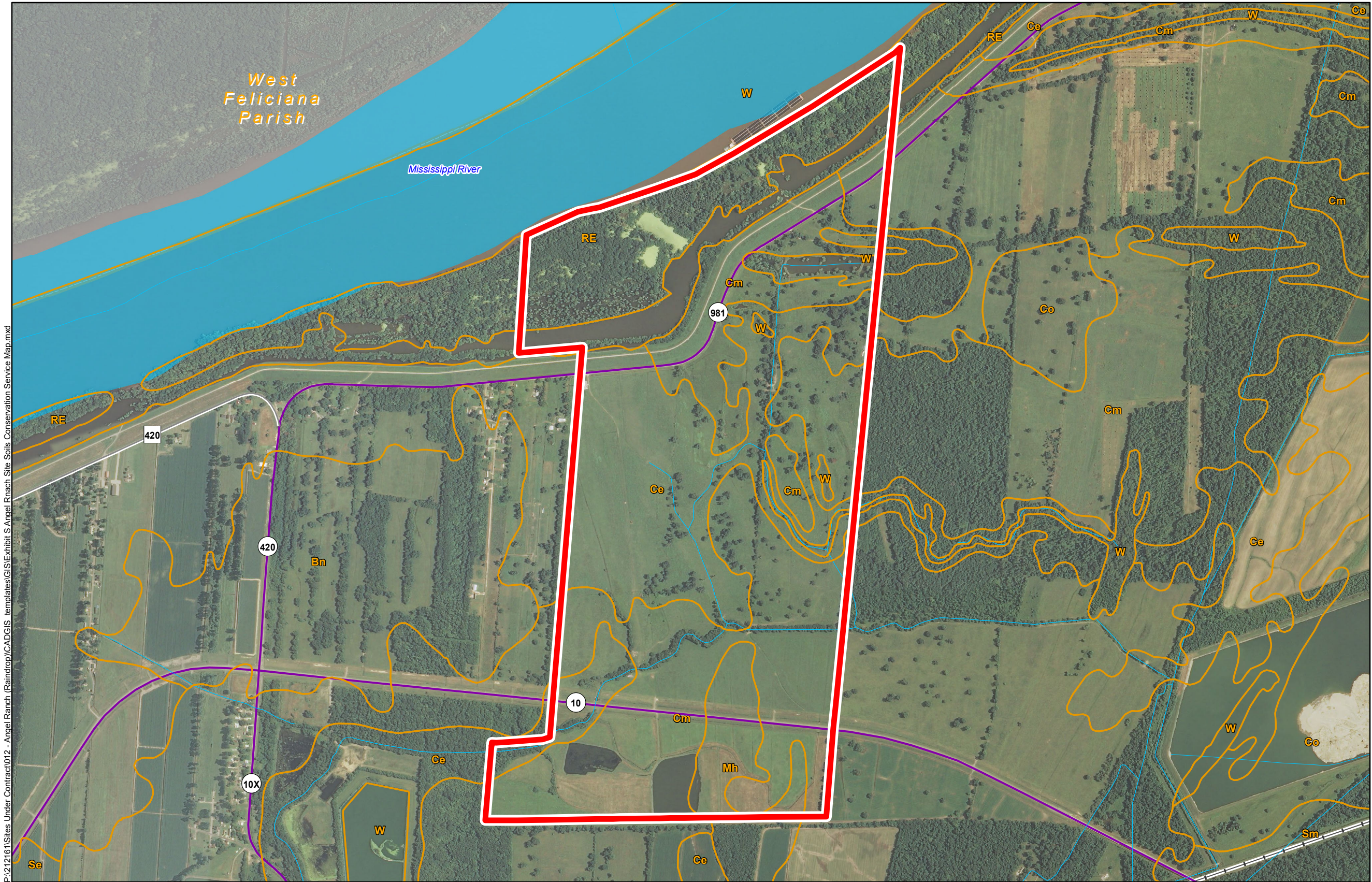


Ascension Parish

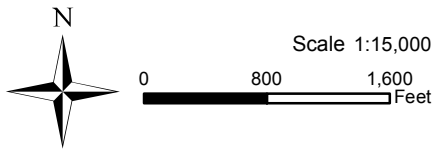
LEGEND

- Site Boundary (731.56 Acres +/-)
- Soil Type
 - See Soil Report for Definitions
- Existing Roadway
 - Urban State Highway
 - Rural State Highway
 - Railroad
 - Stream or River
 - Waterbody
 - Parish Boundary

P:\212161\Sites Under Contract\012 - Angel Ranch (Raindrop)\CADGIS templates\GIS\Exhibit S Angel Ranch Site Soils Conservation Service Map.mxd



- General Notes:
1. No attempt has been made by CSRS, Inc. to verify site boundary, title, actual legal ownership, deed restrictions, servitudes, easements, or other burdens on the property, other than that furnished by the client or his representative.
 2. Transportation data from 2013 TIGER datasets via U.S. Census Bureau at ftp2.census.gov/geo/tiger/TIGER2013.
 3. Soils data from USDA SSURGO website: <http://websoilsurvey.sc.egov.usda.gov/App/WebSoilSurvey.aspx>.
 4. 2013 aerial imagery from USDA-APFO National Agricultural Inventory Project (NAIP) and may not reflect current ground conditions.



Baton Rouge Area Chamber.	
Date:	10/28/2014
Project Number:	212161.20.012
Drawn By:	MMS
Checked By:	TMG

CSRS
IMAGINE SHAPE DELIVER
6767 Perkins Road Suite 200 Baton Rouge, LA 70808
Telephone: 225 769-0546 Fax: 225 767-0060
www.csrsonline.com