

JEFFERSON PARISH ECONOMIC DEVELOPMENT COMMISSION

# CHURCHILL TECHNOLOGY & BUSINESS PARK

A 500-acre master-planned business park in the Greater New Orleans region





**PARK & ARTS WALK**

**MIXED USE DEVELOPMENT**

**PAVILION**

**PLAYGROUND**

**FUTURE HOTEL**

**LAWN**

**PARKING**

**CLOSEABLE STREET**

**EVENTS PLAZA**

# CHURCHILL PARK

## QUICK FACTS

- 480 acres of the last remaining undeveloped, levee-protected land in the New Orleans MSA
- Public and private ownership
- 25 minutes from downtown New Orleans and Louis Armstrong New Orleans International Airport
- Master-planned, with incentives available
- Proximity to major employment centers like Elmwood and Avondale Marine
- Located within hurricane protection system and no history of flooding



# CHURCHILL PARK

## CURRENT TENANTS

- ❑ **JEDCO Administrative Offices and Conference Center:** headquarters for the Jefferson Parish Economic Development Commission and 8,000 sq.-ft. conference center event facilities.
- ❑ **Patrick F. Taylor Science & Technology Academy:** an A-rated magnet middle and high school emphasizing STEAM education, ranked #2 state-wide.
- ❑ **Delgado River City Campus and Advanced Manufacturing Center of Excellence:** newest addition to the Delgado Community College system focusing on advanced manufacturing around the maritime and automotive industries. Has launched several successful workforce training partnerships with area employers.



# CHURCHILL PARK

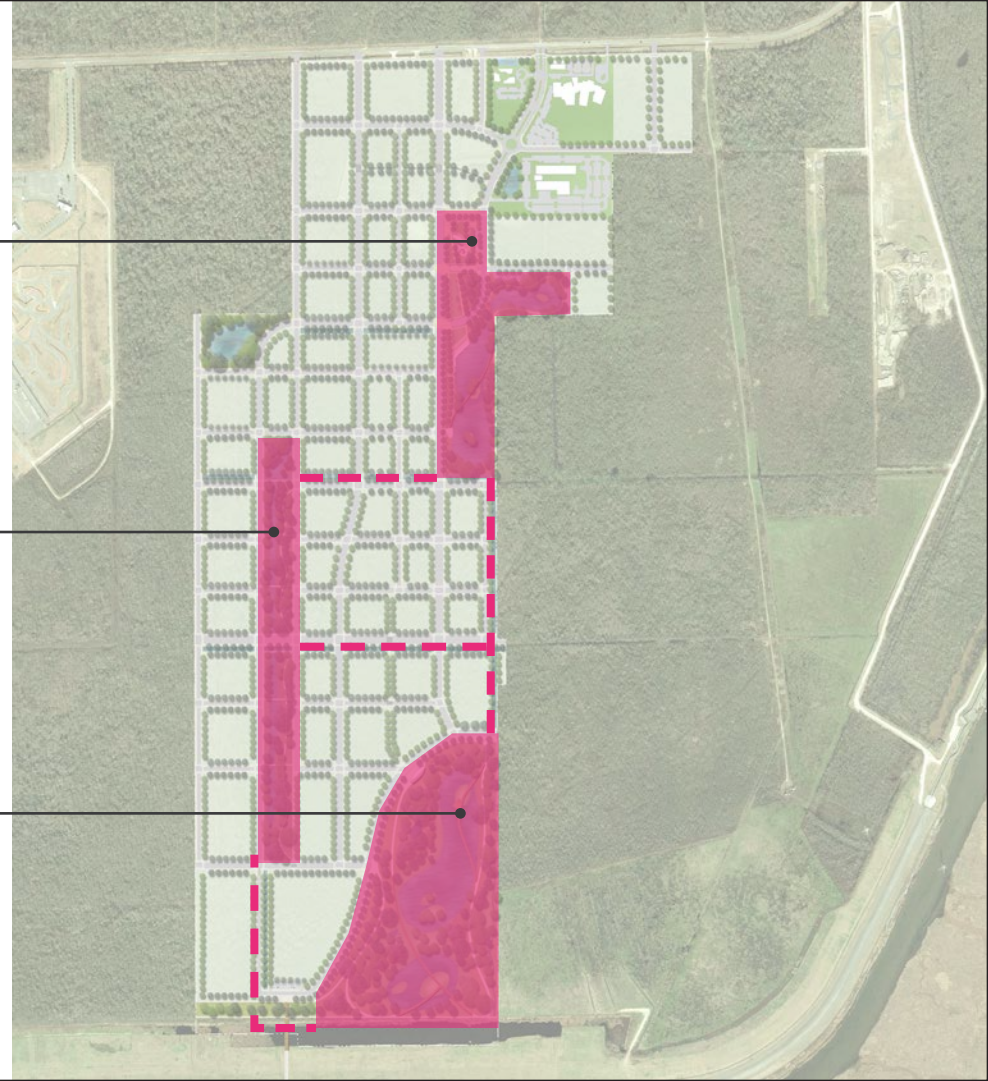
## FRAMEWORK PLAN

- Total Acreage: 486.62
- Developable Acres: 228.06
- Acres of ROW: 108.38
- Acres of Open Space: 118.23
  - *Acres of Pond: 32.95*

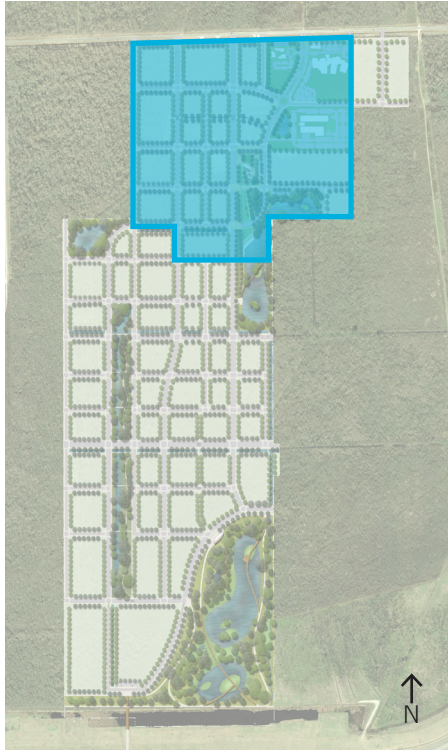
CENTRAL OPEN SPACE

WETLANDS WALK

PRESERVE & POND









# PHASE 1



# CHURCHILL PARK

## PROGRAM OPPORTUNITIES

-  **EDUCATION / RESEARCH**  
170,00 SF
-  **DESTINATION MIXED USE**  
212,000 SF
-  **HOSPITALITY**  
124,000 SF
-  **HEALTHCARE ANCHOR**  
120,000 SF
-  **OFFICE / FLEX / HQ / R&D**  
680,000 SF
-  **EXISTING BUILDING**



# CHURCHILL PARK

## TARGETED USES



FOOD, BEVERAGE,  
FISHING, AND SEAFOOD



IT SYSTEMS  
AND PRODUCTS



HEALTHCARE



WATER TRANSPORTATION,  
DISTRIBUTION & LOGISTICS



WATER, COASTAL, AND  
ENVIRONMENTAL INDUSTRIES

### FLEX SPACE

Food Incubator

Commercial/  
Community  
Kitchen

Brewery

Distillery

### EDUCATION & INSTITUTION

Food &  
Agriculture  
Research

Water  
Planning and  
Management

Research  
Consortium

Green  
Infrastructure  
Piloting &  
Demonstration

### OFFICE

Logistics &  
Customs

Maritime R&D

Architecture,  
Engineering, &  
Construction  
Firms

Healthcare  
Service  
Providers

Medical R&D

Tech & IT

### COMMERCIAL

Health &  
Wellness

Tech Product  
Sales

Hospitality

Grocery

Restaurant

### RESIDENTIAL

Single-Family  
Attached /  
Townhomes

Mixed-Use  
Multifamily

### CIVIC

Town Center

Events Center

Regional  
Recreation





**MIXED USE DEVELOPMENT**

**RESIDENTIAL OR OFFICE  
DEVELOPMENT**

**NATURALIZED CANAL**



**PARK FRONT DEVELOPMENT**

**INTERPRETIVE AREA**

**BOARDWALK**

**WETLAND HABITAT**

**FUTURE LSED BALLPARKS**

**NOLA MOTORSPORTS**

**NICOLLE BLVD.**

**JEDCO OFFICE**

**PATRICK  
F. TAYLOR  
ACADEMY**

**FUTURE HOTEL**

**MIXED USE**

**DCC RIVER  
CITY CAMPUS**

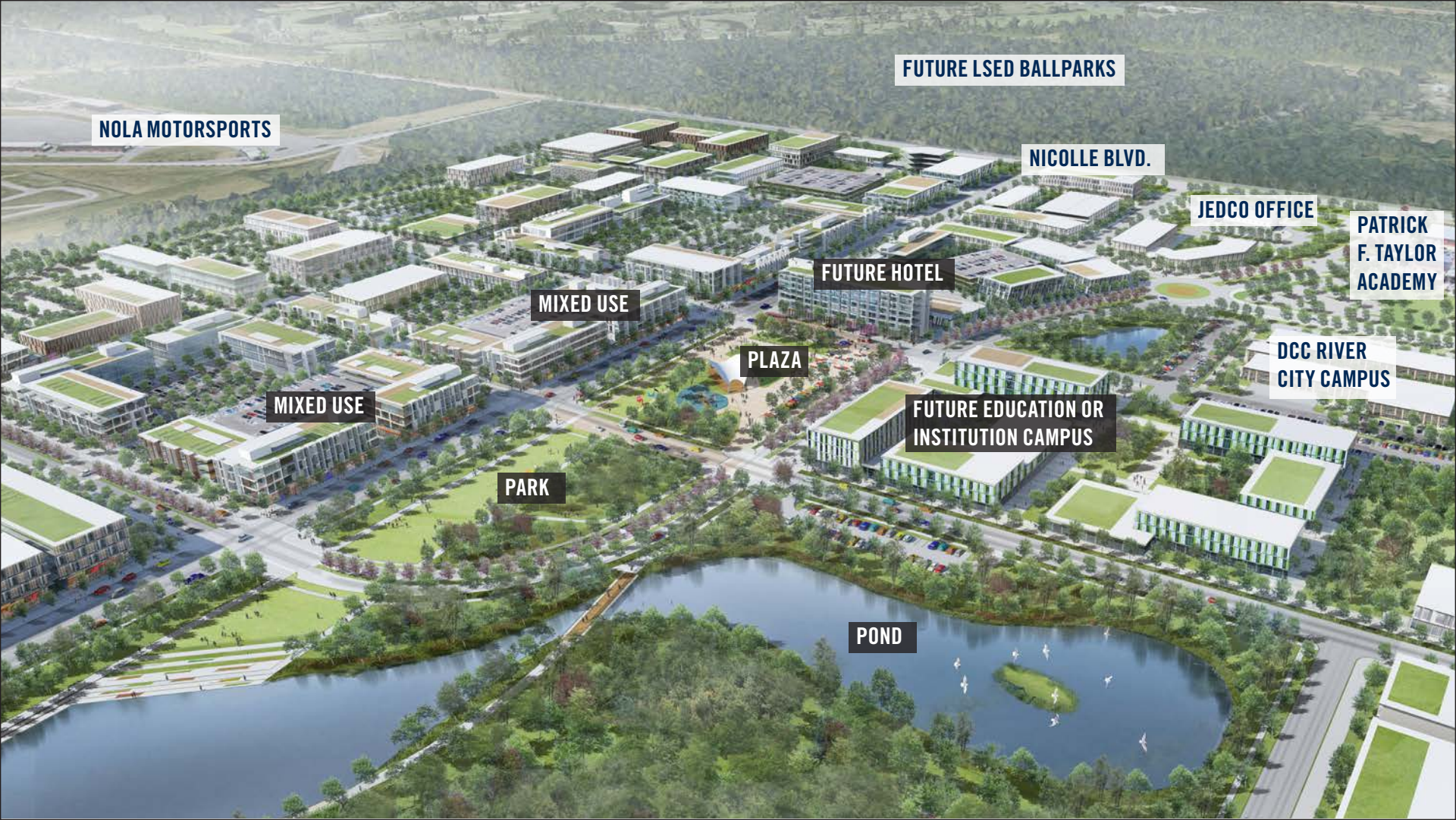
**MIXED USE**

**PLAZA**

**FUTURE EDUCATION OR  
INSTITUTION CAMPUS**

**PARK**

**POND**





# JEDCO

Jefferson Parish Economic Development Commission

## CONTACT JEDCO WITH QUESTIONS OR INTEREST

Lacey Bordelon  
Vice President & COO  
(504) 875-3919  
[lbordelon@jedco.org](mailto:lbordelon@jedco.org)

Janet R. Galati, MPA  
Director, Industry Recruitment  
(504) 875-3940  
[jgalati@jedco.org](mailto:jgalati@jedco.org)

Visit [www.churchilltechpark.org](http://www.churchilltechpark.org) for more information