

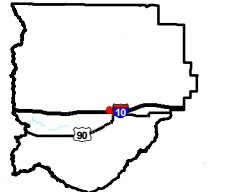
Exhibit T. Bratton Family Farms U.S.  
Geological Survey Quad Map



# Bratton Family Farms U.S. Geological Survey Quad Map


Bratton Family Farms  
Site  
Acadia Parish, LA

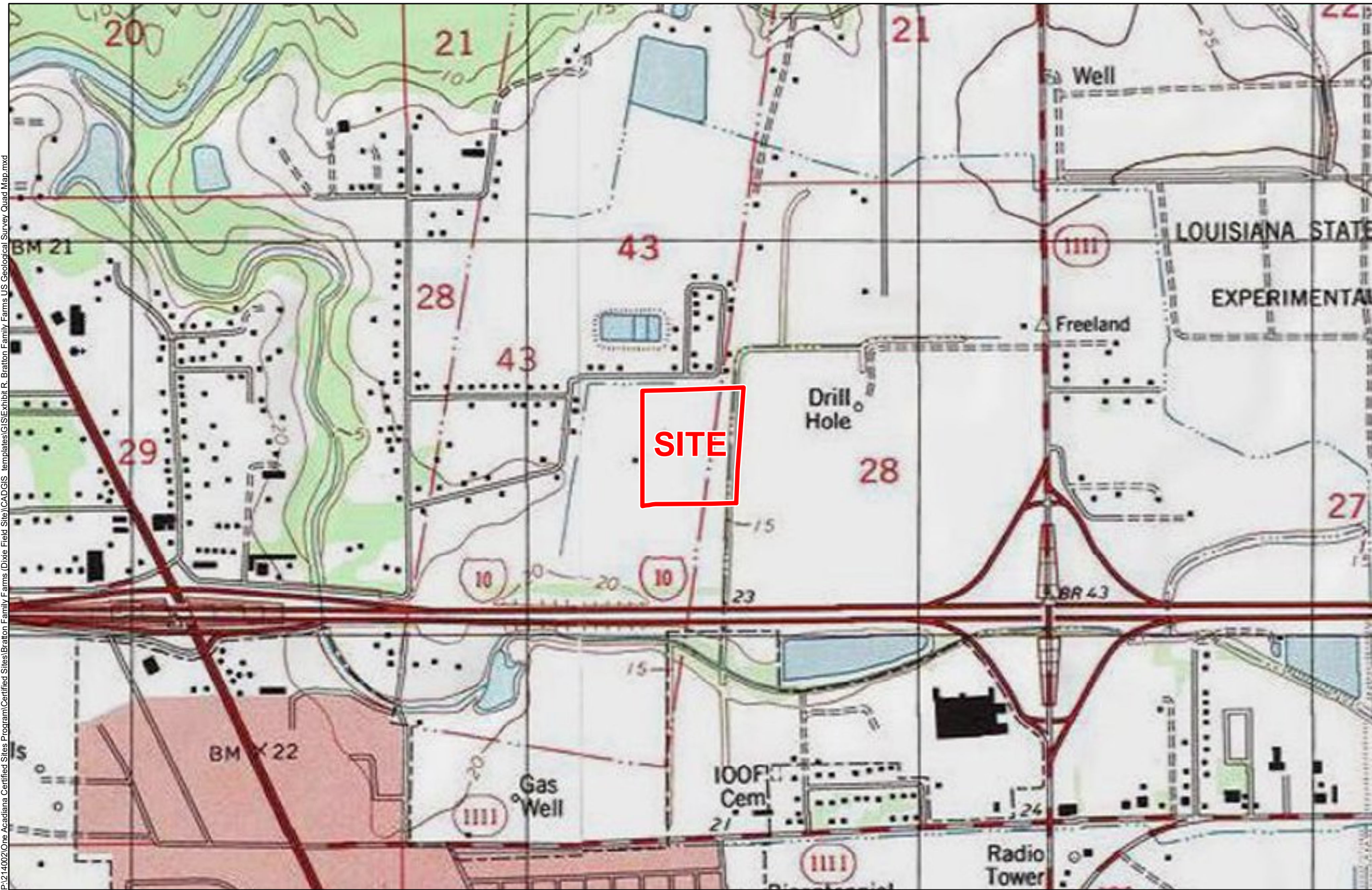
One Acadiana



Acadia Parish

LEGEND

 Site Boundary



P:\214002\One Acadiana Certified Sites Program\Certified Sites\Bratton Family Farms (Dixie Field Site)\CAD\GIS templates\GIS\Exhibit R. Bratton Family Farms US Geological Survey Quad Map.mxd

General Notes:

1. No attempt has been made by CSRS, Inc. to verify site boundary, title, actual legal ownership, deed restrictions, servitudes, easements, or other burdens on the property, other than that furnished by the client or his representative.
2. Topo data and symbologies from USDA NRCS site <http://datagateway.nrcs.usda.gov/GDGOrder.aspx> as created by USDA/NRCS National Geospatial Center of Excellence "USDA-NRCS-NCGC Digital Raster Graphic MrSID Mosaic".



Scale 1:10,000  
0 530 1,060 Feet



Date:	3/23/2018
Project Number:	214002
Drawn By:	AMB
Checked By:	JAY

**CSRS**  
IMAGINE SHAPE DELIVER  
6767 Perkins Road Suite 200 Baton Rouge, LA 70808  
Telephone: 225 769-0546 Fax: 225 767-0060  
[www.csrsone.com](http://www.csrsone.com)