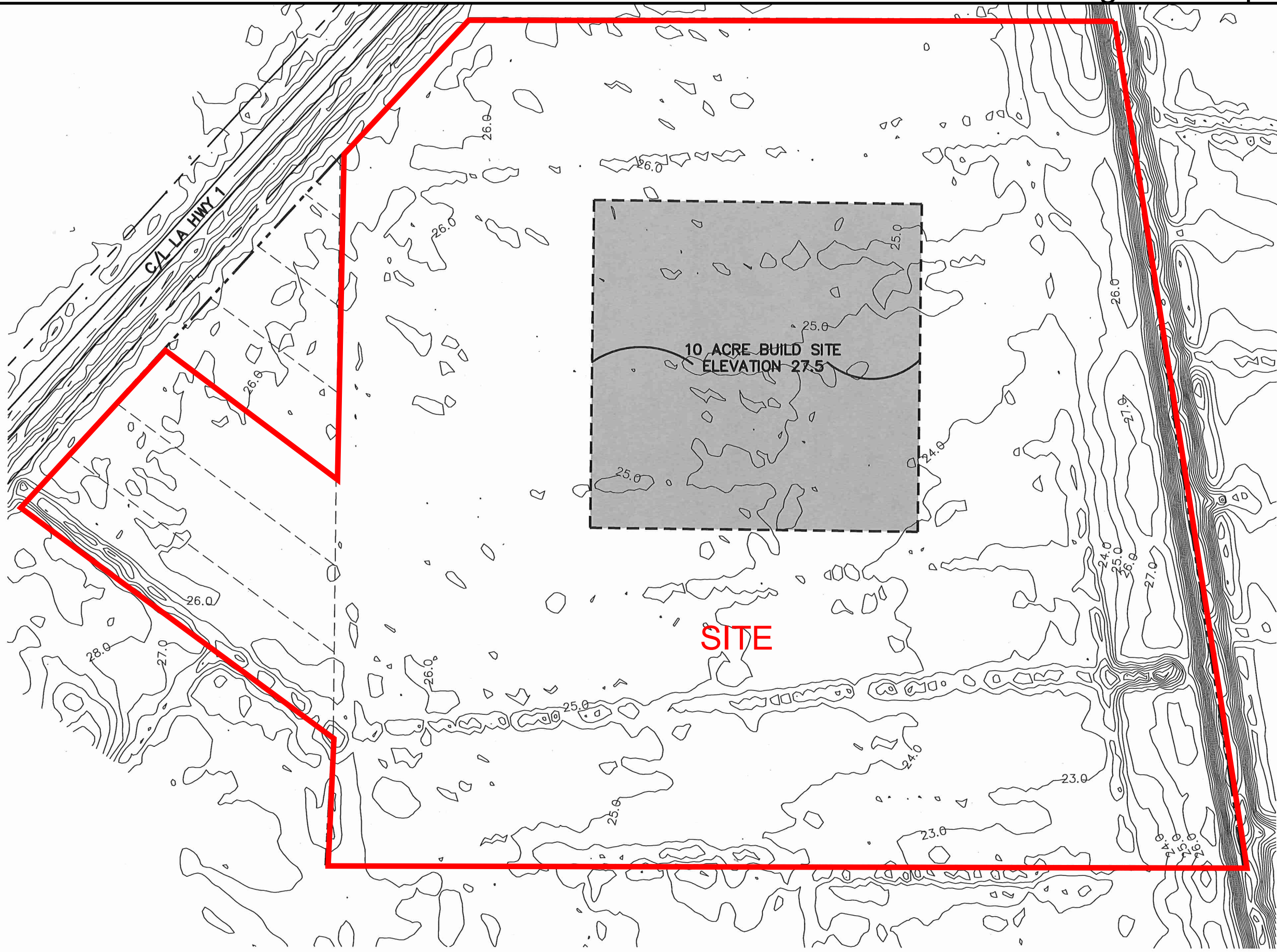


Exhibit B. New Roads Industrial Park LIDAR FEMA Flood Plain Mitigation Map

CONTOUR NOTE:
Contours shown are approximate only and are from 1999 Lidar Data supplied by the LSU GIS Lab. No field verification has been made of this Lidar Elevation Data. No site design or building design shall be based on these approximate contours.

LEGEND:

- ■ ■ ■ — Approximate Site Limits
- 28.0 — Contour Line
- █ Proposed Build Site



**B.R.A.C (POINTE COUPEE PARISH)
COMPILED PLAT SCHEMATIC**

SCHEMATIC/PRELIMINARY DOCUMENT/PLAT NOTE:
This Proposed, Schematic or Preliminary Document is for REVIEW PURPOSES ONLY AND IS SUBJECT TO REVISION. This Proposed, Schematic or Preliminary Document MAY NOT AND SHOULD NOT BE USED FOR TRANSACTIONS, INCLUDING, BUT NOT LIMITED TO: CONSTRUCTION, BIDDING, RECORDATION, CONVEYANCE, SALES, AS THE BASIS FOR THE ISSUANCE OF A PERMIT, OR THE BASIS FOR PLACING A MONETARY VALUE ON THIS PROJECT/PROPERTY. Dimensions and Acreage shown do not reflect actual field work and are subject to change and were determined by use of reference information available to Patin Engineers and Surveyors, Inc. at the time of preparing this PROPOSED, SCHEMATIC OR PRELIMINARY DOCUMENT.

This Plat may not be used in any other way or form without the express written permission of Patin Engineers & Surveyors, Inc. Use for any other purpose shall be at user's sole risk without any liability to Patin Engineers & Surveyors, Inc. Any Use or Revisions made to this drawing without the written authorization of Patin Engineers & Surveyors, Inc. WILL VOID THIS PLAT.



4463 LA. HWY. 1 SOUTH,
SUITE F
PORT ALLEN, LA 70767
OFFICE: (225) 387-2167
FAX: (225) 388-9006