

Standard Notes:

The servitudes and restrictions shown on this survey are limited to those set forth in the description furnished us, and there is no representation that all applicable servitudes and restrictions are shown hereon. The surveyor has made no attempt to verify title, actual legal ownership, or other burdens on the property.

This survey is in accordance with the applicable standards of practice as stipulated in Title 46, Chapter 29 of the professional and occupational standards, part LXI for professional engineers and land surveyors for a Class "D" survey.

Horizontal Datum: NAD-1983 (Based on CORS)
Projection: Lambert, Louisiana South Zone
Units: U.S. Survey Feet
Bearings are based on the Louisiana State Plane Coordinate System

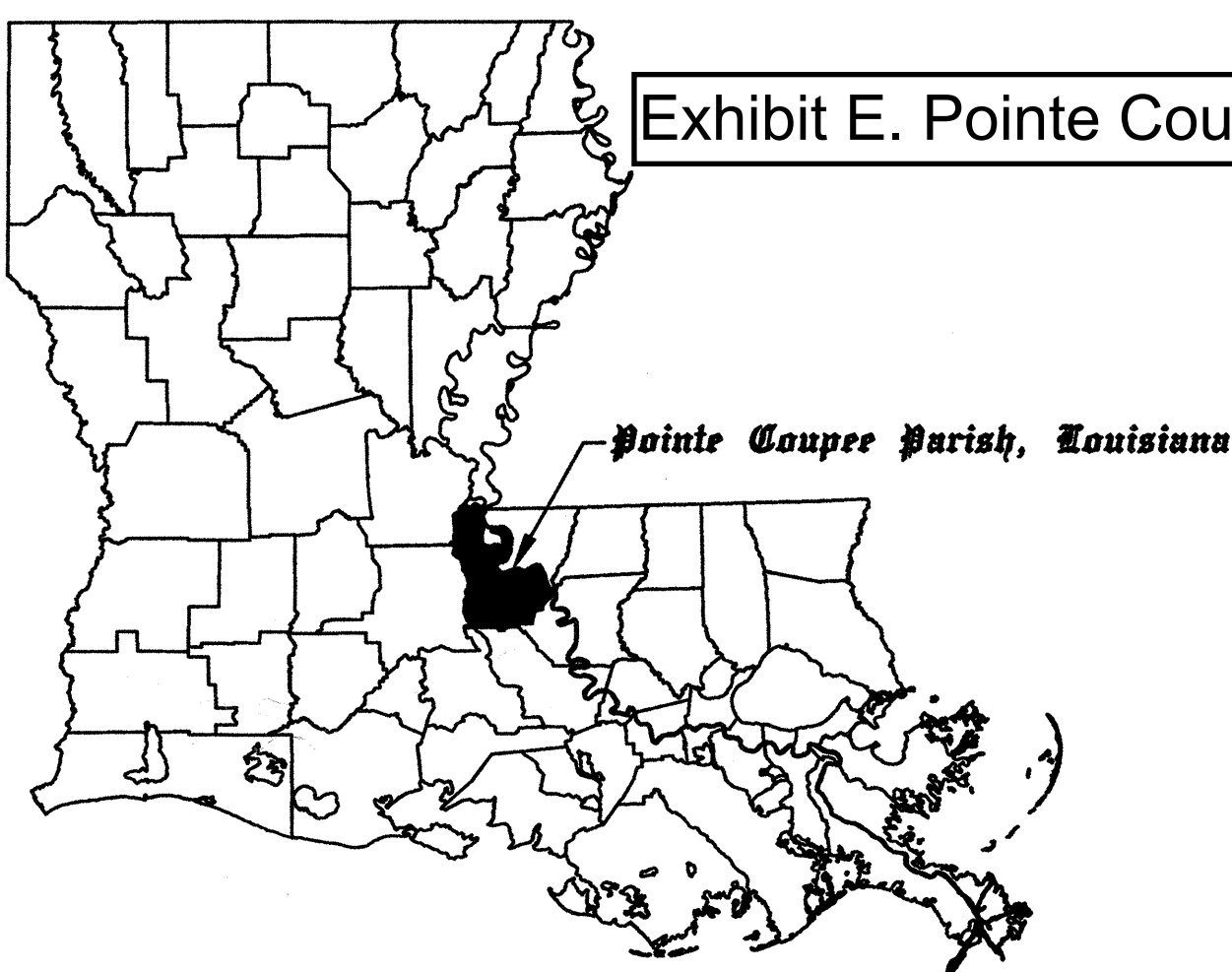
The Bayous shown on this map were digitized using high resolution aerial photography acquired in February 2010. They are not a part of this survey and are approximate.

All section lines shown on this map are approximate.

Water's Edge:

The water's edge was surveyed on July 19, 2012 using RIEGL LMS Q120 Terrestrial Laser Scanner.

Exhibit E. Pointe Coupee Power Park Property Rights-of-way Map

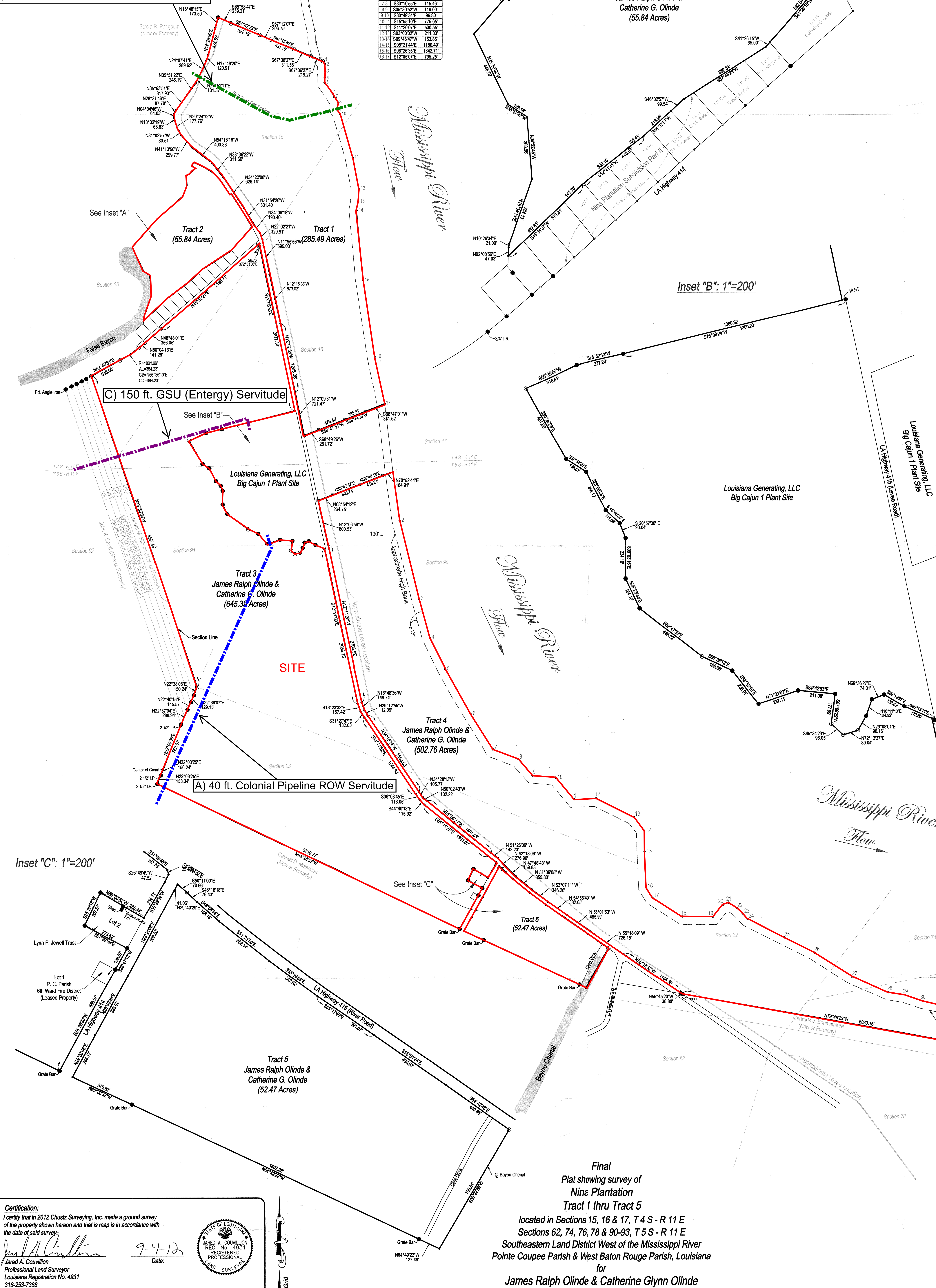


Pointe Coupee Parish, Louisiana

B) 40 ft. Colonial Pipeline ROW Servitude

Tract 1 Water's Edge Traverse

Line	Bearings	Distance
1-2	S33°04'06"E	64.29
2-3	S32°41'35"E	122.74
3-4	S65°45'23"W	111.22
4-5	S00°34'41"W	82.73
5-6	S34°10'09"E	210.15
6-7	S33°06'28"E	72.54
7-8	S33°10'55"E	115.46
8-9	S65°30'25"W	119.00
9-10	S33°49'34"E	66.87
10-11	S15°45'10"E	73.65
11-12	S11°20'00"E	530.55
12-13	S03°10'12"W	211.37
13-14	S00°46'41"W	153.85
14-15	S65°21'44"E	1180.49
15-16	S06°26'35"E	1362.71
16-17	S12°02'01"E	786.29



Reference Maps:

- 1) Property Plat showing Tract I thru Tract IV for J.B. Olinde, Sr. Estate, signed by Daryl B. Patin, R.L.S., dated January 10, 1973, recorded in Map Book 2, Map No. 20 in the Pointe Coupee Parish Clerk of Courts Office.
- 2) Map showing the survey and partition of the Marshall Landry et al Property, being Lot 1 of the partition of the Urania LeLaurie Neff Property, signed by Wallace J. Hargrave, Civil Engineer & Land Surveyor, dated October 17, 1978, recorded in Map Book 4, Map No. 576 in the Pointe Coupee Parish Clerk of Courts Office.
- 3) Map showing the survey of 3 Lots being removed from the Henry Langlois Estate Property, signed by Wallace J. Hargrave, Civil Engineer & Land Surveyor, dated January 7, 1980, recorded in Map Book 4, Map No. 311 in the Pointe Coupee Parish Clerk of Courts Office.
- 4) Plat of Mineral Acreage for Percy V. Rougon, et al, signed by Daryl B. Patin, R.L.S., dated September 3, 1980, recorded in Map Book 4, Map No. 244 in the Pointe Coupee Parish Clerk of Courts Office.
- 5) Map showing the survey of Property of Walter Bueche, signed by Wallace J. Hargrave, Civil Engineer & Land Surveyor, dated May 25, 1984, recorded in Map Book 5, Map No. 24 in the Pointe Coupee Parish Clerk of Courts Office.
- 6) Map showing the survey and subdivision of the Richard S. Major Estate Property, signed by Wallace J. Hargrave, Civil Engineer & Land Surveyor, dated March 17, 1985, recorded in Map Book 4, Map No. 875 in the Pointe Coupee Parish Clerk of Courts Office.
- 7) Map showing the survey of Lot 2, being a portion of a larger tract known as Grand Bay Plantation, signed by Daryl B. Patin, R.L.S., dated November 16, 1989, recorded in Map Book 5, Map No. 317 in the Pointe Coupee Parish Clerk of Courts Office.
- 8) Map showing the survey of Lot A & Lot B, formerly the Henry Langlois Estate Property, by Wallace J. Hargrave, R.L.S., dated March 20, 1989, recorded in Map Book 5, Map No. 324 in the Pointe Coupee Parish Clerk of Courts Office.
- 9) Map showing the survey of Buisse and Olinde Property Line, being the property line between Catherine G. Buisse, et al & Catherine G. Olinde, signed by Joseph Garrett, P.L.S., dated January 18, 1993, recorded in Map Book 5, Map No. 507 in the Pointe Coupee Parish Clerk of Courts Office.
- 10) Final Plat of Nina Plantation Subdivision Part I, a Residential Subdivision, being the Subdivision of Tract COO-II, a tract of land removed from the Nina Plantation, signed by James H. Chustz, Jr., P.L.S., dated June 16, 1999, recorded in Map Book 6, Map No. 189 in the Pointe Coupee Parish Clerk of Courts Office.
- 11) Final Plat of Nina Plantation Subdivision Part II, a Residential Subdivision, being the Subdivision of Tract COO-II, a tract of land removed from the Nina Plantation, signed by James H. Chustz, Jr., P.L.S., dated June 16, 1999, recorded in Map Book 6, Map No. 317 in the Pointe Coupee Parish Clerk of Courts Office.
- 12) Final Plat of Nina Plantation Subdivision Part II, a Residential Subdivision, being the Subdivision of Tract COO-II, a tract of land removed from the Nina Plantation, signed by James H. Chustz, Jr., P.L.S., dated June 16, 1999, revised July 25, 2002, recorded in Map Book 6, Map No. 358 in the Pointe Coupee Parish Clerk of Courts Office.
- 13) Map showing survey of NRCS Wetland Reserve Program Conservation Easement Boundary, by Pyburn & Odum, Inc., signed by Michael P. Mallett, P.L.S., dated February 4, 2003, recorded in Map Book 6, Map No. 446 in the Pointe Coupee Parish Clerk of Courts Office.
- 14) Map showing ALTA/ACSM Survey of Tracts A-1, A-2, B & Lease Site "C", Cajun 1 Site, by Neil-Schaffer, Inc., signed by Gerald W. Middleton, Jr., P.L.S., dated December 22, 2003, recorded in Map Book 6, Map No. 537 in the Pointe Coupee Parish Clerk of Courts Office.
- 15) Map showing the removal of Lot A from the former Wilfred Jarmon Tract, signed by Charles R. St. Romain, R.L.S., dated February 17, 2005, recorded in Map Book 6, Map No. 705 in the Pointe Coupee Parish Clerk of Courts Office.
- 16) Map showing the survey of Lot "A", being removed from the property of Gertrude Bonaventure, signed by Joseph K. Palermo, P.L.S., dated February 21, 2006, recorded in Map Book 6, Map No. 833 in the Pointe Coupee Parish Clerk of Courts Office.
- 17) Map showing the resubdivision of Tract IV of the J.B. Olinde Estate and the Gossard Tract into Tracts JG-1, JG-2, JG-3, SFF-1 & SFF-2, signed by David McRae, P.L.S., dated February 1, 2006, recorded in Map Book 6, Map No. 874 in the Pointe Coupee Parish Clerk of Courts Office.

Tract 4 Water's Edge Traverse

Line	Bearing	Distance
1-2	S37°03'30"E	84.13
2-3	S36°03'00"E	138.27
3-4	S15°44'44"E	681.50
4-5	S00°22'02"E	881.27
5-6	S00°22'02"E	881.27
6-7	S37°03'30"E	717.43
7-8	S36°03'00"E	464.41
8-9	S44°23'32"E	370.81
9-10	S44°51'16"E	391.72
10-11	S37°03'30"E	371.85
11-12	S37°03'30"E	371.85
12-13	S34°13'38"E	120.59
13-14	S34°13'38"E	26.86
14-15	S00°11'17"E	363.02
15-16	S00°11'17"E	363.02
16-17	S37°03'30"E	204.75
17-18	S37°03'30"E	201.30
18-19	S37°03'30"E	61.37
19-20	N35°15'17"E	272.84
20-21	N35°15'17"E	95.98
21-22	S37°03'30"E	173.35
22-23	S46°04'04"E	136.66
23-24	S46°04'04"E	122.10
24-25	S63°20'05"E	701.88
25-26	S37°49'51"E	580.56
26-27	S37°49'51"E	769.28
27-28	S63°20'05"E	684.52
28-29	S37°49'51"E	580.56
29-30	S11°20'00"E	324.22
30-31	S11°20'00"E	498.07
31-32	S06°26'35"E	91.26
32-33	S17°45'05"E	468.39
33-34	S17°45'05"E	565.04
34-35	S18°26'32"E	530.92
35-36	S17°45'05"E	468.39
36-37	S17°45'05"E	565.04
37-38	S18°26'32"E	99.29
38-39	S17°45'05"E	126.20
39-40	S17°45'05"E	122.21
40-41	S12°30'04"E	80.05
41-42	S12°30'04"E	80.05
42-43	S65°00'01"E	143.78
43-44	S65°00'01"E	143.78
44-45	S14°53'08"E	79.51
45-46	S14°53'08"E	79.51
46-47	S45°18'13"E	133.41
47-48	S45°18'13"E	217.85
48-49	S45°18'13"E	374.91