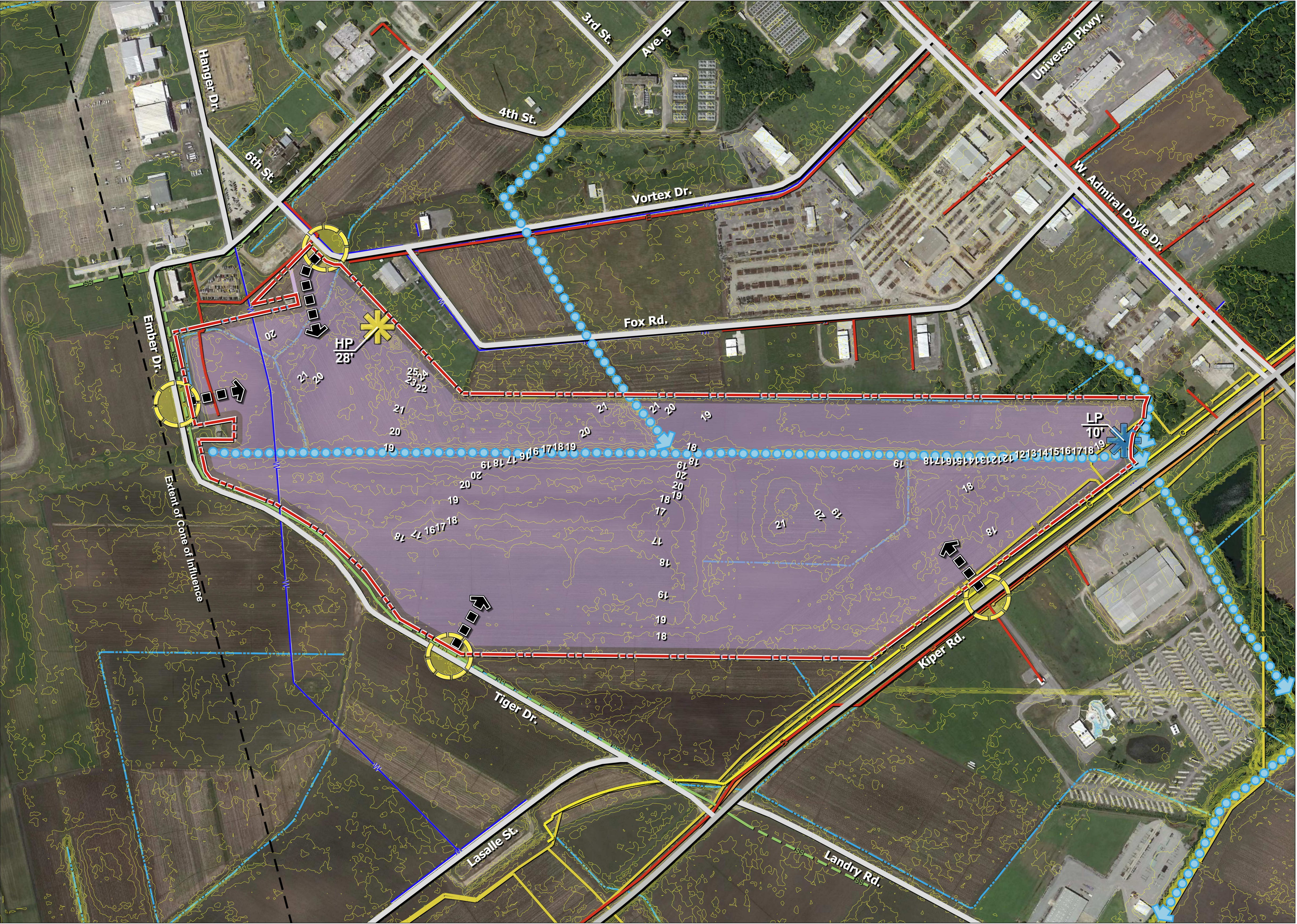


Exhibit II. Acadiana Regional Airport P4 Site Executive Summary & Developable Area

ACADIANA REGIONAL AIRPORT P4 SITE

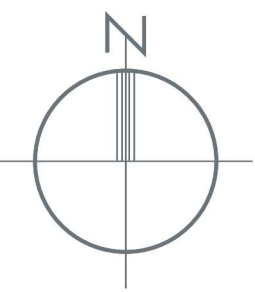


Legend

- Site Boundary (170.28 ± Acres)
- Proposed Developable Area (Total: 169.75 ± Acres)
- Existing Major Road
- Existing Minor Road
- Parish Parcel Data
- Existing Elevation Contours
- Approximate Electrical Line
- Approximate Telecom Line
- Approximate Water Line
- Approximate Gas Line
- Approximate Gas Pipe Line
- Approximate Sanitary Sewer Line
- Site High Point
- Site Low Point
- Proposed Site Access Points
- Proposed Road Improvement
- Existing Drainage Corridor
- Existing Drainage Ditch
- Approximate Extent of Cone of Influence for Acadiana Regional Airport

- Notes:
- The proposed project area has not been verified with a field survey.
 - Elevation data shown is derived from LiDAR via www.atlas.lsu.edu. LiDAR elevations shall be considered preliminary and are for planning purposes only. An on the ground or aerial topographic survey must be conducted to determine actual ground elevations.
 - Further engineering design is required to determine stormwater management requirements.

NOTE:
ILLUSTRATION IS CONCEPTUAL ONLY AND IS SUBJECT TO CHANGE BASED UPON
FURTHER DETAILED ANALYSIS, ENGINEERING DESIGN, AND FINAL APPROVAL. CSRS IS
NOT LIABLE FOR THE USE OR MISUSE, MISINTERPRETATION, OR ERRORS IN ANY
CALCULATIONS DERIVED FROM ILLUSTRATED CONCEPTUAL LAYOUT.



Potential Developable Area
SCALE: 1"= 300' (22" x 34")
0 300' 600' 900'