

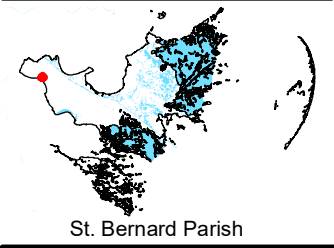
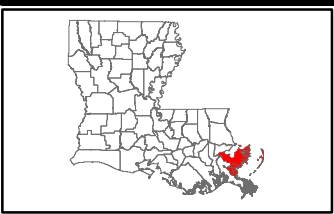
Exhibit X. Sinclair Site National Wetlands Inventory Map



Sinclair Site National Wetlands Inventory Map

National Wetlands Inventory
Sinclair Site
St. Bernard Parish, LA

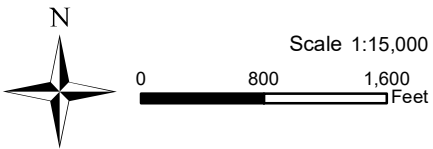
St. Bernard EDF



- LEGEND**
- Sinclair Site Boundary (285.64 Ac. ±)
 - Wetland Type**
 - Estuarine and Marine Deepwater
 - Estuarine and Marine Wetland
 - Freshwater Emergent Wetland
 - Freshwater Forested/Shrub Wetland
 - Freshwater Pond
 - Lake
 - Riverine
 - Existing Roadway**
 - 4-Lane State Highway
 - Urban State Highway
 - Rural State Highway
 - Local Roads
 - Railroad

P:\214094\GNO Certified Sites Program\Sinclair Site\CAD\GIS templates\GIS\Exhibit V. Sinclair Site National Wetlands Inventory Map.mxd

- General Notes:
1. No attempt has been made by CSRS, Inc. to verify site boundary, title, actual legal ownership, deed restrictions, servitudes, easements, or other burdens on the property, other than that furnished by the client or his representative.
 2. Transportation data from 2013 TIGER datasets via U.S. Census Bureau at <ftp://ftp2.census.gov/geo/tiger/TIGER2013>.
 3. National Wetlands Inventory (NWI) data current as of May 2016 as downloaded from http://www.fws.gov/wetlands/Downloads/State/LA_wetlands.zip.
 4. 2015 aerial imagery from USDA-APFO National Agricultural Inventory Project (NAIP) and may not reflect current ground conditions.



Date:	10/18/2016
Project Number:	214094
Drawn By:	TMK
Checked By:	JAY

CSRS
IMAGINE SHAPE DELIVER
6767 Perkins Road Suite 200 Baton Rouge, LA 70808
Telephone: 225 769-0546 Fax: 225 767-0060
www.csrsonline.com