

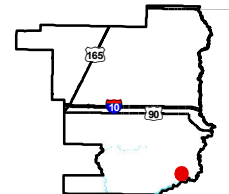
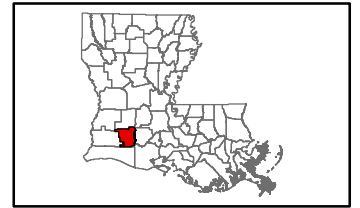
Exhibit L. Benoit LA-26 Site Potable Water Infrastructure Map



Benoit LA-26 Site Potable Water Infrastructure Map

Benoit LA-26 Site
Jefferson Davis Parish, LA

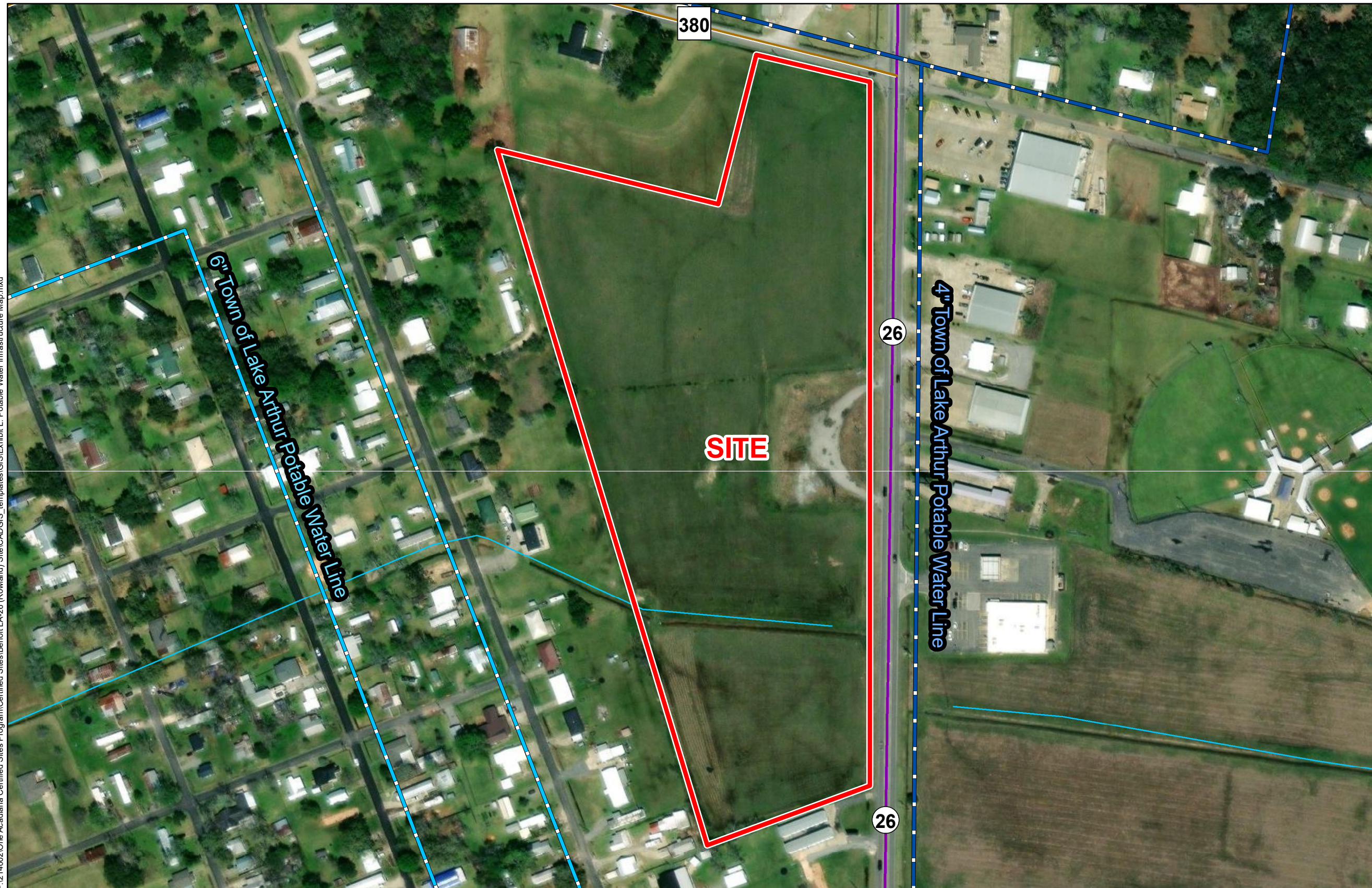
One Acadiana



Jefferson Davis Parish

LEGEND

- Site Boundary (18.37± ac.)
- Stream
- Town of Lake Arthur Potable Water Infrastructure**
- 6" Town of Lake Arthur Potable Water Line
- 4" Town of Lake Arthur Potable Water Line
- Existing Roadway**
- Urban State Highway
- Rural State Highway



P:\214002\One Acadiana Certified Sites\Benoit LA-26 (Rowland) Site\CAD\GIS_templates\GIS\Exhibit L - Potable Water Infrastructure Map.mxd

General Notes:

1. No attempt has been made by CSRS, Inc. to verify site boundary, title, actual legal ownership, deed restrictions, servitudes, easements, or other burdens on the property, other than that furnished by the client or his representative.
2. Transportation data from 2013 TIGER datasets via U.S. Census Bureau at [ftp://ftp2.census.gov/geo/tiger/TIGER2013](http://ftp2.census.gov/geo/tiger/TIGER2013).
3. Utility information from visual inspection and/or the individual utility operators. Exact field location has not been determined by survey. The lines shown are an approximate representation only and may have been offset for depiction purposes.
4. 2015 aerial imagery from USDA-APFO National Agricultural Inventory Project (NAIP) and may not reflect current ground conditions.
5. Potable water utility information was derived and digitized from the Town of Lake Arthur.



Scale 1:2,500
0 130 260 Feet



Date:	8/17/2023
Project Number:	214002
Drawn By:	BMS
Checked By:	EEB

