

## Exhibit R. Double D Site Roadway Transportation Infrastructure Wide Map



Baton Rouge Area Chamber®

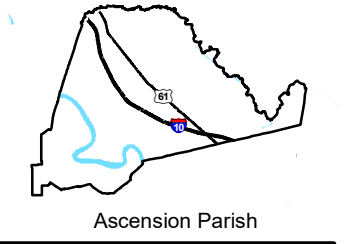




# Double D Site Roadway Transportation Infrastructure Wide Map

Double D Site  
Ascension Parish, LA

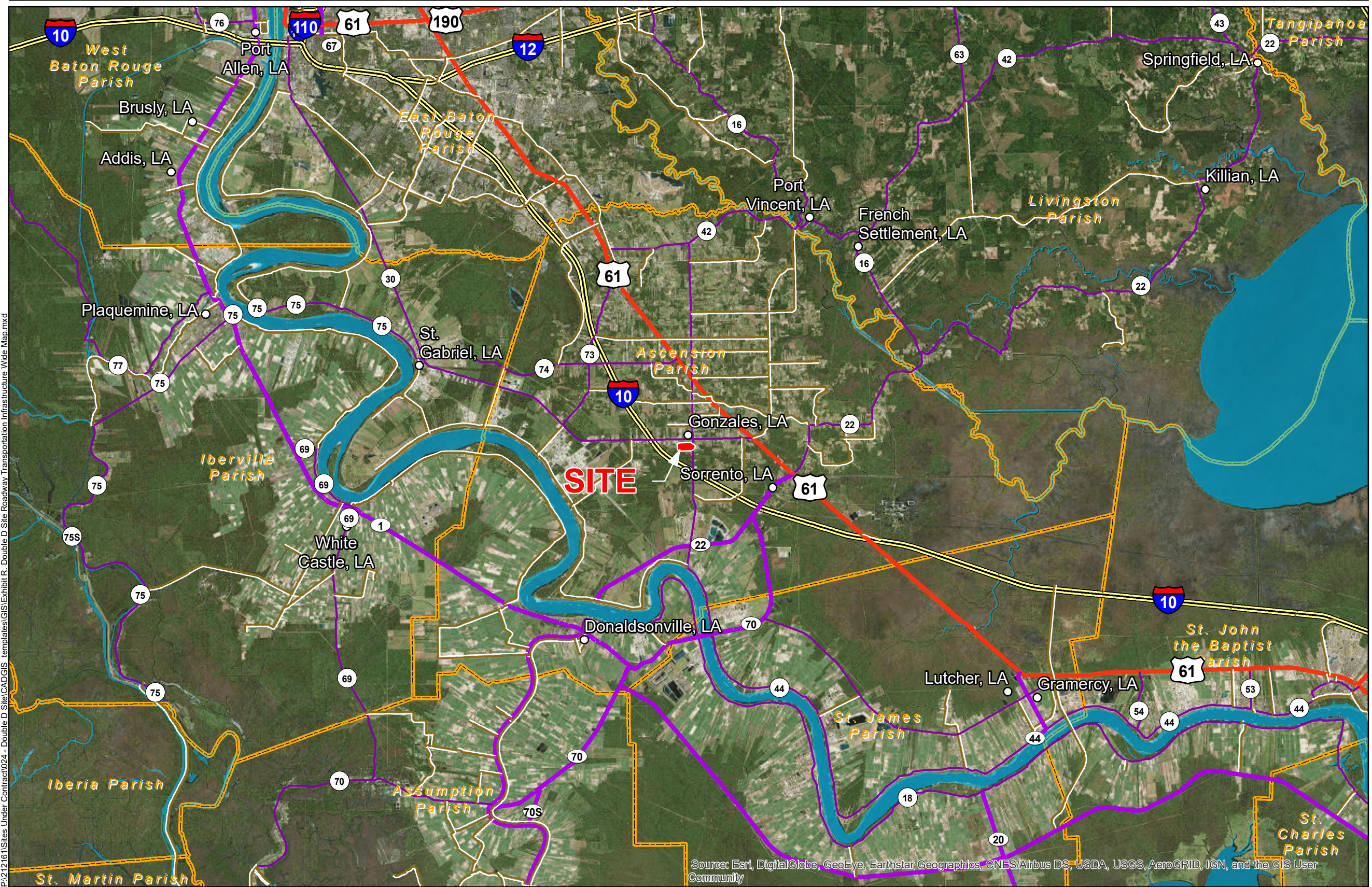
BRAC



Ascension Parish

LEGEND

- Site Boundary
- Existing Roadway
  - Interstate
  - US Highway
  - 4-Lane State Highway
  - Urban State Highway
  - Rural State Highway
- Cities
- Waterbody
- Parish Boundary



P:\212161\Sites Under Contract\024 - Double D Site\CAD\GIS templates\GIS\Exhibit R - Double D Site Roadway Transportation Infrastructure Wide Map.mxd

- General Notes:
1. No attempt has been made by CSRS, Inc. to verify site boundary, title, actual legal ownership, deed restrictions, servitudes, easements, or other burdens on the property, other than that furnished by the client or his representative.
  2. Transportation data from 2013 TIGER datasets via U.S. Census Bureau at <ftp://ftp2.census.gov/geo/tiger/TIGER2013>.
  3. Utility information from visual inspection and/or the individual utility operators. Exact field location has not been determined by survey. The lines shown are an approximate representation only and may have been offset for depiction purposes.
  4. 2015 aerial imagery from USDA-APFO National Agricultural Inventory Project (NAIP) and may not reflect current ground conditions.

Source: Esri, DigitalGlobe, GeoEye, Earthstar Geographics, CNES/Airbus DS, USDA, USGS, AeroGRID, IGN, and the GIS User Community



Scale 1:250,000  
0 13,000 26,000 Feet



Date:	5/21/2019
Project Number:	212161
Drawn By:	DWC
Checked By:	TMK

**CSRS**  
IMAGINE SHAPE DELIVER  
6767 Perkins Road Suite 200 Baton Rouge, LA 70808  
Telephone: 225 769-0546 Fax: 225 767-0060  
[www.csrsonline.com](http://www.csrsonline.com)