

Exhibit N.

Germania Site

Electrical Distribution Infrastructure Map

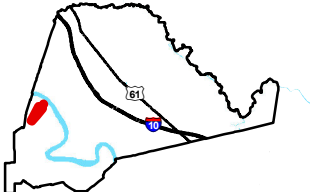


Baton Rouge Area Chamber®

Germania Site Electrical Distribution Infrastructure Map

Germania Site
Ascension Parish, LA

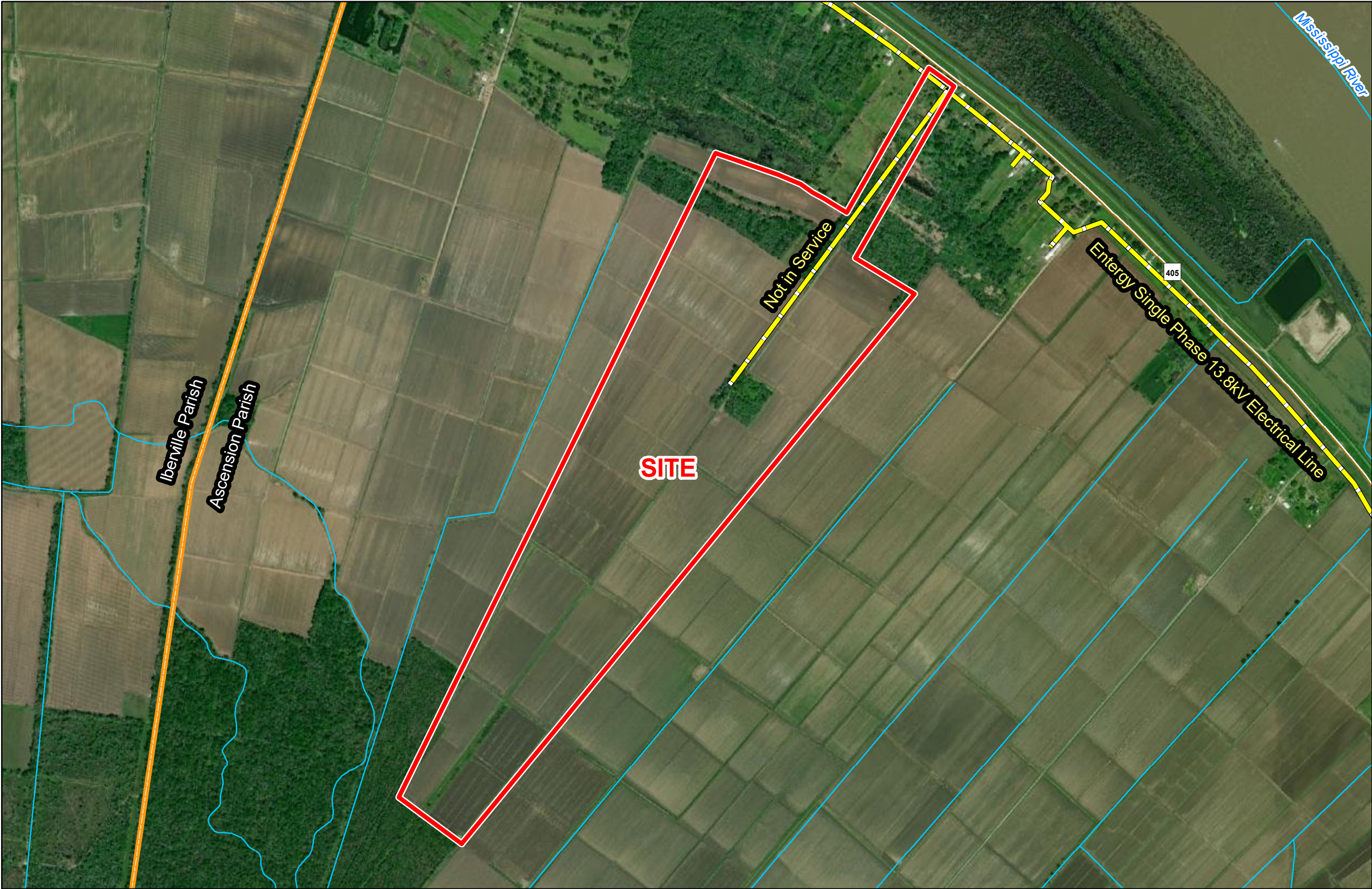
BRAC



Ascension Parish

LEGEND

- Site Boundary (435.63± ac.)
- Parish Boundary
- Entergy Single Phase 13.8kV Electrical Line
- Stream
- Existing Roadway
- Rural State Highway



P:\212161\Sites Under Contract\027 - Germania Site\CAD\GIS_templates\GIS\Exhibit N. Electrical Distribution Infrastructure Map.mxd

- General Notes:
1. No attempt has been made by CSRS, Inc. to verify site boundary, title, actual legal ownership, deed restrictions, servitudes, easements, or other burdens on the property, other than that furnished by the client or his representative.
 2. Transportation data from 2013 TIGER datasets via U.S. Census Bureau at <ftp://ftp2.census.gov/geo/tiger/TIGER2013>.
 3. Utility information from visual inspection and/or the individual utility operators. Exact field location has not been determined by survey. The lines shown are an approximate representation only and may have been offset for depiction purposes.
 4. 2015 aerial imagery from USDA-APFO National Agricultural Inventory Project (NAIP) and may not reflect current ground conditions.
 5. Electrical utility data derived and digitized from Entergy.



Date:	5/10/2023
Project Number:	212161
Drawn By:	BMS
Checked By:	EEB

CSRS