

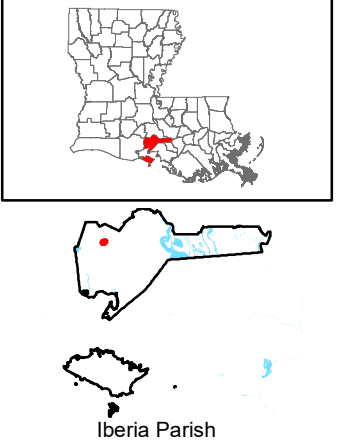
Exhibit W. Progress Point Site National Wetlands Inventory Map



Progress Point Site National Wetlands Inventory Map

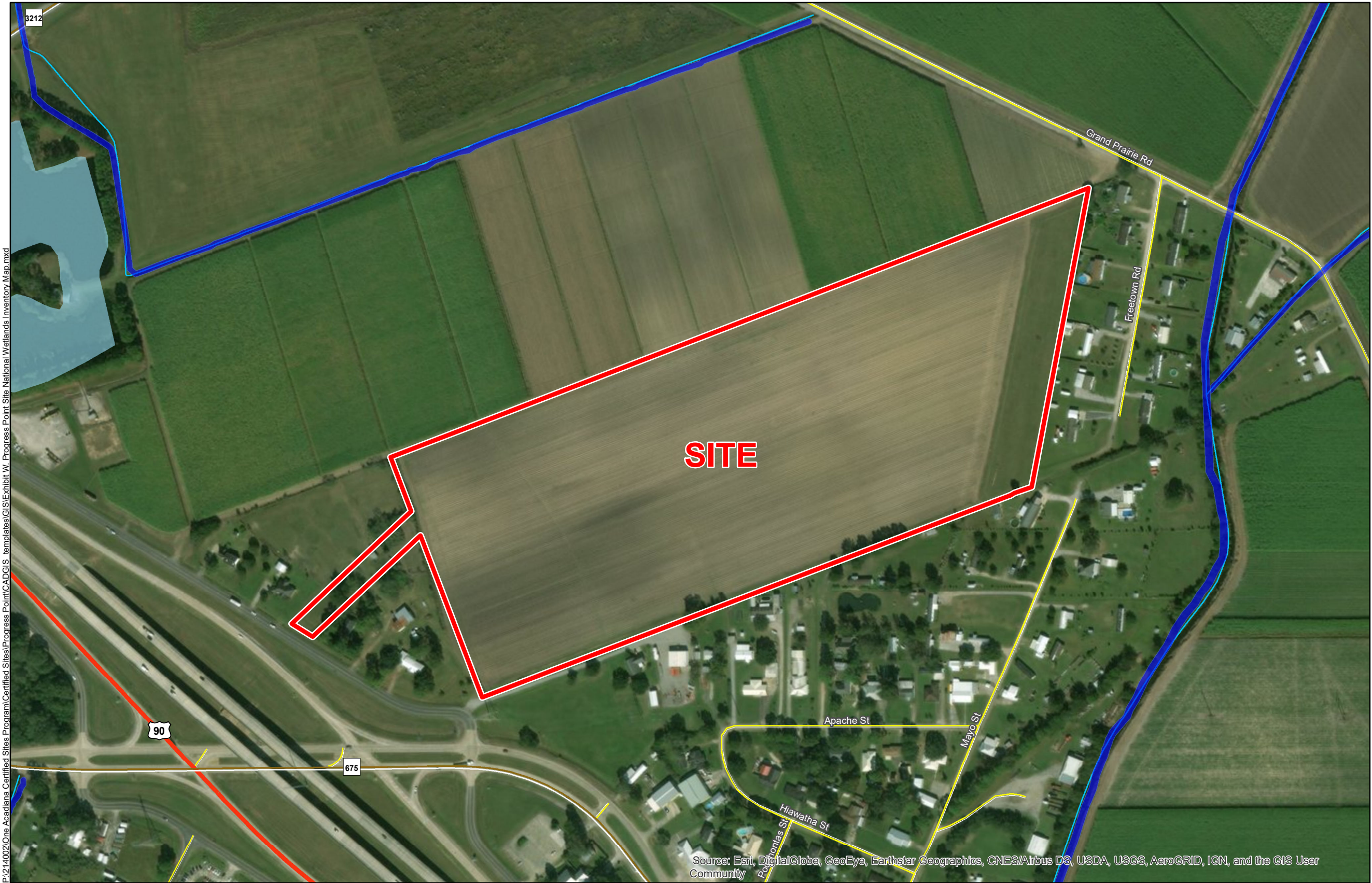
Progress Point Site
Iberia Parish, LA

One Acadiana



LEGEND

- Site Boundary
- Wetland Type
 - Freshwater Pond
 - Riverine
- Existing Roadway
 - US Highway
 - Rural State Highway
 - Local Roads
 - Stream



Source: Esri, DigitalGlobe, GeoEye, Earthstar Geographics, CNES/Airbus DS, USDA, USGS, AeroGRID, IGN, and the GIS User Community

- General Notes:
1. No attempt has been made by CSRS, Inc. to verify site boundary, title, actual legal ownership, deed restrictions, servitudes, easements, or other burdens on the property, other than that furnished by the client or his representative.
 2. Transportation data from 2013 TIGER datasets via U.S. Census Bureau at <ftp://ftp2.census.gov/geo/tiger/TIGER2013>.
 3. National Wetlands Inventory (NWI) data current as of May 2016 as downloaded from http://www.fws.gov/wetlands/Downloads/State/LA_wetlands.zip.
 4. 2015 aerial imagery from USDA-APFO National Agricultural Inventory Project (NAIP) and may not reflect current ground conditions.



Scale 1:4,000
0 210 420 Feet



Date:	2/28/2018
Project Number:	214002
Drawn By:	EEB
Checked By:	TMK

CSRS
IMAGINE SHAPE DELIVER
6767 Perkins Road Suite 200 Baton Rouge, LA 70808
Telephone: 225 769-0546 Fax: 225 767-0060
www.csrsone.com