

## Exhibit U. Progress Point Site Soils Conservation Service Map





# Progress Point Site Soils Conservation Service Map

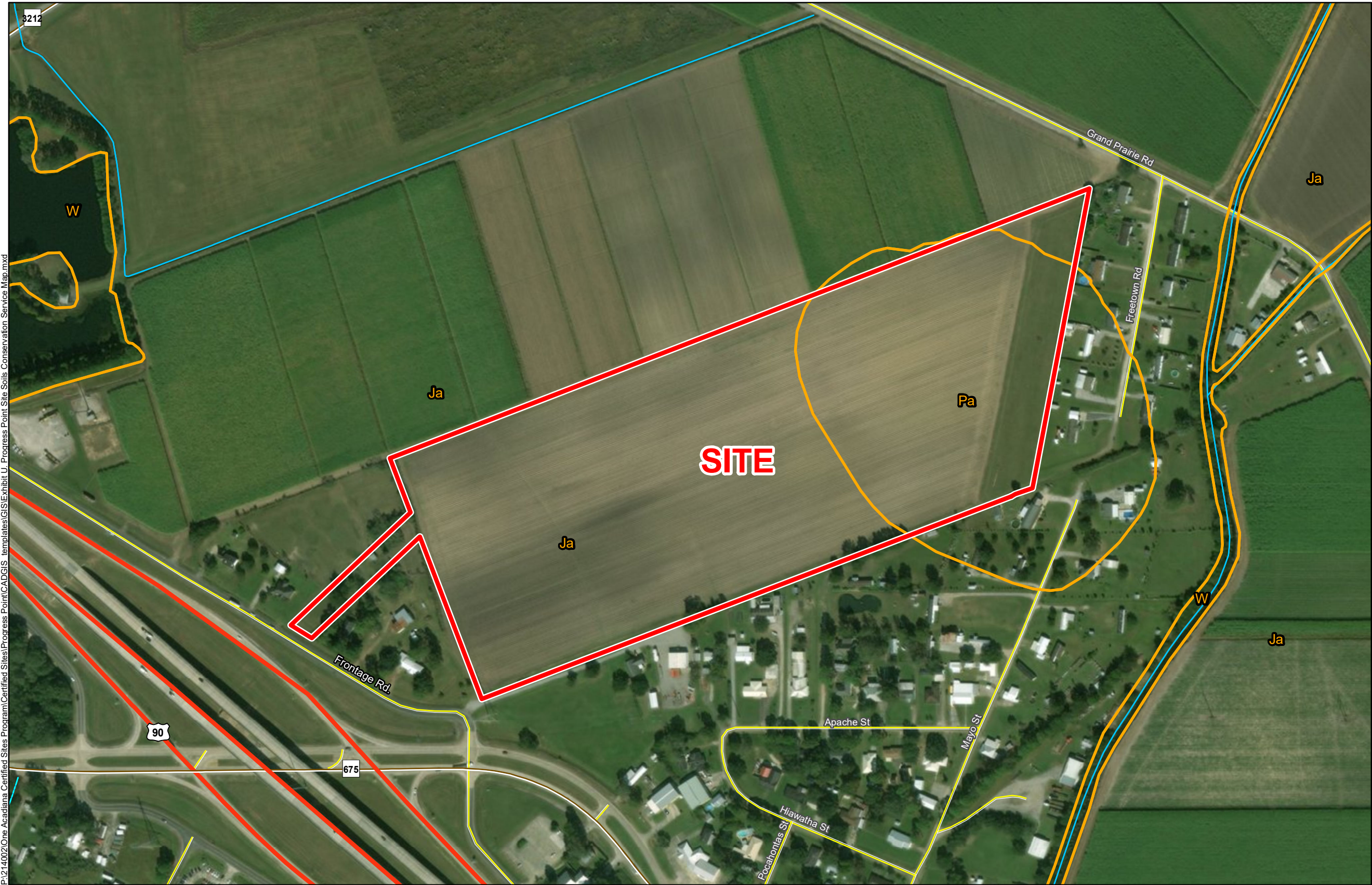
Progress Point Site  
Iberia Parish, LA

One Acadiana

Iberia Parish

LEGEND

- Site Boundary
- Soil Type**
- Ja - Jeanerette silt loam, 0 to 1 percent slopes (5% hydric)
- Pa - Patoutville silt loam, 0 to 1 percent slopes (5% hydric)
- W - Water
- Existing Roadway**
- US Highway
- Rural State Highway
- Local Roads
- Canal or Ditch
- Stream or River



General Notes:

1. No attempt has been made by CSRS, Inc. to verify site boundary, title, actual legal ownership, deed restrictions, servitudes, easements, or other burdens on the property, other than that furnished by the client or his representative.
2. Transportation data from 2013 TIGER datasets via U.S. Census Bureau at [ftp2.census.gov/geo/tiger/TIGER2013](http://ftp2.census.gov/geo/tiger/TIGER2013).
3. Soils data from USDA SSURGO website: <http://websoilsurvey.sc.egov.usda.gov/App/WebSoilSurvey.aspx>.
4. 2015 aerial imagery from USDA-APFO National Agricultural Inventory Project (NAIP) and may not reflect current ground conditions.



Date:	4/13/2018
Project Number:	214002
Drawn By:	EEB
Checked By:	TMK

6767 Perkins Road Suite 200 Baton Rouge, LA 70808  
Telephone: 225 769-0546 Fax: 225 767-0060  
[www.csrsone.com](http://www.csrsone.com)