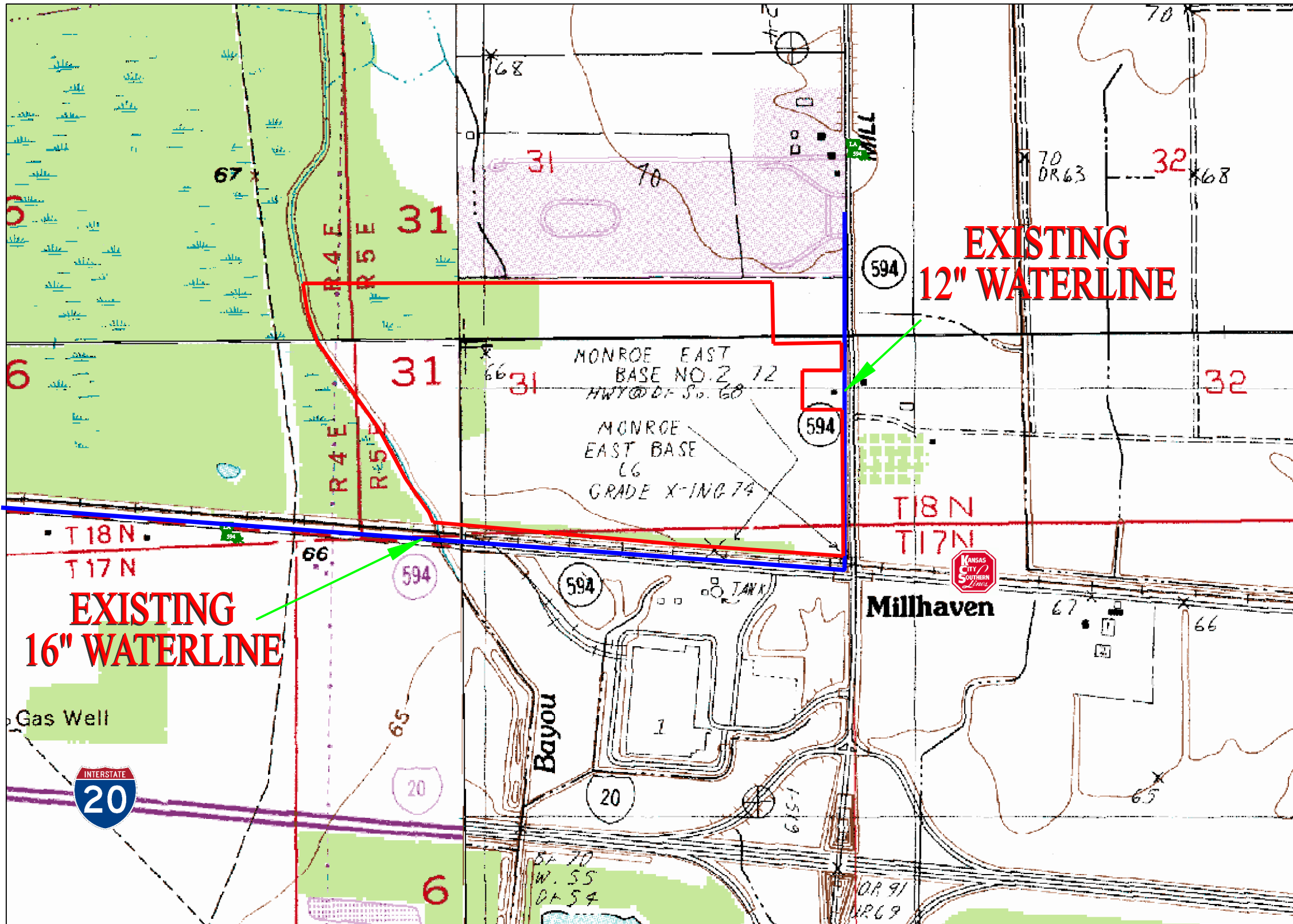
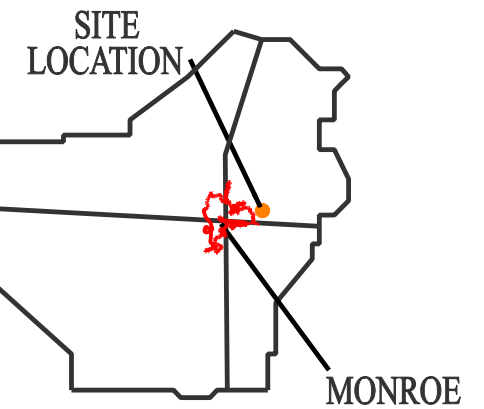


# EXHIBIT F, PETTY SOUTH SITE EXISTING POTABLE WATER INFRASTRUCTURE MAP



OUACHITA  
PARISH



**LEGEND**

— PROPERTY  
BOUNDARY



ECONOMIC ALLIANCE

**NELEA**



Prepared By

**DENMON**  
ENGINEERING  
ENGINEERS AND SURVEYORS  
114 VENABLE LANE  
MONROE, LOUISIANA 71203

EXISTING CAPACITY (CITY OF MONROE): 1,300,000 GPD

SOURCE: USGS TOPOGRAPHIC QUADRANGLE: CREW LAKE,  
SWARTZ, MONROE SOUTH, & MONROE NORTH

