

Exhibit R. Jamestown Business Park Telecommunications Infrastructure Map

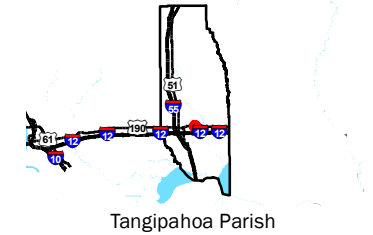
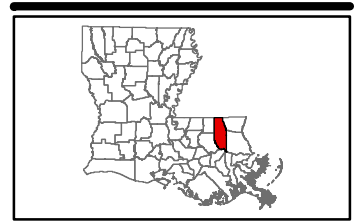


GREATER NEW ORLEANS
INC
REGIONAL ECONOMIC DEVELOPMENT






Jamestown Business Park Telecommunications Infrastructure Map

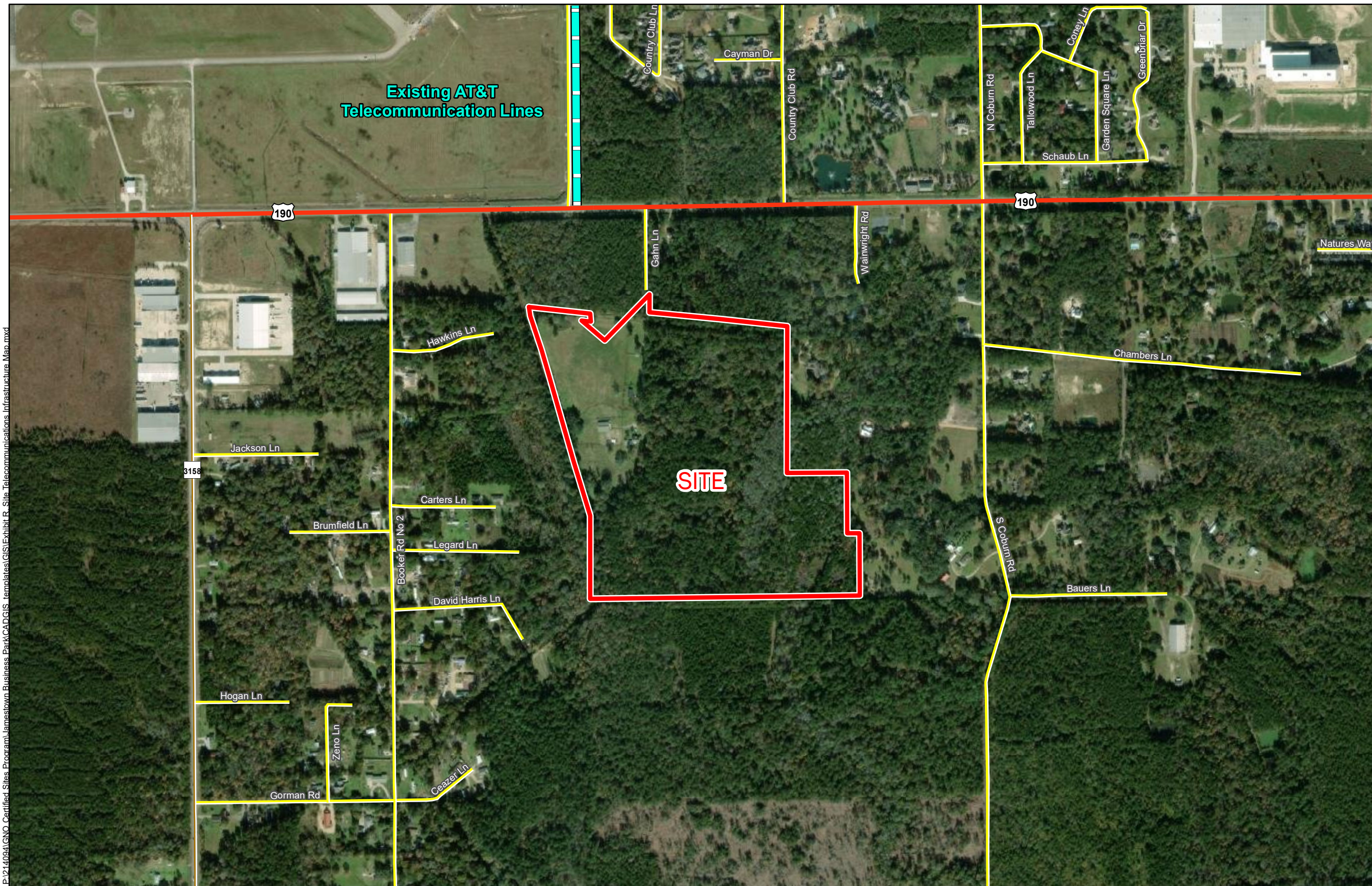
Jamestown Business Park
Tangipahoa Parish, LA

LED



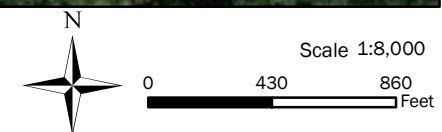
LEGEND

-  AT&T Telecommunication Lines
-  Site Boundary (71.46 Ac.±)
-  Local Roads
- Existing Roadway**
-  US Highway
-  Rural State Highway



P:\214094\GNO_Certified_Sites_Program\Jamestown Business Park\CAD\GIS_templates\GIS\Exhibit R_Site_Telecommunications_Infrastructure_Map.mxd

General Notes:
 1. No attempt has been made by CSRS, Inc. to verify site boundary, title, actual legal ownership, deed restrictions, servitudes, easements, or other burdens on the property, other than that furnished by the client or his representative.
 2. Transportation data from 2013 TIGER datasets via U.S. Census Bureau at <ftp://ftp2.census.gov/geo/tiger/TIGER2013>.
 3. 2015 aerial imagery from USDA-APFO National Agricultural Inventory Project (NAIP) and may not reflect current ground conditions.
 4. Utility information from visual inspection and/or the individual utility operators. Exact field location has not been determined by survey. The lines shown are an approximate representation only and may have been offset for depiction purposes.



Date:	9/23/2021
Project Number:	214094
Drawn By:	SEW
Checked By:	EEB

