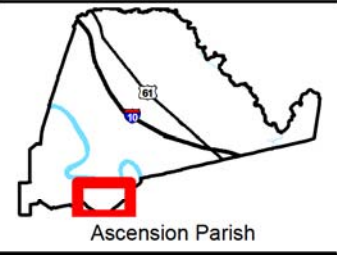
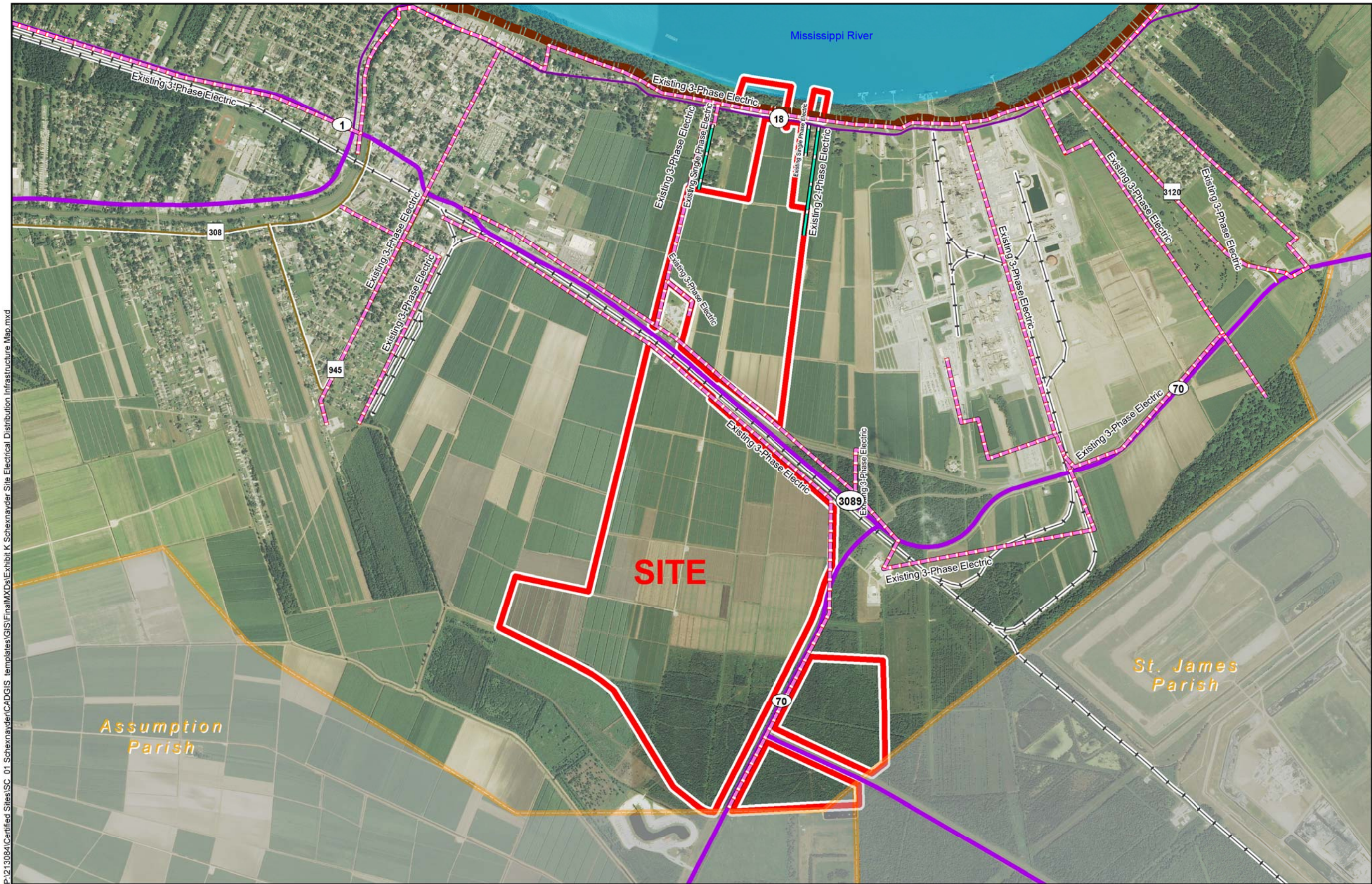



Exhibit K. Schexnayder Site Electrical Distribution Infrastructure Map

Existing Electric Distribution  
Schexnayder Site  
Ascension Parish, LA



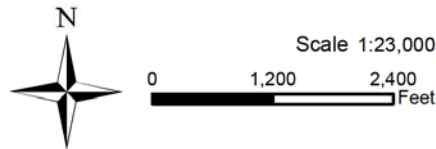
- LEGEND**
- Site Boundary (1,000 Acres +/-)
  - Entergy Distribution Line
    - Electric Not 3-Phase
    - Electric 3-Phase
  - Existing Roadway
    - 4-Lane State Highway
    - Urban State Highway
    - Rural State Highway
  - Railroad
  - Levee
  - Waterbody
  - Parish Boundary

 Baton Rouge Area Chamber

Date:	8/21/2014
Project Number:	213084.20.002
Drawn By:	MMS
Checked By:	TMG

General Notes:

1. No attempt has been made by CSRS, Inc. to verify site boundary, title, actual legal ownership, deed restrictions, servitudes, easements, or other burdens on the property, other than that furnished by the client or his representative.
2. Transportation data from 2013 TIGER datasets via U.S. Census Bureau at [ftp2.census.gov/geo/tiger/TIGER2013](http://ftp2.census.gov/geo/tiger/TIGER2013).
3. Utility information from visual inspection and/or the individual utility operators. Exact field location has not been determined by survey. The lines shown are an approximate representation only and may have been offset for depiction purposes.
4. 2013 aerial imagery from USDA-APFO National Agricultural Inventory Project (NAIP) and may not reflect current ground conditions.



 **CSRS**  
IMAGINE SHAPE DELIVER  
6767 Perkins Road Suite 200 Baton Rouge, LA 70808  
Telephone: 225 769-0546 Fax: 225 767-0060  
[www.csronline.com](http://www.csronline.com)