

Exhibit O.

Spanish Trail Industrial Park

Electrical Transmission

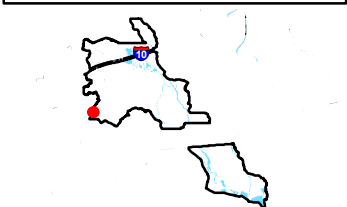
Infrastructure Map



Spanish Trail Industrial Park Electrical Transmission Infrastructure Map

Spanish Trail Industrial Park
St. Martin Parish, LA

One Acadiana



St. Martin Parish

LEGEND

Site Boundary

Substation

SLEMCO 138 kV Transmission Lines

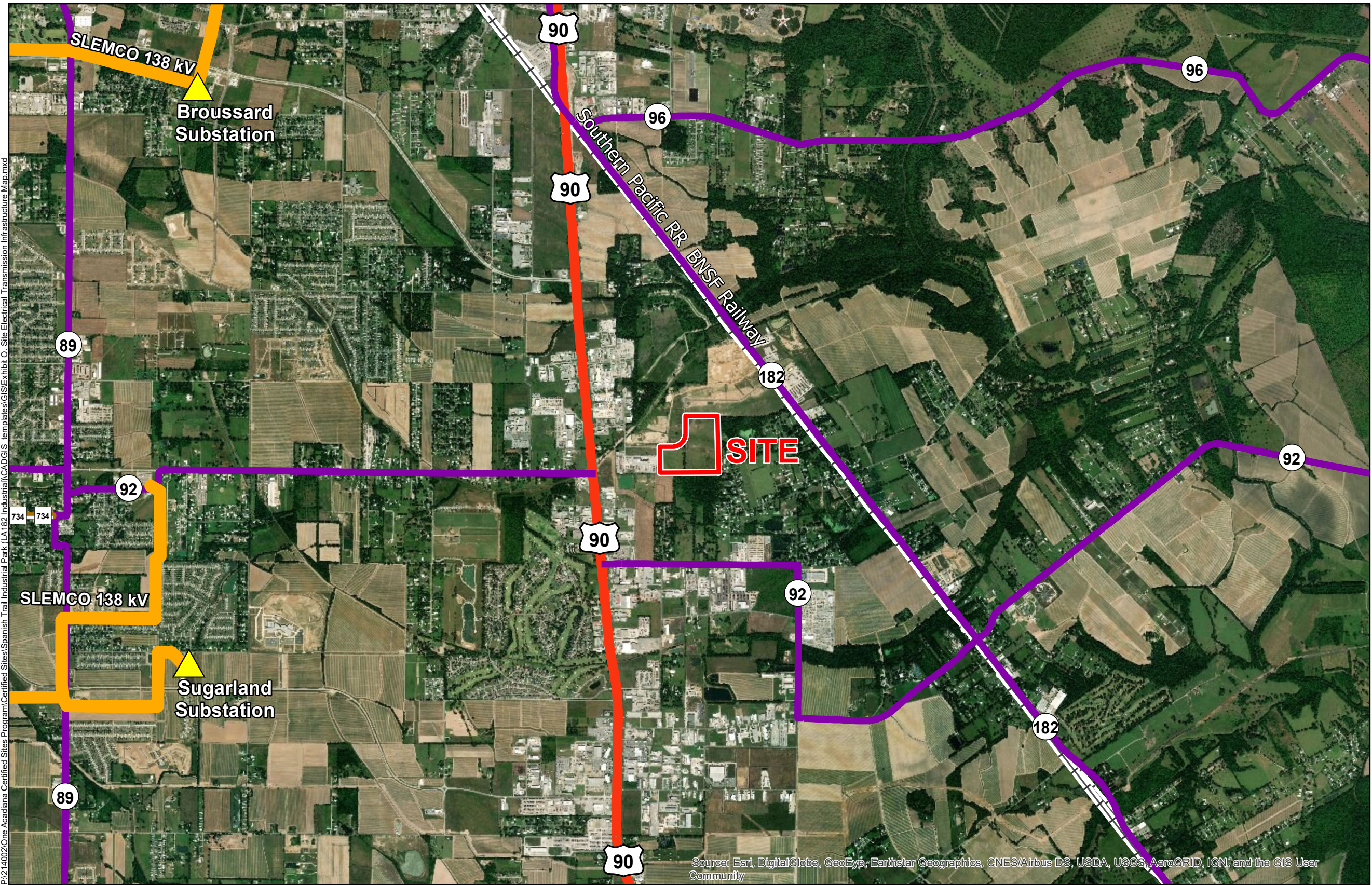
Existing Roadway

US Highway

Urban State Highway

Rural State Highway

Railroad



P:\214002\One Acadiana Certified Sites\Spanish Trail Industrial Park (LA182 Industrial)\CAD\GIS templates\GIS\Exhibit O. Site Electrical Transmission Infrastructure Map.mxd

Source: Esri, DigitalGlobe, GeoEye, Earthstar Geographics, CNES/Airbus DS, USDA, USGS, AeroGRID, IGN, and the GIS User Community

General Notes:

1. No attempt has been made by CSRS, Inc. to verify site boundary, title, actual legal ownership, deed restrictions, servitudes, easements, or other burdens on the property, other than that furnished by the client or his representative.
2. Transportation data from 2013 TIGER datasets via U.S. Census Bureau at <ftp://ftp2.census.gov/geo/tiger/TIGER2013>.
3. Utility information from visual inspection and/or the individual utility operators. Exact field location has not been determined by survey. The lines shown are an approximate representation only and may have been offset for depiction purposes.
4. 2015 aerial imagery from USDA-APFO National Agricultural Inventory Project (NAIP) and may not reflect current ground conditions.



Scale 1:35,000
0 1,800 3,600 Feet



Date:	2/19/2020
Project Number:	214002
Drawn By:	BNF
Checked By:	DWC

