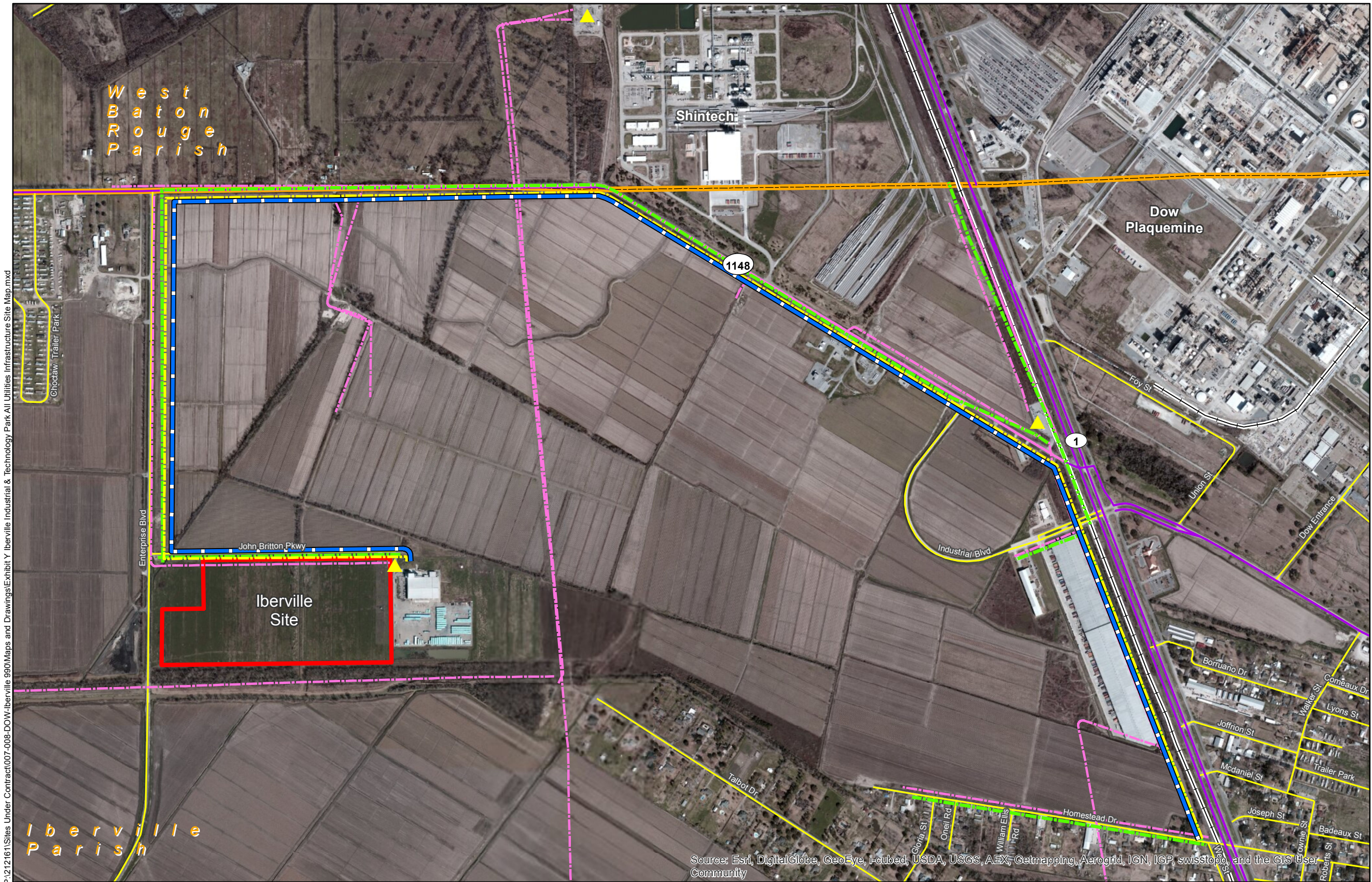


Exhibit Y. Iberville Industrial & Technology Park All Utilities Infrastructure Site Map



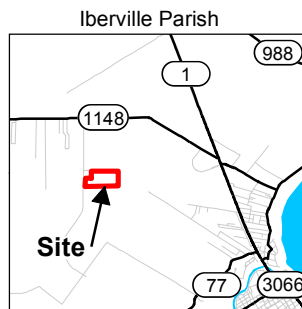
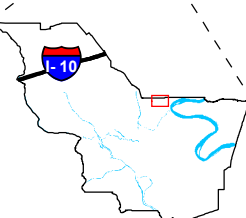
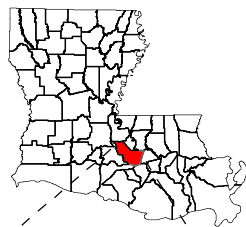
P:\212161\Sites Under Contract\007-008-DOW-Iberville 990\Maps and Drawings\Exhibit Y Iberville Industrial & Technology Park All Utilities Infrastructure Site Map.mxd

Source: Esri, DigitalGlobe, GeoEye, i-cubed, USDA, USGS, AEX, Getmapping, Aerogrid, IGN, IGP, swisstopo, and the GIS User Community

Project:
**Site Exhibit for
Iberville Site
Iberville Parish, LA**

Client:

BRAC



0 1.25 2.5 Miles

Legend:

- Substation
- Existing Electric Distribution
- Existing Natural Gas (Iberville Parish)
- Existing Fiber Optic (AT&T)
- Existing Potable Water (Iberville Parish)
- State Highway
- Local Road
- Railroad
- Iberville Site
- Parish Boundary



Source:
GIS features acquired from public domain state and federal data sources (LDOTD, GNIS, LOSCO, US Census Bureau).

Date:	11/26/2013
Project Number:	212161.20.008
Drawn By:	MMS
Checked By:	TMG

CSRS
IMAGINE SHAPE DELIVER
6767 Perkins Road Suite 200 Baton Rouge, LA 70808
Telephone: 225 769-0546 Fax: 225 767-0060
www.csrsonline.com

General Notes:

1. No attempt has been made by CSRS, Inc. to verify title, actual legal ownership, deed restrictions, servitudes, easements, or other burdens on the property, other than that furnished by the client or his representative.
2. Railroad and Highway data obtained from 2013 TIGER datasets via U.S. Census Bureau at <ftp://ftp2.census.gov/geo/tiger/TIGER2013>
3. Utility information from visual inspection and the individual utility operators (Entergy, Pointe Coupee Electric, Dow Chemical, Iberville Parish Utilities).
4. Exact field location has not been determined by survey. The lines shown are an approximate representation only and may have been offset for depiction purposes.
5. There is no existing wastewater service at this site. See Exhibit "Iberville Industrial & Technology Park Wastewater Infrastructure Upgrade Letter" for more information.



0 650 1,300 Feet