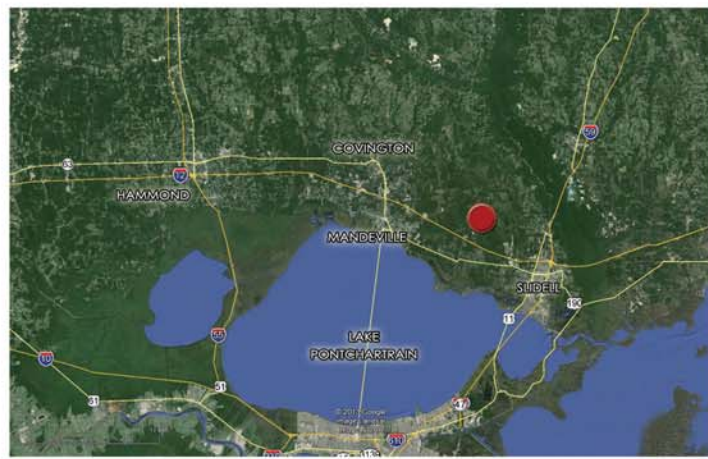


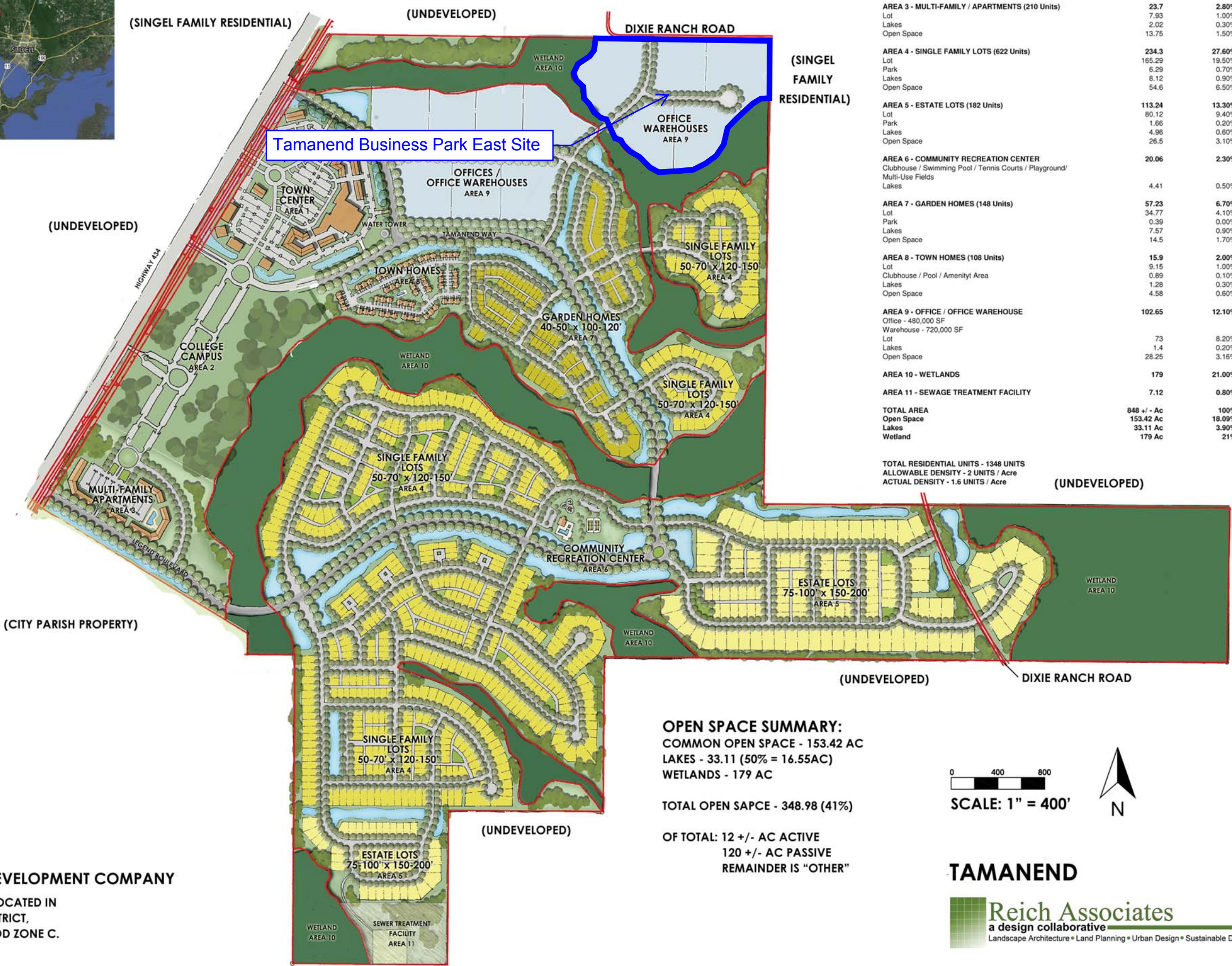
# Exhibit GG. Tamanend Business Park East Site Master Plan



# Tamanend Business Park East Site Master Plan



VICINITY MAP



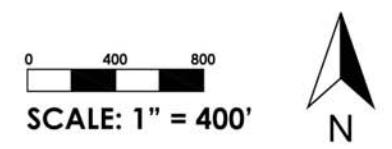
TOTAL LAND USE AREA	ACREAGE +/-	PERCENTAGE +/-
<b>AREA 1 - TOWN CENTER (78 Loft Units)</b>	41.50	4.90%
Commercial x Office = 430,000 SF		
Lot	26.91	3.1%
Lakes	3.35	0.50%
Open Space	11.24	1.30%
<b>AREA 2 - COLLEGE CAMPUS</b>	53.3	6.30%
University Campus	41.84	4.90%
High School	11.46	1.40%
<b>AREA 3 - MULTI-FAMILY / APARTMENTS (210 Units)</b>	23.7	2.80%
Lot	7.93	1.00%
Lakes	2.02	0.30%
Open Space	13.75	1.50%
<b>AREA 4 - SINGLE FAMILY LOTS (622 Units)</b>	234.3	27.60%
Lot	165.29	19.50%
Park	6.29	0.70%
Lakes	8.12	0.90%
Open Space	54.6	6.50%
<b>AREA 5 - ESTATE LOTS (182 Units)</b>	113.24	13.30%
Lot	80.12	9.40%
Park	1.66	0.20%
Lakes	4.96	0.60%
Open Space	26.5	3.10%
<b>AREA 6 - COMMUNITY RECREATION CENTER</b>	20.06	2.30%
Clubhouse / Swimming Pool / Tennis Courts / Playground / Multi-Use Fields		
Lakes	4.41	0.50%
<b>AREA 7 - GARDEN HOMES (148 Units)</b>	57.23	6.70%
Lot	34.77	4.10%
Park	0.39	0.00%
Lakes	7.57	0.90%
Open Space	14.5	1.70%
<b>AREA 8 - TOWN HOMES (108 Units)</b>	15.9	2.00%
Lot	9.15	1.00%
Clubhouse / Pool / Amenities Area	0.89	0.10%
Lakes	1.28	0.30%
Open Space	4.58	0.60%
<b>AREA 9 - OFFICE / OFFICE WAREHOUSE</b>	102.65	12.10%
Office - 480,000 SF		
Warehouse - 720,000 SF		
Lot	73	8.20%
Lakes	1.4	0.20%
Open Space	28.25	3.16%
<b>AREA 10 - WETLANDS</b>	179	21.00%
<b>AREA 11 - SEWAGE TREATMENT FACILITY</b>	7.12	0.80%
<b>TOTAL AREA</b>	848 +/- Ac	100%
Open Space	153.42 Ac	18.09%
Lakes	33.11 Ac	3.90%
Wetland	179 Ac	21%

TOTAL RESIDENTIAL UNITS - 1348 UNITS  
ALLOWABLE DENSITY - 2 UNITS / Acre  
ACTUAL DENSITY - 1.6 UNITS / Acre

**OPEN SPACE SUMMARY:**  
COMMON OPEN SPACE - 153.42 AC  
LAKES - 33.11 (50% = 16.55AC)  
WETLANDS - 179 AC

TOTAL OPEN SPACE - 348.98 (41%)

OF TOTAL: 12 +/- AC ACTIVE  
120 +/- AC PASSIVE  
REMAINDER IS "OTHER"



**OWNER: WEYERHAEUSER REAL ESTATE DEVELOPMENT COMPANY**

TAMANEND: A 848.26 ACRE PORTION OF GROUND LOCATED IN SECTIONS 3,4, & 9, T85-R13E, GREENSBURG LAND DISTRICT, ST. TAMMANY PARISH, LOUISIANA. LOCATED IN FLOOD ZONE C.