

Exhibit P. Chemin 2 Site Wetlands Delineation Report



Chenier Environmental Consulting, LLC

P.O. Box 82466

Baton Rouge, LA 70884

Business: 225-235-9557

E-mail: aaronbass@chenierenvironmental.com

December 8, 2025

Ms. Megan Duhon
One Acadiana
523 Jefferson Street
Lafayette, LA 70501

Chemin 2 Site Wetlands Delineation Report

Via e-mail: <mailto:megan@oneacadiana.org>, elliott.boudreaux@westwoodps.com;
christian.ordoyne@westwoodps.com

Subject: Chemin 2 Site – Wetland Delineation Letter Report
Youngsville, Louisiana

Chenier Environmental Consulting, LLC (Chenier) is submitting this Wetland Delineation Letter Report for a ±25-acre tract off Chemin Metairie Parkway in Youngsville, Lafayette Parish, Louisiana. This report was prepared to support LED's *Small Sites Application* program. Field data collected is sufficient to produce a complete wetland delineation report for submittal to the U.S. Army Corps of Engineers (USACE) for a Jurisdictional Determination Request (JD) at a later time.

BACKGROUND

This report presents the summary results of a wetland delineation that was conducted in accordance with the *Corps of Engineers Wetlands Delineation Manual* (U.S. Army Corps of Engineers, Waterways Experiment Station 1987) and subsequent guidance provided in the *Regional Supplement to the Corps of Engineers Wetland Delineation Manual: Atlantic and Gulf Coastal Plain Region* (USACE, Wetland Regulatory Assistance Program 2010). Chenier biologists visited the Site on September 26, 2025, and collected field data on three diagnostic parameters- soils, vegetation, and hydrology.

Prior to field reconnaissance, Chenier reviewed the Natural Resources Conservation Service (NRCS) Web Soil Survey (2019), the Soil Survey of Lafayette Parish (United States Department of Agriculture, Soil Conservation Service 1976), United States Geological Survey (USGS) 7.5-minute topographic maps, and relevant aerial photography. Included for your review are **Attachment A: Figure 1 – Vicinity Map; Figure 2 – Existing Conditions Map; Figure 3 – Wetland Delineation Map and Attachment B: Site Photographs.**

Project Location and Description

The site is in Youngsville, Lafayette Parish, Louisiana (Figures 1 through 3). It is a rectangular-shaped agricultural field (sugar cane) bordered by Almonaster Road followed by Southside High school to the north; a drainage canal followed by agricultural land to the east; Chemin Metairie Parkway followed by agricultural land to the south; and Major Lucas Denais Drive followed by agricultural land to the west. The site can be accessed off Major Lucas Denais Drive.

The site is bound by drainage ditches on all four sides with multiple agricultural drainage features running through the site. It was planted with sugar cane at the time of the site visit.

Soils

The NRCS Web Soil Survey was used to determine mapped soil series. The revised official series descriptions were used to confirm profile matrix, redox features, and texture of soils underlying the Site. The Web Soil Survey shows that the Site may be underlain by Coteau silt loam and Frost Silt Loam (NRCS Web Soil Survey 2025) (Figure 2). **Table 1** shows the soil map unit name, soil unit percentage for the site, and the hydric status of the soil.

Table 1: NRCS Web Soil Survey Data

Map Unit Name	Soil Unit Site Percentage	Hydric Status
Coteau silt loam (CoA) 0 to 1 percent slope	88	No
Coteau-Frost complex (CtB) 0 to 2 percent slope	9.4	No
Frost Silt Loam (FrA) 0 to 1 percent slopes, occasionally flooded	2.6	Yes

Vegetation

The dominate vegetation on the subject property included upland species including *Cynodon dactylon* (Bermuda grass) and *Saccharum officinarum* (sugarcane) found at DP1 and DP2. There was no wetland vegetation observed at the time of the site visit. Wetland vegetation was observed in the municipal drainage canal (S4) along the inner channel bank including *Pontederia cordata* (pickerelweed).

Hydrology

The site is divided into northern and southern sections by S2, an agricultural drainage ditch that crosses the central portion of the property. The land exhibits a slightly convex topography, directing surface water either into S2 or toward roadside drainage ditches along the northern and southern boundaries. S2 conveys flow westward into S1 or eastward into S3. Drainage ditches are present along all property boundaries. The western boundary ditch (S1) wraps around the southwest corner, continues along the southern boundary, and ultimately flows east into the

municipal drainage canal along the eastern boundary (S3). Along the northern boundary, a subsurface drainage pipe directs flow east offsite, also discharging into S3. At the time of the site visit, S1 and S2 contained little to no surface water, whereas S3 exhibited relatively permanent water.

Conclusions

No wetlands or indicators of wetland hydrology were observed on the site during the field visit. The property was fully covered by mature sugarcane; however, given its history as an agricultural field and the absence of hydric soils, it is unlikely that jurisdictional wetlands are present, even accounting for the limited visibility within the crop. Three drainage ditches (S1, S2, and S3) and a subsurface drainage pipe along the northern boundary are present on the property, each conveying runoff east offsite. S1 and S2 did not exhibit relatively permanent flow or other characteristics indicative of jurisdictional waters and therefore appears to be non-jurisdictional. S3, in contrast, exhibited relatively permanent flow and appears to be jurisdictional, comprising approximately 1,000 linear feet of non-wetland waters.

Qualifications

Aaron Bass, PhD, is a coastal scientist with over 30 years' experience conducting wetland delineations and permitting complex projects in sensitive habitats throughout the Gulf Coast.

Should you have any questions about the report, please contact me at 225-235-9557 or via email at Aaronbass@chenierenvironmental.com.

Sincerely,

Chenier Environmental Consulting, LLC



Aaron S. Bass, Ph.D.

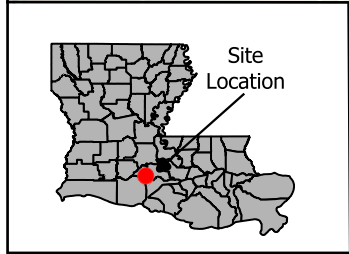
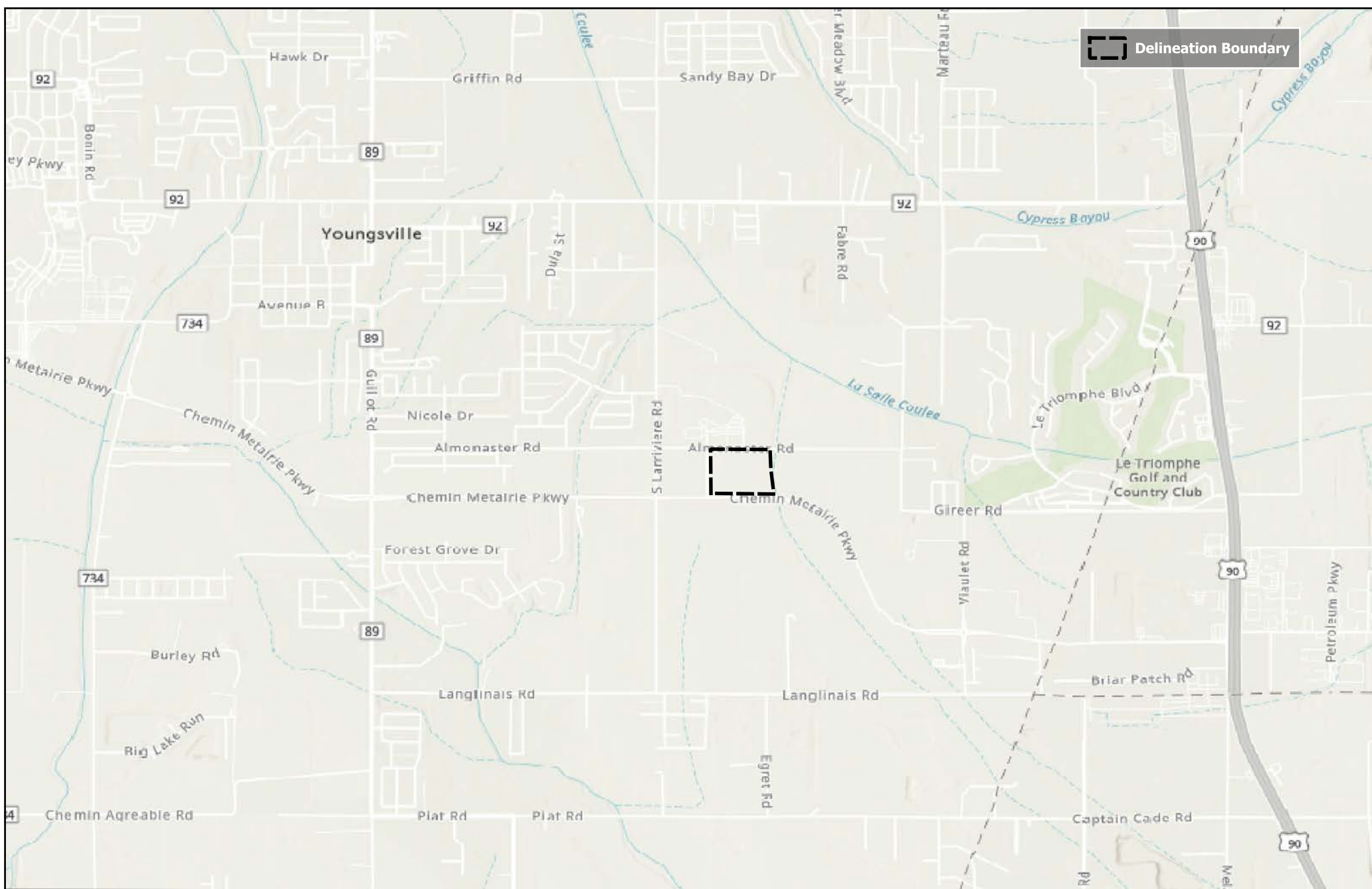
Chenier Environmental Consulting, LLC

4607 Bluebonnet, Blvd. Suite A

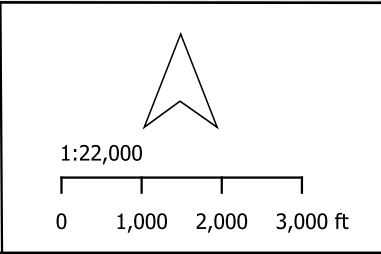
Baton Rouge, Louisiana 70809

ATTACHMENT A

FIGURES



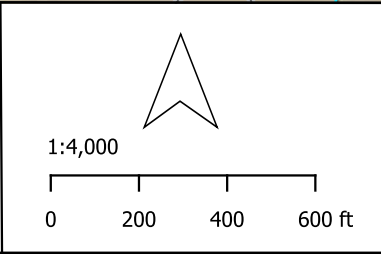
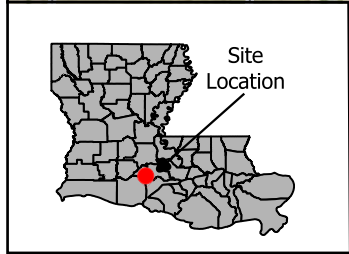
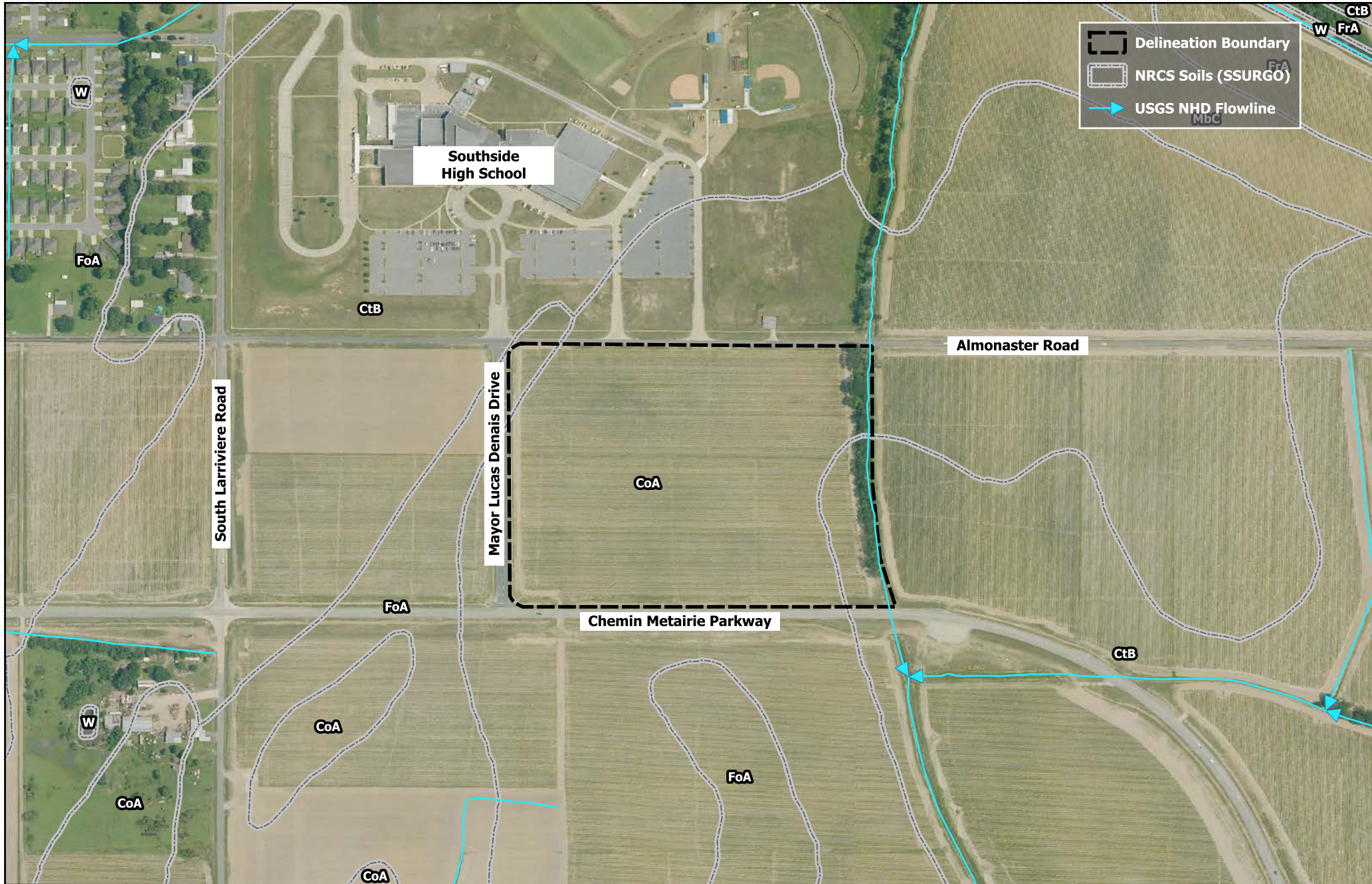
Site Location



**Figure 1 - Vicinity Map
Chemin 2 Site
One Acadiana
Lafayette Parish, Louisiana**

Notes:

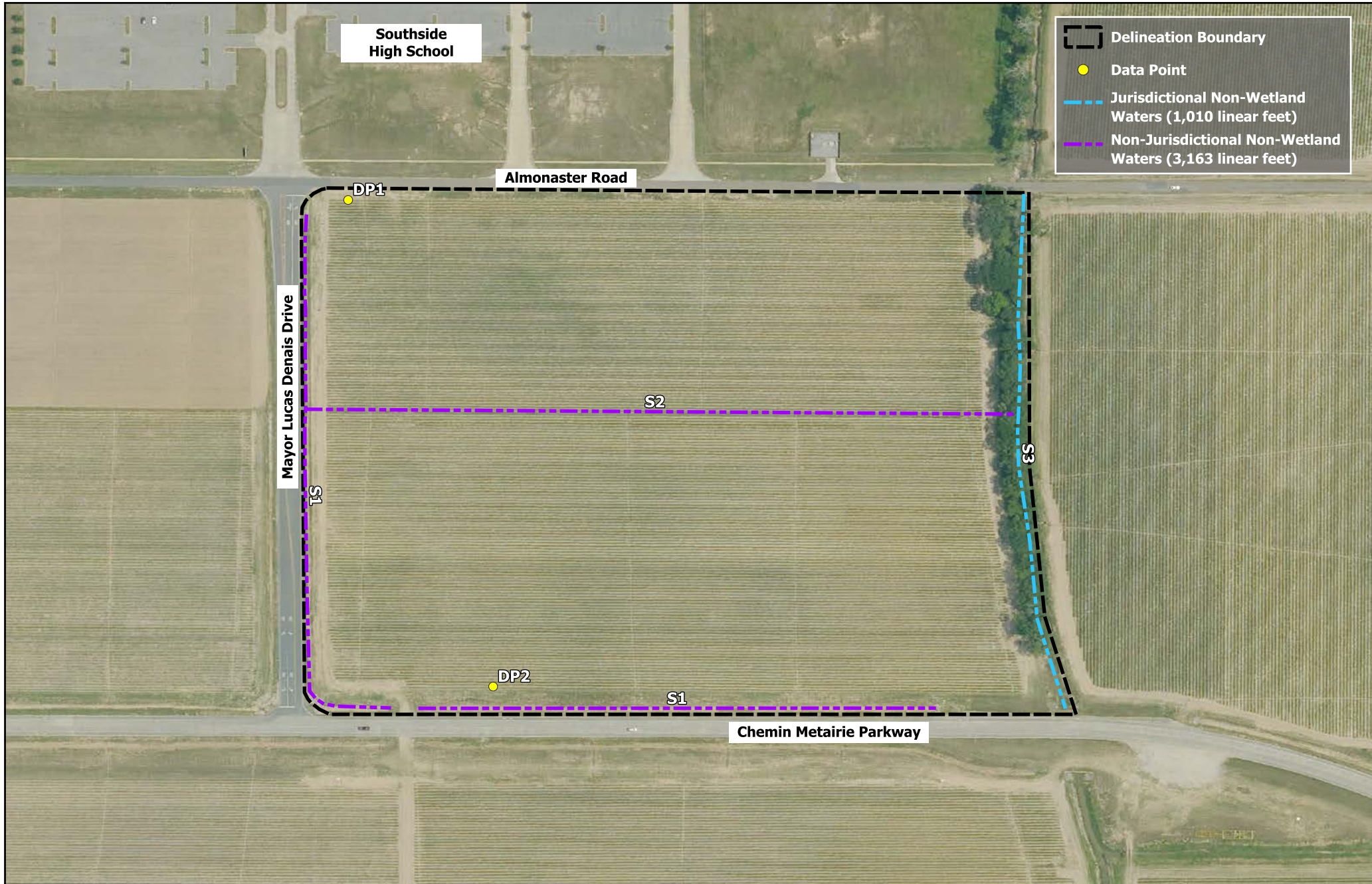
CHENIER
 Data Source: Chenier Environmental Consulting, LLC;
 Imagery: USGS Topographic Map
 Map Date: December 8, 2025
 Created By: Brad Griffin



**Figure 2 - Existing Conditions Map
Chemin 2 Site
One Acadiana
Lafayette Parish, Louisiana**

Delineation Boundary Soil Types:
 CoA - Coteau silt loam, 0 to 1% slopes
 CtB - Coteau-Frost complex, gently undulating
 FoA - Frost silt loam, 0 to 1% slopes

CHENIER
 Data Source: Chenier Environmental Consulting, LLC; NRCS; NHD;
 Imagery: 2023 NAIP DOQQ NC
 Map Date: December 8, 2025
 Created By: Brad Griffin



Southside High School

Almonaster Road

Mayor Lucas Denais Drive

Chemin Metairie Parkway

DP1

DP2

S2

S1

S3

Delineation Boundary

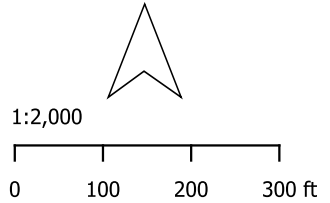
Data Point

Jurisdictional Non-Wetland Waters (1,010 linear feet)

Non-Jurisdictional Non-Wetland Waters (3,163 linear feet)



Site Location



**Figure 3 - Wetland Delineation Map
Chemin 2 Site
One Acadiana
Lafayette Parish, Louisiana**

Notes:

CHENIER

Data Source: Chenier Environmental Consulting, LLC
Imagery: 2023 NAIP DOQQ NC
Map Date: December 8, 2025
Created By: Brad Griffin

ATTACHMENT B
SITE PHOTOGRAPHS



1. Overview of Subject Property (25-acres)



2. Northern boundary



3. Eastern boundary



4. Western boundary



5. Southern boundary



6. S1 – along the western boundary



7. S1 – along the southern boundary



8. Southwest corner where S1 connects



9. S2 – subsurface drainage pipe on northern boundary



10. S2 – outfall into S3



11. S3 – Drainage canal on eastern boundary



12. S4 – agricultural drainage ditch



13. S1 connection to southern property



14. Representative agricultural field drainage into S1 (south)



15. Representative agricultural field drainage into S2 (north)



16. DP1 habitat view



17. DP1 soils



18. DP2 habitat view