

Exhibit BB:

Whitehall Industrial Site

All Utilities Infrastructure Map



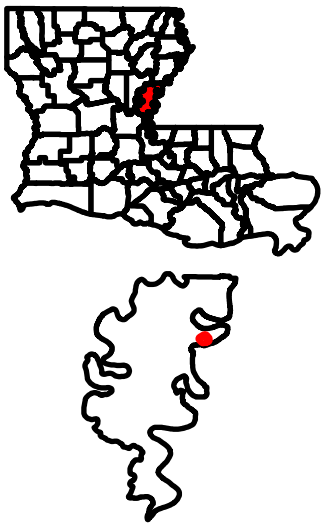
LOUISIANA CENTRAL
Industry & Entrepreneurship



Whitehall Industrial Site All Utilities Infrastructure Map

Site Exhibit for
Whitehall Industrial Site
Concordia Parish, LA

Louisiana
Central



Legend

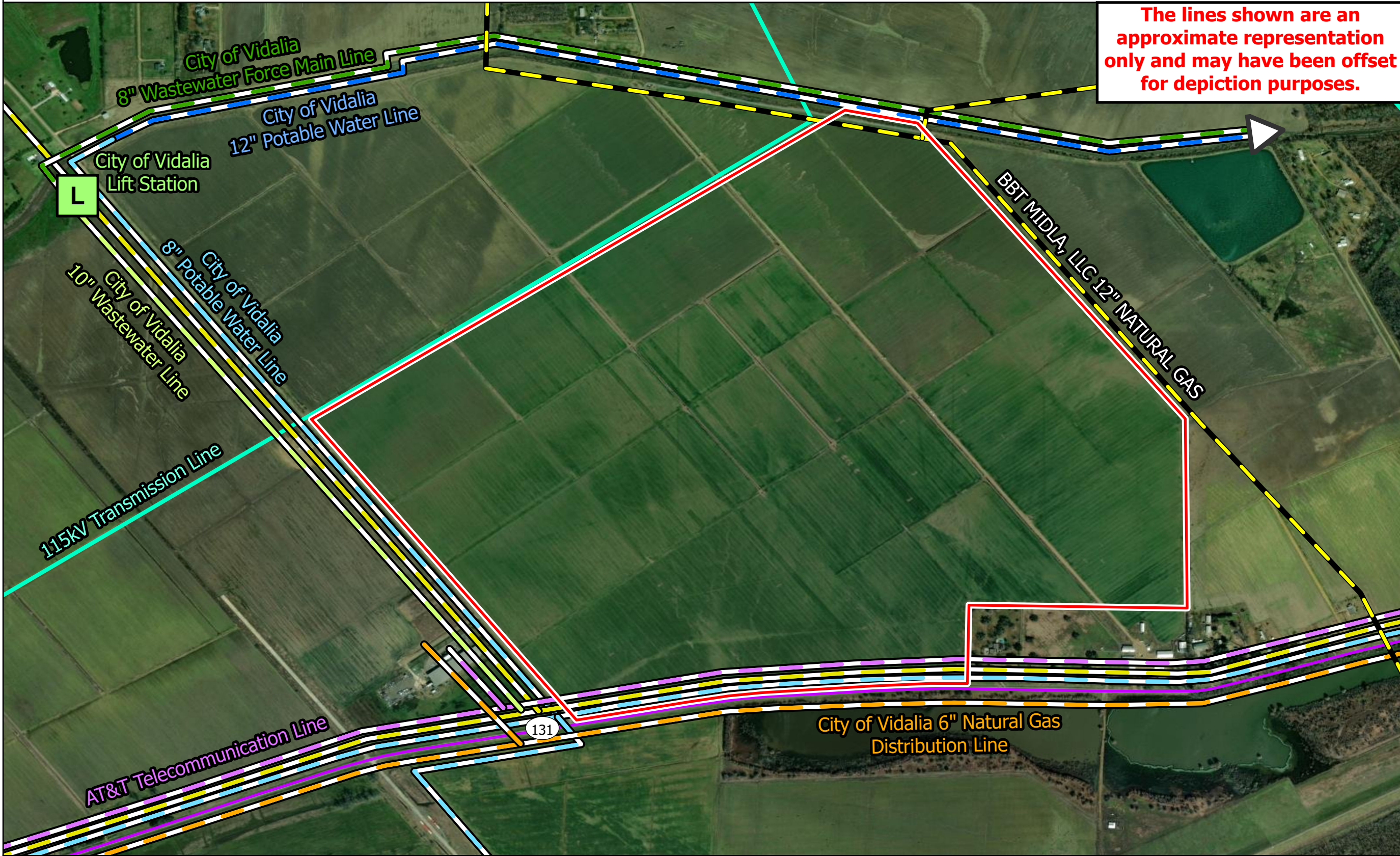
- Site Boundary (±519.94 ac.)
- City of Vidalia 12" Potable Water Line
- City of Vidalia 8" Potable Water Line
- City of Vidalia 13.2kV Electrical Distribution Line
- AT&T Telecommunication Line
- City of Vidalia 6" Natural Gas Distribution Line
- City of Vidalia 8" Wastewater Force Main Line
- City of Vidalia 10" Wastewater Line
- 115kV Transmission Line
- NATURAL GAS
- State Highway

National Pipeline Mapping System

Major Road

Date: 7/2/2024
Project Number: 222270
Drawn By: BMS
Checked By: EEB

The lines shown are an approximate representation only and may have been offset for depiction purposes.



General Notes:
1. The information presented herein is for planning purposes only. Further detailed due diligence MUST be completed prior to making decisions regarding the site.
2. No attempt has been made by CSRS, Inc. to verify site boundary, title, actual legal ownership, deed restrictions, servitudes, easements, or other burdens on the property, other than that furnished by the client or his representative.
3. Transportation data from 2023 TIGER datasets via U.S. Census Bureau at <https://www.census.gov/geographies/mapping-files/time-series/geo/tiger-line-file.html>.
4. Aerial imagery is compiled from multiple different sources to create one cohesive image and may not reflect current ground condition.
5. Utility information from visual inspection and/or the individual utility operators. Exact field location has not been determined by survey. The lines shown are an approximate representation only and may have been offset for depiction purposes.