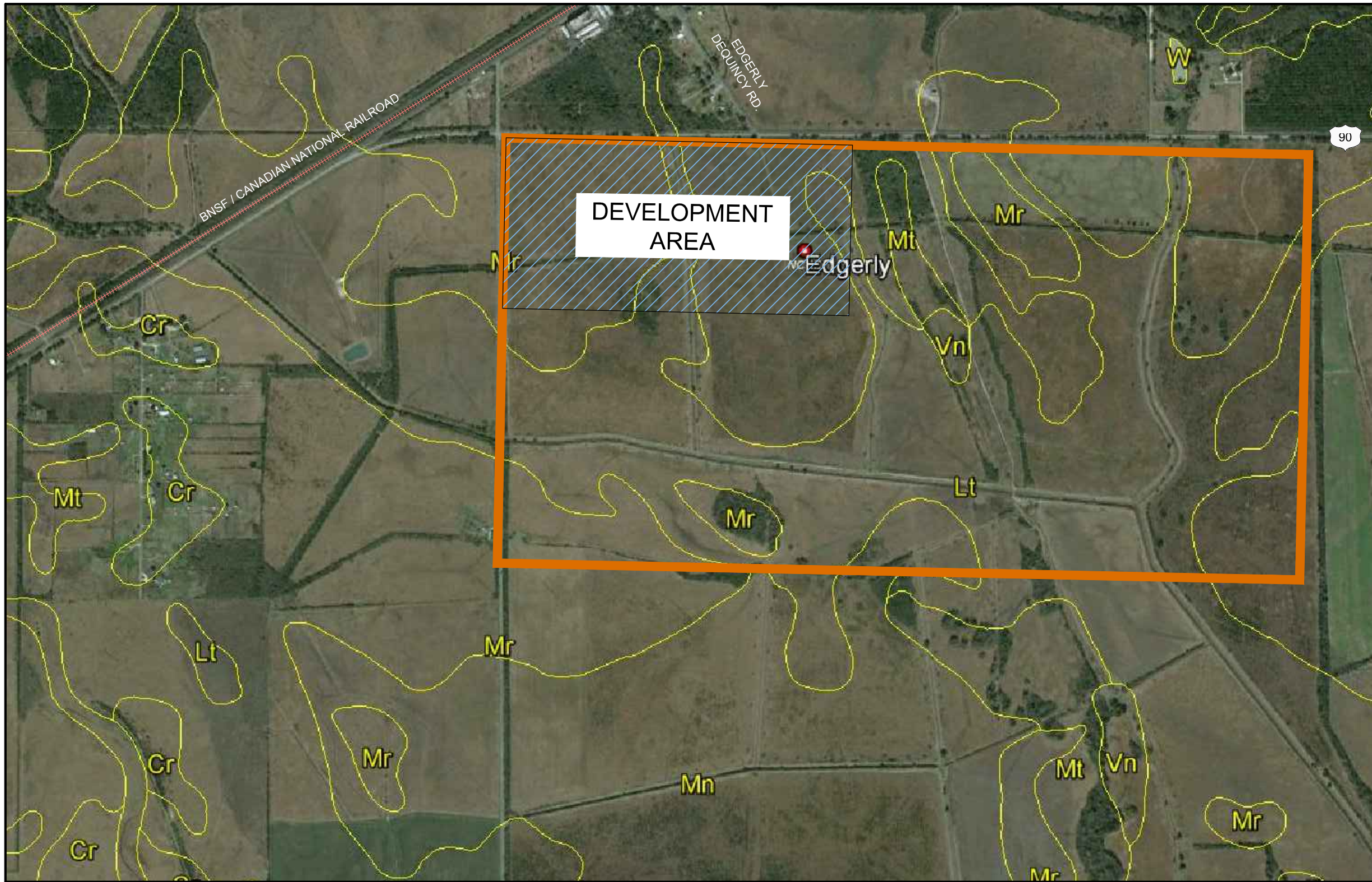
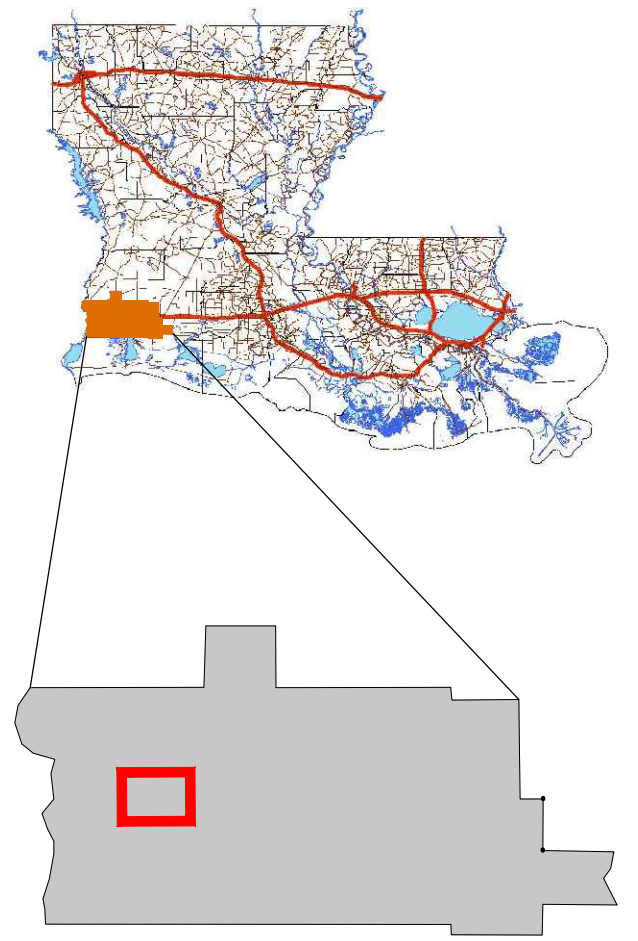




Exhibit O - Soils Conservation Service Map & Report



 Calcasieu Parish



Available Site Data

-  H.C. Drew Property (1,000 Acres)
-  Development Area (183 Acres)
- Mr - Edgerly Loam
- Mt - Mowata-Vidrine Complex
- Lt - Lenton Silt Loam
- Vn - Vidrine Silt Loam

Source:
 - Aerial Photo: 2014 Google Earth
 - NRCS Soils Database



GRAPHIC SCALE

(IN FEET)
 1 INCH = 1250 ft.



Map Unit Composition

Map units consist of 1 or more soil types, commonly referred to as "components".

Component Name	Geomorphic Position	Area Fraction	Component Type	Horizon Data
Soil Type 1 Edgerly	flats	82%	Major Soil Type	YES
Soil Type 2 Leton	flats	6%	Inclusion	Similar Data [2] *
Soil Type 3 Kaplan	drainageways	4%	Inclusion	None
Soil Type 4 Vidrine	ridges	3%	Inclusion	Similar Data [1] *
Soil Type 5 Midland	flats	2%	Inclusion	Similar Data [1] *
Soil Type 6 Crowley	depressions	2%	Inclusion	None
Soil Type 7 Mowata	ridges	1%	Inclusion	None
	flats			
	drainageways			

Note: links to horizon data marked with an * are approximate.

Map Unit Data [What is a Map Unit?](#)

Cartographic information about this map unit.

Map Unit Name:	<i>Edgerly loam, 0 to 1 percent slopes</i>
Map Unit Type:	Consociation
Map Unit Symbol:	<i>Mr</i>
Map Unit Area:	<i>acres (67484ac. total in survey area)</i>
	Raw Map Unit Data
	Raw Component Data (All Components)

Map Unit Aggregated Data

Generalized soils information within this map unit.

Farmland Class:	<i>All areas are prime farmland</i>
Available Water Storage (0-100cm):	<i>20 cm</i>
Max Flood Freq:	<i>Rare</i>
Drainage Class (Dominant Condition):	Poorly drained
Drainage Class (Wettest Component):	Poorly drained
Hydric Conditions:	<i>9</i>
[Annual] Min. Water Table Depth:	<i>61 cm</i>
[April-June] Min. Water Table Depth:	<i>61 cm</i>
Min Bedrock Depth:	<i>n/a</i>
	Raw Aggregated Map Unit Data

Associated Point Data

Links to any NSSL point data within this map unit.

1. Crowley (S1982LA019006)	[Lab Data] [Pedon Description]
2. Edgerly (S10LA0190048)	[Lab Data] [Pedon Description]



Map Unit Composition

Map units consist of 1 or more soil types, commonly referred to as "components".

Component Name	Geomorphic Position	Area Fraction	Component Type	Horizon Data
Soil Type 1 <i>Leton</i>	flats	90%	Major Soil Type	YES
Soil Type 2 <i>Unnamed</i>		10%	Inclusion	None

Note: links to horizon data marked with an * are approximate.

Map Unit Data [What is a Map Unit?](#)

Cartographic information about this map unit.

Map Unit Name:	<i>Leton silt loam</i>
Map Unit Type:	Consociation
Map Unit Symbol:	<i>Lt</i>
Map Unit Area:	<i>acres (40390ac. total in survey area)</i>
	Raw Map Unit Data
	Raw Component Data (All Components)

Map Unit Aggregated Data

Generalized soils information within this map unit.

Farmland Class:	<i>All areas are prime farmland</i>
Available Water Storage (0-100cm):	<i>18 cm</i>
Max Flood Freq:	<i>Rare</i>
Drainage Class (Dominant Condition):	Poorly drained
Drainage Class (Wettest Component):	Poorly drained
Hydric Conditions:	<i>90</i>
[Annual] Min. Water Table Depth:	<i>23 cm</i>
[April-June] Min. Water Table Depth:	<i>23 cm</i>
Min Bedrock Depth:	<i>n/a</i>
	Raw Aggregated Map Unit Data

Associated Point Data

Links to any NSSL point data within this map unit.

1. Leton (10LA019-047)	[Lab Data] [Pedon Description]
-------------------------------	--



Map Unit Composition

Map units consist of 1 or more soil types, commonly referred to as "components".

Component Name	Geomorphic Position	Area Fraction	Component Type	Horizon Data
Soil Type 1 Mowata	drainageways	60%	Major Soil Type	YES
Soil Type 2 Vidrine	flats	30%	Major Soil Type	YES
Soil Type 3 Crowley	terraces	3%	Inclusion	None
Soil Type 4 Leton	depressions	3%	Inclusion	Similar Data [2] *
Soil Type 5 Edgerly	flats	2%	Inclusion	Similar Data [1] *
Soil Type 6 Midland	terraces	2%	Inclusion	Similar Data [1] *

Note: links to horizon data marked with an * are approximate.

Map Unit Data [What is a Map Unit?](#)

Cartographic information about this map unit.

Map Unit Name:	<i>Mowata-Vidrine complex, 0 to 1 percent slopes</i>
Map Unit Type:	Complex
Map Unit Symbol:	<i>Mt</i>
Map Unit Area:	<i>acres (124467ac. total in survey area)</i>
	Raw Map Unit Data
	Raw Component Data (All Components)

Map Unit Aggregated Data

Generalized soils information within this map unit.

Farmland Class:	<i>All areas are prime farmland</i>
Available Water Storage (0-100cm):	<i>19.24 cm</i>
Max Flood Freq:	<i>Rare</i>
Drainage Class (Dominant Condition):	Poorly drained
Drainage Class (Wettest Component):	Poorly drained
Hydric Conditions:	<i>65</i>
[Annual] Min. Water Table Depth:	<i>31 cm</i>
[April-June] Min. Water Table Depth:	<i>31 cm</i>
Min Bedrock Depth:	<i>n/a</i>
	Raw Aggregated Map Unit Data

Associated Point Data

Links to any NSSL point data within this map unit.



Map Unit Composition

Map units consist of 1 or more soil types, commonly referred to as "components".

Component Name	Geomorphic Position	Area Fraction	Component Type	Horizon Data
Soil Type 1 Vidrine	flats	90%	Major Soil Type	YES
Soil Type 2 Crowley		5%	Inclusion	None
Soil Type 3 Leton	depressions	5%	Inclusion	Similar Data [2] *

Note: links to horizon data marked with an * are approximate.

Map Unit Data [What is a Map Unit?](#)

Cartographic information about this map unit.

Map Unit Name: *Vidrine silt loam, 1 to 3 percent slopes*

Map Unit Type: [Consociation](#)

Map Unit Symbol: *Vn*

Map Unit Area: *acres (2809ac. total in survey area)*

[Raw Map Unit Data](#)

[Raw Component Data \(All Components\)](#)

Map Unit Aggregated Data

Generalized soils information within this map unit.

Farmland Class: *Not prime farmland*

Available Water Storage (0-100cm): *20.23 cm*

Max Flood Freq: *None*

Drainage Class (Dominant Condition): [Somewhat poorly drained](#)

Drainage Class (Wettest Component): [Somewhat poorly drained](#)

Hydric Conditions: *5*

[Annual] Min. Water Table Depth: *46 cm*

[April-June] Min. Water Table Depth: *46 cm*

Min Bedrock Depth: *n/a*

[Raw Aggregated Map Unit Data](#)

Associated Point Data

Links to any NSSL point data within this map unit.