

Exhibit 7

Boundary Survey



City of Natchitoches
Highway 478 Development Tract

SURVEY FOR GEORGE SMALLWOOD
IN SECTION 20, T8N-R7W
NATCHITOCHE PARISH, LOUISIANA

MAP 0210675.00
Pg 458A

DATE: MAY 31, 1998

SURVEYED BY:



R.E.L. Breedlove, Jr.
R.E.L. BREEDLOVE, JR.
PROFESSIONAL LAND SURVEYOR
REG. NO. 4510

8:27 22 11 00 AM '98
R. Williams
H. Williams
C. Williams

I HEREBY CERTIFY THAT I HAVE MADE THE SURVEY SHOWN HEREON BY HEAVY LINES AND THAT THIS PLAT IS A TRUE AND CORRECT REPRESENTATION THEREOF.

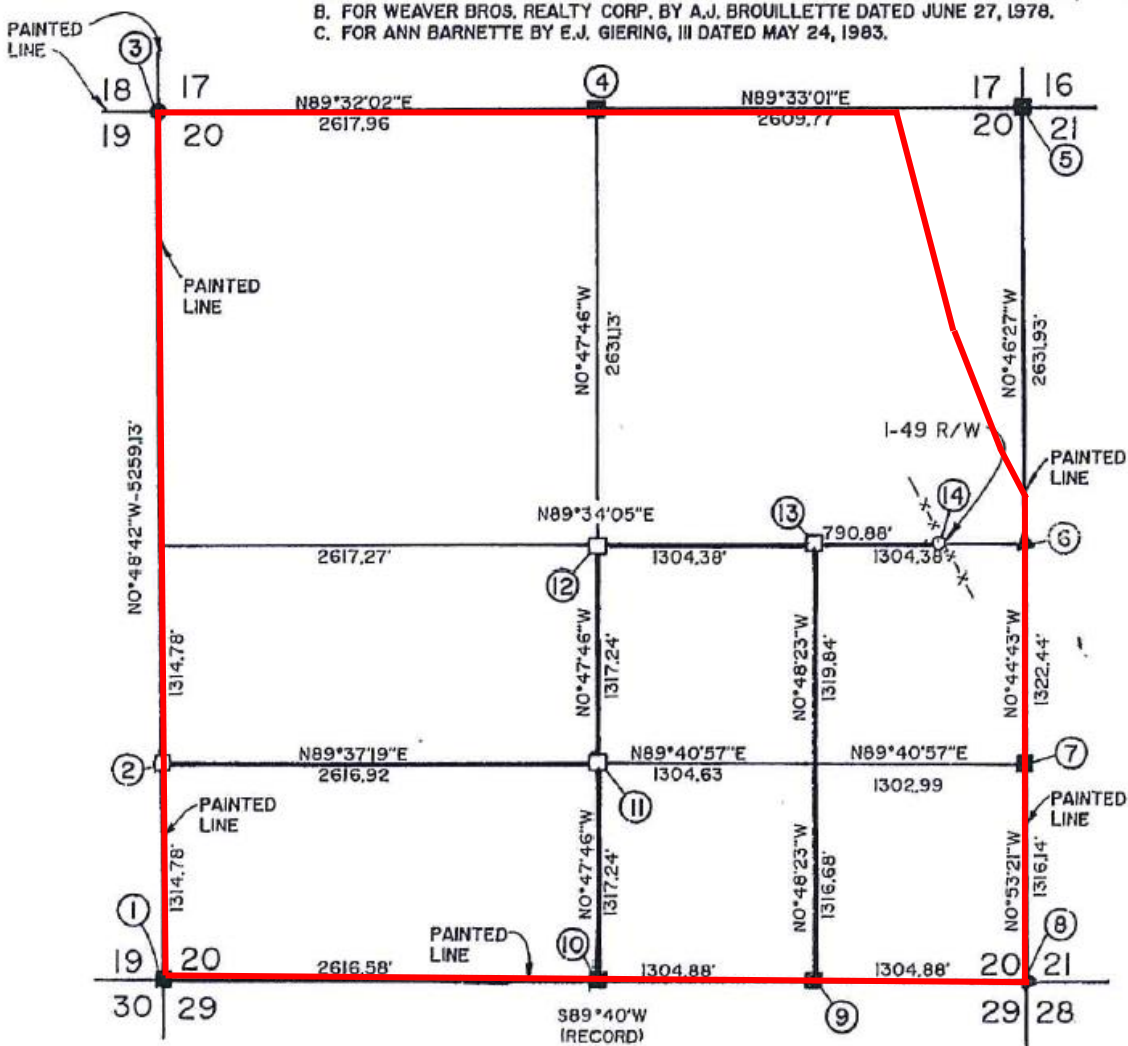
NOTES

1. ● = FOUND IRON PIPE
2. ■ = FOUND CONCRETE POST
3. ▲ = FOUND ANGLE IRON
4. □ = SET CONCRETE POST
5. ○ = SET IRON PIPE

6. I CERTIFY THAT THIS PLAT REPRESENTS AN ACTUAL GROUND SURVEY AND THAT NO ENCROACHMENTS EXIST EXCEPT AS SHOWN ON THIS PLAT. THIS PLAT IS IN ACCORDANCE WITH THE APPLICABLE STANDARDS OF PRACTICE BASED ON THE CURRENT CLASS "C" SURVEY CLASSIFICATION.

7. REFERENCE SURVEYS:

- A. FOR NATCHITOCHE PARISH SCHOOL BOARD BY A.J. BROUILLETTE DATED JAN. 24, 1964.
- B. FOR WEAVER BROS. REALTY CORP. BY A.J. BROUILLETTE DATED JUNE 27, 1978.
- C. FOR ANN BARNETTE BY E.J. GIERING, III DATED MAY 24, 1983.



WITNESS TREES

① FND. MKD.: 18" PINE N28°W-9.9'
10" PINE S45°E-4.6'

② MKD.: 10" PINE S64°E-15.4'
14" PINE N65°30'E-22.2'

③ FND. MKD.: 10" PINE S48°45'E-4.0'
14" ASH S7°45'W-12.3'

④ MKD.: 24" PINE S64°E-17.9'
14" PINE N62°30'E-11.5'
16" PINE N31°W-16.2'

⑤ FND. MKD.: 10" PINE S5°E-26.7'

⑧ FND. MKD.: 8" PINE N36°W-3.3'
8" PINE S2°W-9.2'
8" PINE S88°W-17.2'

⑨ MKD.: 8" RED OAK N32°E-26.6'
12" PINE S23°E-12.1'

⑩ MKD.: 12" PINE N48°30'E-10.2'
6" PINE N79°30'W-9.0'

⑪ MKD.: 6" PINE N15°30'E-9.8'
6" PINE N62°30'W-5.5'

⑫ MKD.: 14" POST OAK N69°W-29.8'
6" PINE N38°E-10.8'

⑬ MKD.: 14" PINE S81°W-13.2'
6" POST OAK N62°E-13.6'