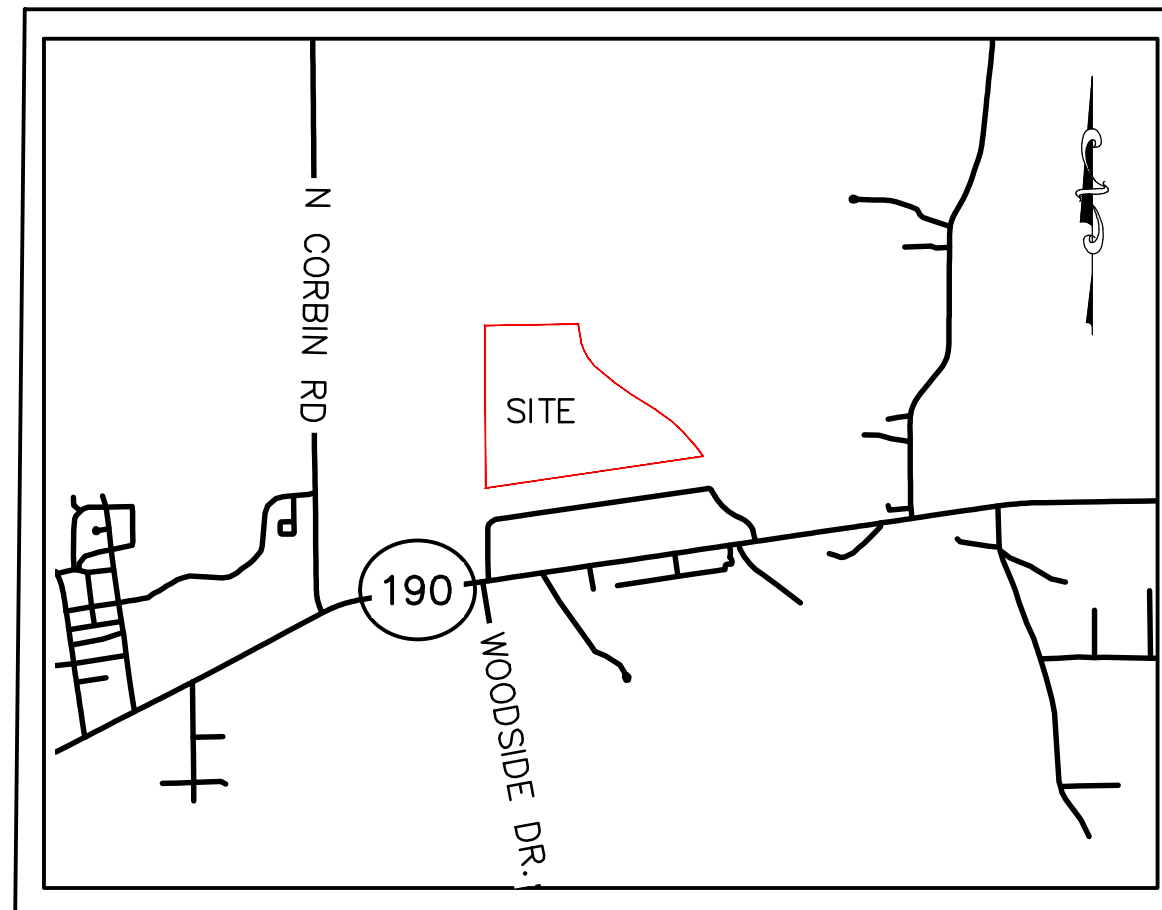


Exhibit F. Hornsby Industrial Park Property Boundary Exhibit



Hornsby Industrial Park Property Boundary Exhibit



VICINITY MAP
 SCALE: 1"=3000'

WEYERHAEUSER REAL ESTATE
 DEVELOPMENT COMPANY (WREDCO)

WEYERHAEUSER COMPANY

TOWNSHIP 6 SOUTH
 RANGE 4 EAST

SITE

MINERAL PRESERVATION L.L.C

STAFFORD, HERSELL E
 (NOW OR FORMERLY)

STAFFORD, JASON & SHIRLEY
 (NOW OR FORMERLY)

STAFFORD, KENNETH O & DIANNE B
 (NOW OR FORMERLY)

STAFFORD, DONALD R ET ALS
 (NOW OR FORMERLY)

LIVINGSTON ECONOMIC
 DEVELOPMENT COUNCIL, INC. (NOW
 OR FORMERLY)

AMERICAN WASTE AND
 POLLUTION CONTROL
 (NOW OR FORMERLY)

CB&I WALKER LA, LLC
 (NOW OR FORMERLY)

INDUSTRIAL DRIVE

SECTION 20
 SECTION 29

SECTION 21
 SECTION 28

N89°21'51"E
 1458.98'

S8°50'36"E
 305.08'

R=924.45' L=400.53'
 Chd.=S30°25'10"E C.L.=397.40'
 Delta=24°49'26"

S49°39'53"E
 382.05'

S54°24'30"E
 315.52'

S57°55'37"E
 503.22'

S53°46'30"E
 310.71'

S46°07'00"E
 240.96'

S40°41'27"E
 316.07'

R=960.52' L=159.98'
 Chd.=S36°59'26"E C.L.=159.79'
 Delta=9°32'34"

S81°39'11"W
 3432.72'

N07°5'25"W
 2542.36'

P:\212161\Sites Under Contract\021 - Hornsby Industrial Park\CAD\015_templates\CAD\Site Boundary.dwg Apr 26, 2018 - 1:48pm

GENERAL NOTES:

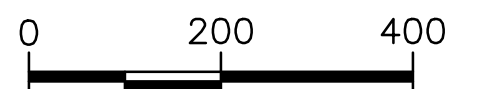
- No attempt has been made by CSRS, Inc. to verify title, actual legal ownership, deed restrictions, servitudes, easements, or other burdens on the property, other than that furnished by the client or his representative.
- Depicted exhibit based on "Map Showing Survey & Division of a 475.924 Acre Tract into JS-1 & JS-2 Located in Section 17, 20 and 21, T 6 S-R 4 E, Greensburg Land District, Livingston Parish, Louisiana for Joel Sanders" by McLin and Associates Inc. dated December 12, 2011.
- This is not a property boundary survey and is not intended to meet the Louisiana standards of practice for property boundary surveys. Bearings and distances of tracts were obtained from document referenced above.
- The coordinate system used is NAD83 Louisiana State Plane South (US feet). Coordinates were derived by overlaying the boundary on an aerial photograph and are within 100' of true location.
- Rights of Way, Easements, and Servitudes shown hereon have not been verified in the field and any shown are for general locative information only.

Project:

**Hornsby Industrial Park
 Livingston Parish, Louisiana**

Client:

BRAC



Revisions:

#	Date	Description

Key Plan:

LEGEND

— SITE BOUNDARY
 (127.25 AC.)

Sheet Title:

**Property Boundary
 Exhibit**

Date: JANUARY 2018

Project Number: 212161

Drawn By: TMK

Checked By: TMG

Sheet: