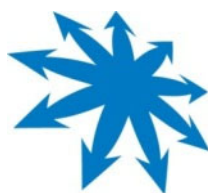


# Exhibit N.

## Syngenta Site

### Electrical Distribution Infrastructure Map



Baton Rouge Area Chamber®



# Syngenta Site Electrical Distribution Infrastructure Map

Syngenta Site  
Iberville Parish, LA

BRAC



Iberville Parish

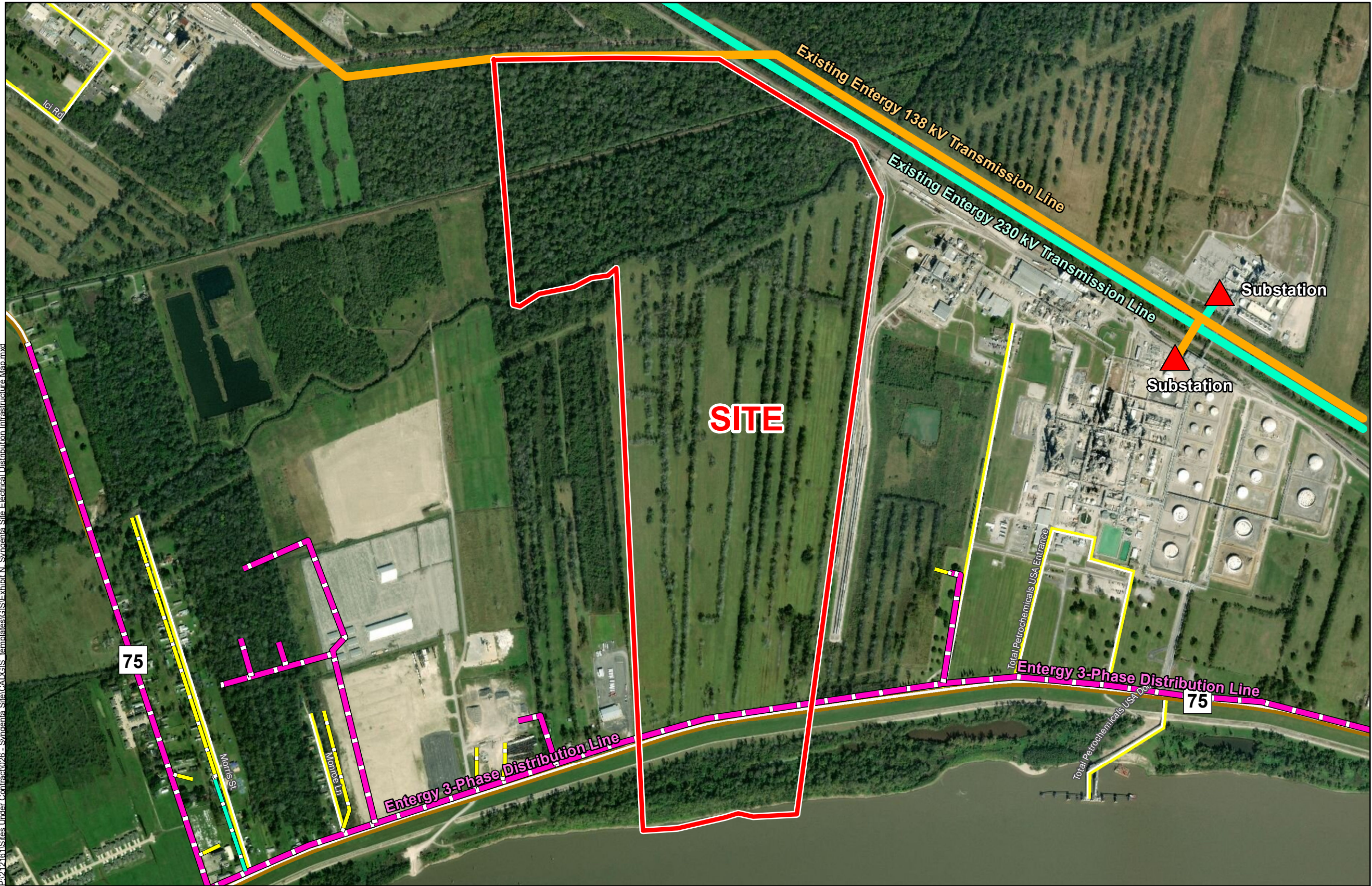
## LEGEND

- Site Boundary (358.77 Ac. ±)
- Existing Entergy Two Phase Electrical Line
- Existing Entergy Single Phase Electrical Line
- Existing Entergy Three Phase Electrical Line
- Existing Entergy 138 kV Transmission Line
- Existing Entergy 230 kV Transmission Line
- Substation
- Existing Roadway
  - Rural State Highway
  - Local Roads



Date: 5/13/2020  
Project Number: 212161  
Drawn By: BNF  
Checked By: EEB

CSRS



General Notes:  
1. No attempt has been made by CSRS, Inc. to verify site boundary, title, actual legal ownership, deed restrictions, servitudes, easements, or other burdens on the property, other than that furnished by the client or his representative.  
2. Transportation data from 2013 TIGER datasets via U.S. Census Bureau at <http://ftp2.census.gov/geo/tiger/TIGER2013>.  
3. Utility information from visual inspection and/or the individual utility operators. Exact field location has not been determined by survey. The lines shown are an approximate representation only and may have been offset for depiction purposes.  
4. 2015 aerial imagery from USDA-APFO National Agricultural Inventory Project (NAIP) and may not reflect current ground conditions.

